

F-Class Gen V Retrofit Kit

Installation Instructions



STEP 1

Turn off Power.

STEP 2

Remove existing reflector and disconnect whip from junction box.

STEP 3

Attach Vantage junction box power lead to power existing junction box.

STEP 4

Attach Vantage Retrofit Junction Box to existing Frame.

STEP 5

Insert heat sink through existing hole in the ceiling.

STEP 6

Attach Vantage clips to frame, use the clips shaped like an L on horizontal frames with the long legs on the pan or the clips shaped like a U on a vertical flange with the long sides on the inside of the flange.

STEP 7

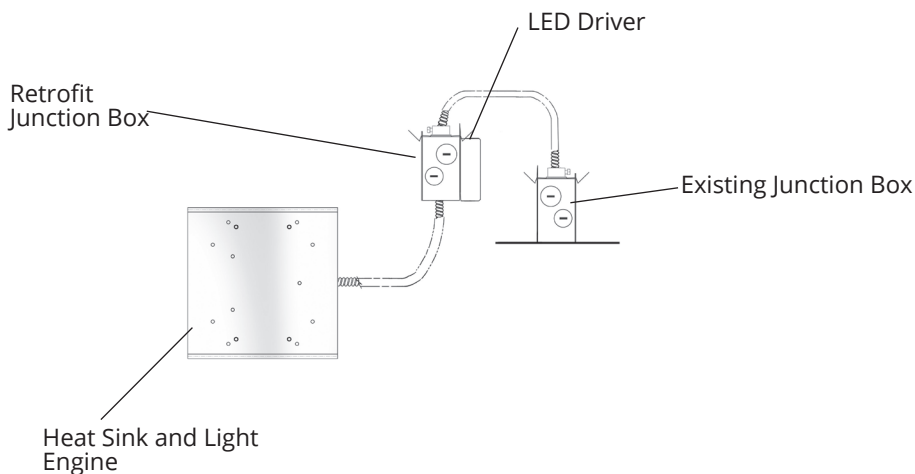
Attach reflector with screws through key slots in the reflector to the light engine housing.

STEP 8

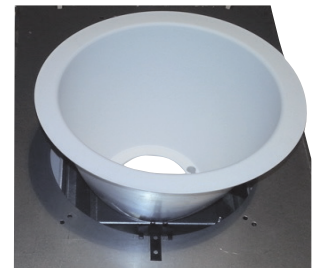
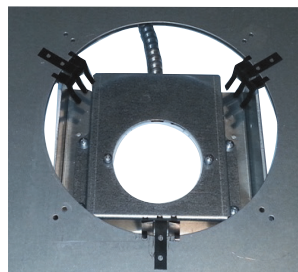
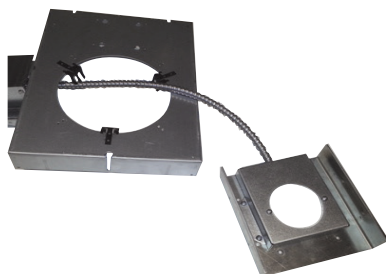
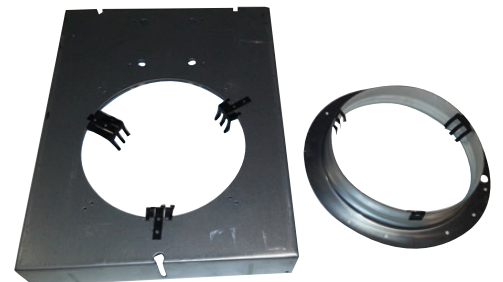
Install reflector up into frame.

STEP 9

Energize.



F-CLASS GEN V RETROFIT KIT CONTENTS



Vantage reserves the right to change components, finishes or design details in any manner which does not alter the installed appearance or reduce performance and intended function.