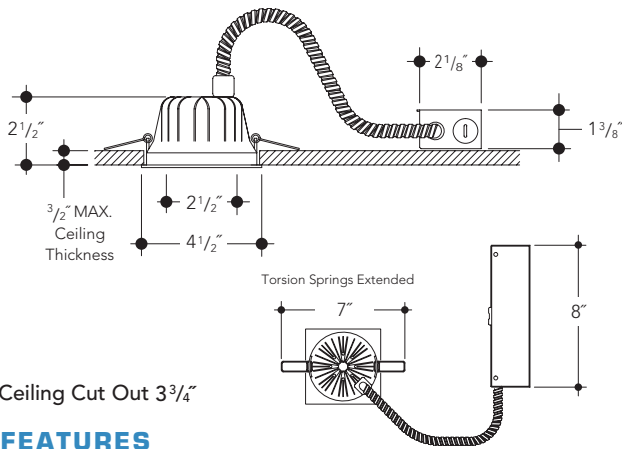


## DIMENSIONS



Ceiling Cut Out 3 3/4"

## FEATURES

### LED Array

LED downlighting is available in 700, 1300 and 2000 lumens. An attractive beveled trim with a deeply regressed, lightly frosted polycarbonate lens produces a wide distribution with excellent visual cutoff. Standard finish is painted matte white or black finish. Other colors available. Standard non-dimming driver with optional dimming drivers with the ability to interface with 0-10V or Triac lighting control systems provide additional light level control.

### Benefits

- Light engine with three step MacAdam Ellipse binning for excellent color consistency.
- Standard 80 CRI (minimum) with optional 95 CRI (minimum) for color critical applications.
- Highly energy efficient lighting solution with up to 100 lumens per watt.
- Driver housed within approved splice compartment and is thermally protected.
- All drivers include integrated surge protection.
- Optional 0-10V dimming drivers in two varieties, down to 10% or 1% of lumen output.
- Optional Triac dimming driver with dimming to 20% of lumen output
- Long Life. Minimum L<sub>70</sub> of 50,000 hours.
- 5 year warranty on LED module and driver.

### Housing

Polyester powder coat painted heavy gauge cold roll steel housing with integrated flange and stainless steel spring torsion retaining ears. Luminaire is pre-wired and grounded to driver housing/junction box with easy access from below. Driver/junction box is listed for through branch circuit wiring. Integrated forged aluminum heat sink promotes rapid heat dissipation, extending LED life.

Optional New Construction Frame provides positive location for ease of installation in a variety of ceiling materials. Includes integrated bar hangers which feature rigid form cross sections and include joist position tabs, integral nails, auxiliary nail holes, T-Bar slots and holes for locking to grid using self-tapping screws (by others).

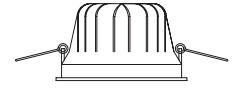
Non-IC construction. Insulation must be kept 3" away from luminaire.

## REFLECTOR KIT

### LENSED - LED - SQUARE

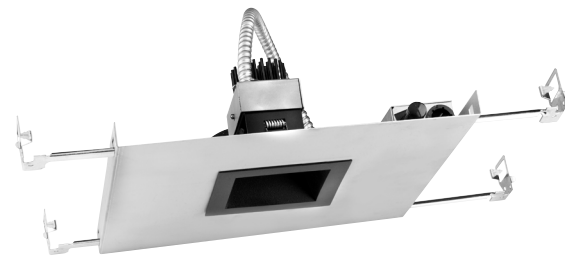
LED 4" Aperture

CSQ4411FR Beveled, square reflector, painted matte finish with deeply recessed, lightly frosted polycarbonate lens.



### Reflector Finish Options

- WHT White Reflector  
*White Flange is Standard*
- BLK Black Reflector



Typical C Class Square with New Construction Frame



Manufactured and Listed to UL 1598, ETL and CSA standards. Suitable for Damp Locations. Wet location under covered ceiling.



## ORDERING INFORMATION

EXAMPLE: SQ44LEDEC1-0727K-CSQ4411FR-BLK-HCR

Wattage LED	Housing	Voltage	Lumens	Kelvin	Reflector	Finish	Options
See Chart	SQ44LEDEC	1	-07 = 700	27K = 2700K	CSQ4411FR	WHT	EM
Below		2	-13 = 1300	30K = 3000K		BLK	HCR
			-20 = 2000	35K = 3500K			NCF
				40K = 4000K			SDM
							TDM
							ZDM

Lumens	Wattage*
700-3k	7.7
700-4k	7
1300-3k	14.4
1300-4k	13.5
2000-3k	22.2
2000-4k	21

\*Actual Wattage/Lumens may vary.

Voltage  
1 - 120 Volts  
2 - 277 Volts

Reflector Color Options  
WHT - White  
BLK - Black

Options  
EM - Emergency Battery  
HCR - 95 CRI (minimum)  
NCF - New Construction Frame  
SDM - 0-10V Dimming to 10%  
TDM - Triac Dimming Driver  
ZDM - 0-10V Dimming to 1%

Vantage reserves the right to change components, finishes or design details in any manner which does not alter the installed appearance or reduce performance and intended function.

▲ See Options pages for other options and finishes.