

Part #	Prepared By
Project	Notes
Type	
Date	

4" DecoLine® Cylinder

Regressed Lens, LED Cylinder, 700-2000 Lumens



DESCRIPTION

DecoLine® architectural LED cylinders can be personalized with 25 standard interchangeable finish options. Mounting options include Surface Mount, Pendant Mount, Cord Mount, Cord & Cable Mount and Wall Mount. Available with Narrow, Medium, Wide or Extra Wide optical distributions, DecoLine® cylinders are designed for general, accent and task lighting applications. Multiple dimming driver options are available for your specific design needs.

FEATURES

- 25 interchangeable finish options
- Additional Specular Clear & Soft Glow Clear Reflector finish options
- 3-Stage Beamshaper® optic to provide precise beam control & soft luminance
- 4 distribution options: Narrow, Medium, Wide & Extra Wide
- Surface, Wall, Pendant, Cord and Cord & Cable Mounting options
- 700, 1300 and 2000 Lumen Packages
- 2700K, 3000K, 3500K, 4000K & Dim-to-Warm (3000K-1800K) CCT options
- 80+ CRI Standard, 90+ CRI Option
- 3-Step SDCM
- Standard 0-10V 1% dimming driver (located in luminaire)
- Optional 0-10V 0.1%, Triac, Dali, DMX with RDM and Lutron dimming drivers (located in canopy)

LISTINGS

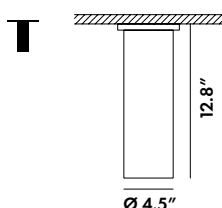
- ETL certified to UL 1598 and UL8750 requirements
- Tested according to LM-79 and LM-80 standards
- Suitable for damp locations; Wet location under covered ceiling
- Buy American Act

WARRANTY & NOTES

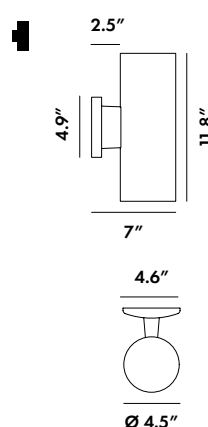
- 5-year limited warranty on LED module and driver
- www.vantageltg.com/product-warranty
- Photometric tests performed by an accredited NVLP facility and in accordance to IESNA LM-79-2008 testing procedures

MOUNTING SOLUTIONS

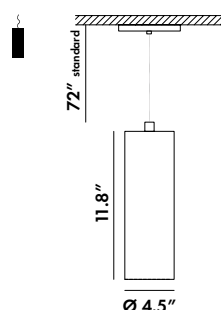
SM - SURFACE MOUNT



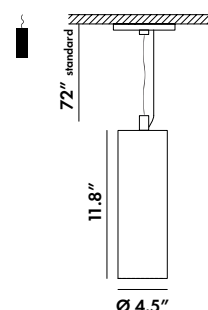
WM - WALL MOUNT



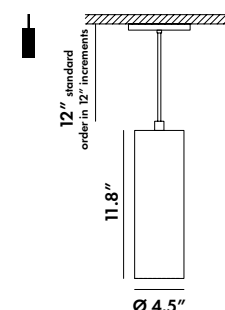
CM - CORD MOUNT



CCK - CORD & CABLE MOUNT



PM - PENDANT MOUNT



MOUNTING NOTES

PM - 1/4" IP x 12" rigid stem with fixed canopy (standard). Swivel canopy (PM-SWC) available to accommodate sloped ceilings up to 45°.

Standard Pendant lengths (stem): 12", 24", and 36". If a different length is desired, please specify in 12" increments and add a field cut kit to the order.

CM - 72" 5 conductor cord to support 0-10V dimming (standard). Other lengths available.

Optional Drivers - Require larger canopy, see canopy details for more information.

4" DecoLine® Cylinder

Regressed Lens, LED Cylinder, 700-2000 Lumens

DecoLine®
CYLINDERS

ORDERING INFORMATION

EXAMPLE: VDL412CMU-3035K-NW-HBL-BLK-BLK-DTD-PM(24)

			-			-			-			-			-			-		
1	2	3		4	5		6	7		8	9		10		11		12			

Additional Notes

1	2	3	4	5	6
Size	Mounting Option	Voltage	Lumens	Kelvin	Beamshaper®
VDL412 - 4"x12"	SM - Surface Mount WM - Wall Mount CCK - Cord & Cable Mount PM - Pendant Mount	U - Universal (120 - 277V) 1 - 120V 2 - 277V *Must provide voltage when optional drivers are selected.	07 - 700 13 - 1300 20 - 2000	27K - 2700 Kelvin 30K - 3000 Kelvin 35K - 3500 Kelvin 40K - 4000 Kelvin DTW - Dim-to-Warm* (3000 - 1800 Kelvin)	NW - Narrow 15° MD - Medium 30° WE - Wide 45° XW - Extra Wide 72°
7	8	9	10		
Reflector Finish	Housing Finish	Cord/Stem Finish	Canopy Finish		
ACR BA BLB BLK BLS BRD BVT BZ CS DEU HBL MCL PBK PCL	PVT RBE RVT SOR SPK SSG TPG TRQ WHC WHG WHT SCL SGC CC-RAL()*	ACR BA BLB BLK BLS BRD BVT BZ CS DEU HBL MCL	PCL PVT RBE RVT SOR SPK SSG TPG TRQ WHC WHG WHT CC-RAL()*		
11	12				
Driver Options*	Additional Options**				
DTD TDM DDM DMX DL-2 LDE1 PEQ0 LDE5	HCR REM PM-() CM-() CCK-() PM-SWC DCA				

ORDERING NOTES

DTW - Dim-to-Warm (3000 - 1800 Kelvin), Not available above 2000 lumens, Requires larger canopy

Cord Finish - Cord finish options only available in CBLK, CGRY, CWHT

CC-RAL() - Must supply RAL number when submitting order, custom color charge applies

Color Swatches - See P.5 for color swatches

*DRIVER OPTIONS NOTES

Optional Drivers - Require larger canopy, see canopy details for more information

DTD - 0-10V 0.1% dimming driver.

TDM - Triac (Forward Phase, 120V only) dimming driver.

DDM - Dali dimming driver.

DMX - DMX with RDM dimming driver. Must Include Daisy Chain Adaptor.

DL-2 - Lutron 2-Wire Hi-Lume dimming driver.

DL-3 - Lutron 3-Wire Hi-Lume dimming driver.

LDE1 - Lutron Hi-Lume 1% with Soft-On, Fade-to-Black dimming driver

LDE5 - Lutron 5-Series 5% dimming driver.

PEQ0 - Lutron Hi-Lume Premier 0.1% with Soft-On, Fade-to-Black dimming driver.

**ADDITIONAL OPTIONS NOTES

HCR - 90+ CRI min.

REM - Remote Emergency Battery Backup

CM-() - Specify length of Cord Mount

CCK-() - Specify length of Cord & Cable Mount

PM-() - Specify length of Pendant Mount

PM-SWC - Swivel Canopy 1/4" IP x12" rigid stem with swivel canopy for mounting on sloped ceilings up to 45°

DCA - DMX Daisy Chain Adaptor

LUMENS

Nominal Lumens	Delivered Lumens	Wattage	Lumens Per Watt
700	650	7.28	89.29
1300	1202	13.52	89.29
2000	1857	20.8	89.29

All measured at 3500K with a standard medium distribution

*Actual Wattage/Lumens may vary.

DecoLine® is a registered trademark of Lexington Lighting Group, LLC dba Vantage Lighting

Vantage reserves the right to change components, finishes or design details in any manner which does not alter the installed appearance or reduce performance and intended function.

4" DecoLine® Cylinder

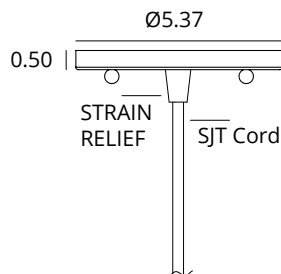
Regressed Lens, LED Cylinder, 700-2000 Lumens

DecoLine®
CYLINDERS

CANOPY DETAILS

CM

Cord Mount, fixed canopy (standard)

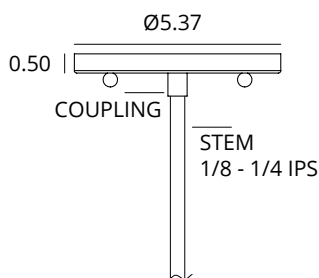


Driver Compatibility

Standard 0-10V 1%

PM

Pendant Mount, rigid stem, fixed canopy (standard)

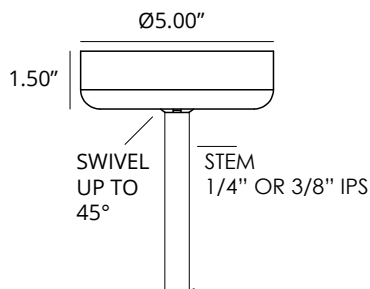


Driver Compatibility

Standard 0-10V 1%

PM-SWC

Pendant Mount, rigid stem, swivel canopy, up to 45° slope ceiling (optional)

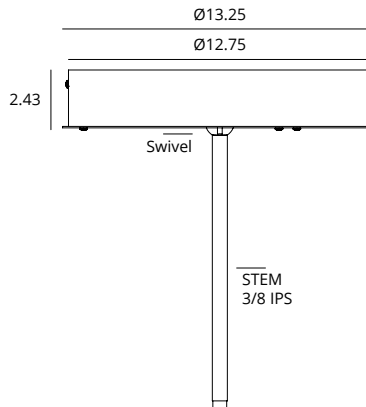


Driver Compatibility

Standard 0-10V 1%

OPTIONAL DRIVERS

Canopy for larger driver options. Driver located in canopy.



Driver Compatibility

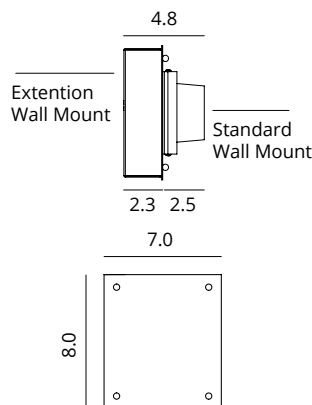
DTD
TDM
DDM
DMX
DL-2
LDE1
PEQ0
LDE5

DTW - Dim-to-Warm

Available as
CM, CCK, PM-RGC & PM-SWC

WALL MOUNT EXTENSION

Wall Mount Extension for larger optional drivers



Driver Compatibility

DTD
TDM
DDM
DMX
DL-2
LDE1
PEQ0
LDE5

DTW - Dim-to-Warm

4" DecoLine® Cylinder

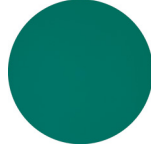
Regressed Lens, LED Cylinder, 700-2000 Lumens

DecoLine®
CYLINDERS

25 STANDARD FINISHES



RBE - ROBIN EGG



TRQ - TURQUOISE



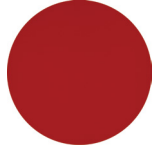
DEU - DARK EUCALYPTUS



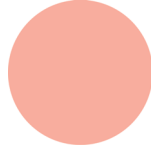
HBL - HYDRANGEA BLUE



BLB - BLUE BIRD



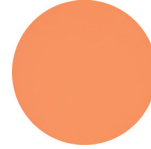
BRD - BORDEAUX RED



PCL - PINK CORAL



SPK - SUBTLE PINK



SOR - SALMON ORANGE



SSG - SUNSET ORANGE



RVT - RED VELVET



PVT - PURPLE VELVET



BVT - BLUE VELVET



WHC - WHITE CRYSTAL



WHT - WHITE MATTE



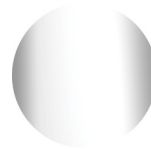
WHG - WHITE HIGH GLOSS



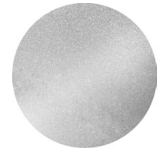
TGD - TRANSLUCENT GOLD



BA - BRUSHED ALUMINUM



ACR - ANTIQUE CHROME



CS - MIRROR SILVER SPARKLE



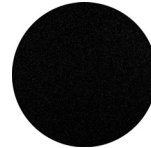
MCL - METALLIC CHARCOAL



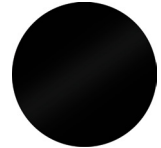
BZ - BRONZE



BLS - BLACK SCALE

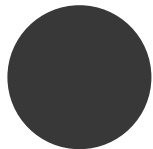


BLK - BLACK MATTE

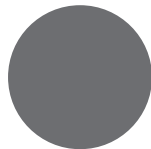


PBK - PIANO BLACK

CORD ONLY FINISHES



CBLK - BLACK CORD

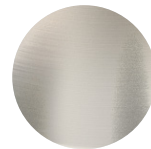


CGRY - GREY CORD



CWHT - WHITE CORD

REFLECTOR ONLY FINISHES



SCL - SPECULAR CLEAR



SGC - SOFT GLOW CLEAR

NOTES

DecoLine® is a registered trademark of Lexington Lighting Group, LLC dba Vantage Lighting
Vantage reserves the right to change components, finishes or design details in any manner which does not alter the installed appearance or reduce performance and intended function.