

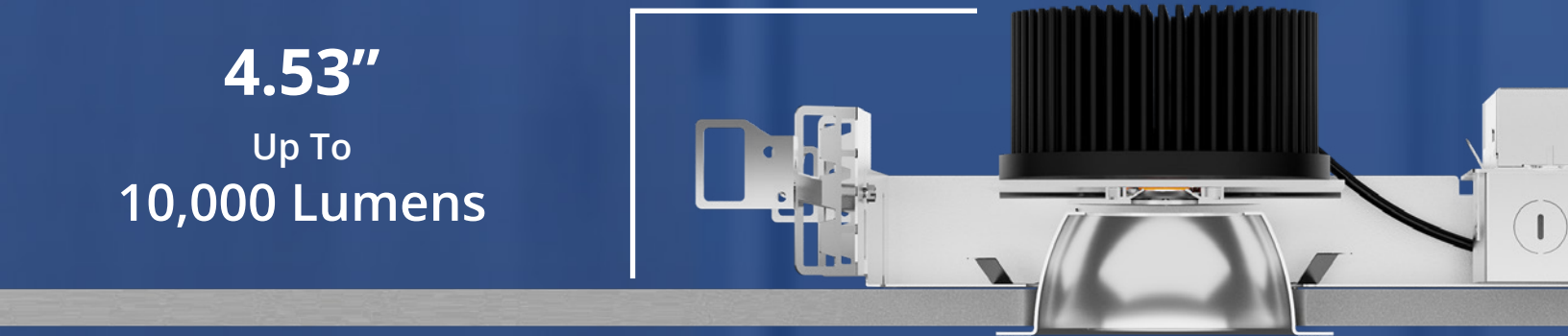
Shallow Housing

Downlight Collection



2.43"

Up To
3,000 Lumens



4.53"

Up To
10,000 Lumens

60

Shallow Housings

Buy American Act Compliant
Made in Rhode Island, USA



Extreme Shallow
Under **2.5"** above ceiling
Up to **3,000 Lumens**
With 5/8" ceiling thickness



Shallow
Under **4"** above ceiling
Up to **5,000 Lumens**
With 5/8" ceiling thickness



HiLumen Shallow
Under **7"** above ceiling
Up to **15,000 Lumens**
With 5/8" ceiling thickness

Shallow Housing Downlight Families



Capela Series
Architectural-Grade



P. 3



F-Class Gen V
Architectural-Grade



P. 3-4



F-Class HiLumen
Architectural-Grade



P. 5



vHealth Lighting
Architectural-Grade



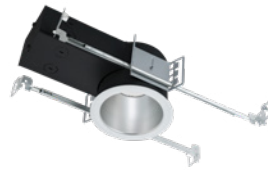
P. 6



C-Class
Commercial-Grade



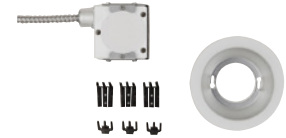
P. 7



F-Class Commercial
Commercial-Grade



P. 7



Retrofit & Remodeler Kits
Commercial-Grade



P. 8

LEGEND

Product Icons

ES Extreme Shallow
Under 2.5" above ceiling
Up to 3,000 Lumens
With 5/8" ceiling thickness

BIO SYNC BioSync® Tunable White

Tunable WHITE Tunable White Color

Dim-to-Warm Dim-To-Warm

SH Shallow
Under 4" above ceiling
Up to 5,000 Lumens
With 5/8" ceiling thickness

ENERGY STAR Energy Star Certified

v Velocity Quick-Ship

Heart Designed For Healthcare

HS HiLumen Shallow
Under 7" above ceiling
Up to 15,000 Lumens
With 5/8" ceiling thickness

Buy American Act Compliant Buy American Act Compliant
Made in Rhode Island, USA

Driver & Additional Options

TDM/TDMHL - Triac (Forward Phase, 120V only) dimming driver

XDM - 0-10V 0.1% dimming driver

ZDM/ZDMHL - 0-10V 1% dimming driver

SDM - 0-10V 10% dimming driver

DTD - 0-10V 0.1% dimming driver, Dim-to-Dark

DL-2 - Lutron 2-Wire Hi-lume dimming driver

DL-3 - Lutron 1% 3-Wire Hi-lume dimming driver

LDE1 - Lutron Hi-lume 1% with Soft-On, Fade-to-Black dimming driver

PEQ0 - Lutron Hi-lume Premier 0.1% with Soft-On, Fade-to-Black dimming driver.

PSQ0 - Lutron Eco-system Tunable White Driver 0.1%

VEMI-2 - 2-Port EMI Filter

VEMI-4 - 4-Port EMI Filter

HCR - High CRI, 90+ minimum

PF - Polished Flange

EM17 - Emergency battery back-Up. Remote test button & indicator light

EM117 - Emergency battery back-Up. Integrated test button & indicator light

EM20 - Emergency battery back-Up. Remote test button & indicator light

EM120 - Emergency battery back-Up. Integrated test button & indicator light

REM - Remote emergency battery back-up

EM - Emergency battery back-up

GR-X-XX - Goof Ring for X" RMD/RET

RMDL - Remodel housing with spring clips

NCFQA - New construction pan with Quick Connect system

DTW - Dim-to-warm 1800K-3000K, 90CRI, 0-10V

TWC - Tunable white color 2700K-6500K, 90CRI, 0-10V

TWW - Warm Tunable White Color 1800K-4000K, 90CRI, 0-10V

BSC - BioSync® Tunable White 2700K-6500K, 90CRI, 0-10V

BSW - BioSync® Warm Tunable White Color 1800K-4000K, 90CRI, 0-10V

ARCHITECTURAL-GRADE



CAPELA® SERIES - Shallow, under 4"

Find full offering of Capela® Series on vantageltg.com
See specsheet for full product details

| Shape | Size | Housing | Min. Height Above 5/8" Ceiling | Reflector Type | Voltage | Lumen | Kelvin | Distribution | Driver Options | Additional Options |
|---------------------|------|----------|-----------------------------------|------------------------------|--|-----------|----------------------------|--------------------------------------|--|--------------------|
| Non IC-RATED | | | | | | | | | | |
| Round | 2" | V2COR | 3.325" | Open | Universal V, 120V, 277V, 347V | 700, 1300 | 27K, 30K, 35K, 40K, DTW | Narrow 15° Medium 30° Wide 45° | TDM, XDM, ZDM, DL-2, DL-3, LDE1, PEQ0 | EM, HCR |
| | | V2CORM | 3.991" | Open Micro-Flange | | | | | | |
| | | V2CER | 3.325" | Flush Lensed | | | | | | |
| | | V2CERM | 3.991" | Flush Lensed Micro-Flange | | | | | | |
| | | V2CRR | 3.764" | Regressed Lens | | | | | | |
| Square | 2" | V2CRS | 3.689" | Flush Lensed | | | | | | |
| Round | 3" | V3CRRADJ | 3.772" | Adjustable Regressed Lens | | | | | | |
| | | V3CRR | 3.565" | Regressed Lens | | | | | | |
| Square | 3" | V3CRSADJ | 3.649" | Adjustable Regressed Lens | | | | | | |
| | | V3CRS | 3.4" | Flush Lensed | | | | | | |
| | | V3CRSM | 3.394" | Flush Lensed Micro-Flange | | | | | | |



A4VOFLEDES



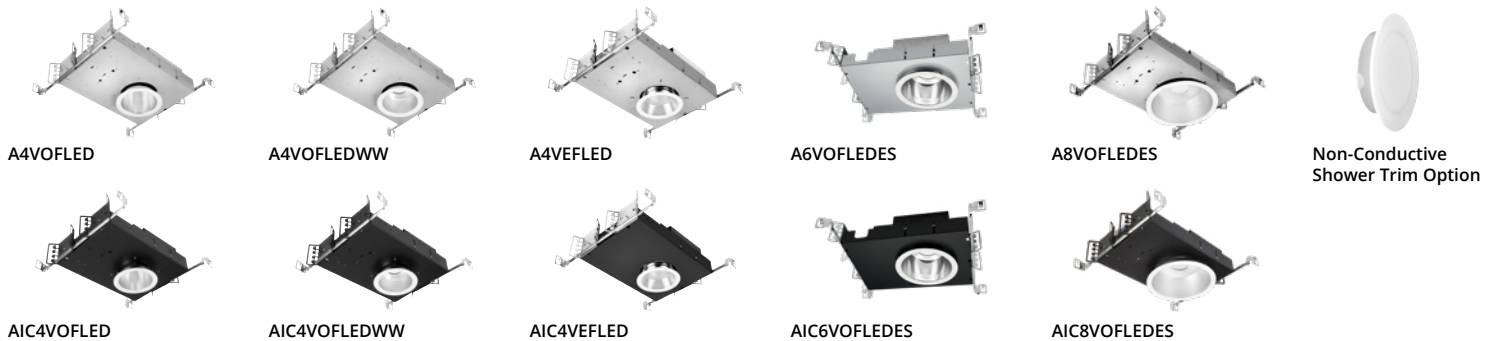
AIC4VOFLEDES

F-CLASS GEN V - EXTREME Shallow, under 2.5"

Find full offering of F-Class Gen V on vantageltg.com
See specsheet for full product details

| Shape | Size | Housing | Min. Height Above 5/8" Ceiling | Reflector Type | Voltage | Lumen | Kelvin | Distribution | Driver Options | Additional Options |
|---------------------|------|--------------|-----------------------------------|----------------|-------------------------------|-----------------------------------|----------------------------|--------------|----------------|--------------------|
| Non IC-RATED | | | | | | | | | | |
| Round | 4" | A4VOFLEDES | 2.43" | Open | Universal V, 120V, 277V | 750, 1100, 1500, 2000, 3000 | 27K, 30K, 35K, 40K, 50K | Wide 80° | ZDM | HCR, PF |
| IC-RATED | | | | | | | | | | |
| Round | 4" | AIC4VOFLEDES | 2.43" | Open | Universal V, 120V, 277V | 750, 1100, 1500, 2000, 3000 | 27K, 30K, 35K, 40K, 50K | Wide 80° | ZDM | HCR, PF |

ARCHITECTURAL-GRADE

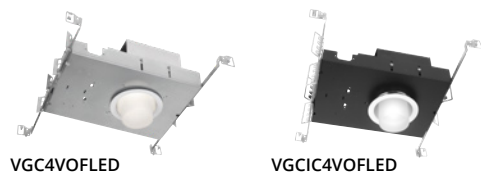


F-CLASS GEN V - Shallow, under 4"



Find full offering of F-Class Gen V on vantageltg.com
See specsheet for full product details

| Shape | Size | Housing | Min. Height Above 5/8" Ceiling | Reflector Type | Voltage | Lumen | Kelvin | Distribution | Driver Options | Additional Options |
|---------------------|--------------|--------------|-----------------------------------|-----------------------------|--|--|--|-----------------------|---|------------------------|
| Non IC-RATED | | | | | | | | | | |
| Round | 4" | A4VOFLED | 3.31"-3.61" | Open, Shower Trim Option | Universal V, 120V, 277V, 347V | 750, 1100, 1500, 2000, 3000, 4000, 5000 | 27K, 30K, 35K, 40K, 50K, TWC, TWW, DTW | Medium 60° | TDM, ZDM, DTD, DMX, DL-2, LDE1, PEQ0, PSQ0 | HCR, PF, EM17, EM17 |
| | | A4VOFLEDWW | | Open Wall Wash | | | | Medium 60° | | |
| | | A4VEFLED | | Regressed Lens | | | | 20°, 40°, 60°, 80° | | |
| | 6" | A6VOFLEDES | 3.33"-3.64" | Open | | | | Wide 80° | | HCR, PF, EM17, EM17 |
| 8" | A8VOFLEDES | 3.26"-3.57" | | | | | | | | |
| IC-RATED | | | | | | | | | | |
| Round | 4" | AIC4VOFLED | 3.31"-3.61" | Open, Shower Trim Option | Universal V, 120V, 277V, 347V | 750, 1100, 1500, 2000, 3000, 4000, 5000 | 27K, 30K, 35K, 40K, 50K, TWC, TWW, DTW | Medium 60° | TDM, ZDM | HCR, PF, EM17, EM17 |
| | | AIC4VOFLEDWW | | Open Wall Wash | | | | Medium 60° | | |
| | | AIC4VEFLED | | Regressed Lens | | | | 20°, 40°, 60°, 80° | | |
| | 6" | AIC6VOFLEDES | 3.33" - 3.64" | Open | | | | Wide 80° | | HCR, PF, EM17, EM17 |
| 8" | AIC8VOFLEDES | 3.26"-3.57" | | | | | | | | |



F-CLASS GEN V LUNA - Shallow, under 4"



Find full offering of F-Class Gen V on vantageltg.com
See specsheet for full product details

| Shape | Size | Housing | Min. Height Above 5/8" Ceiling | Reflector Type | Voltage | Lumen | Kelvin | Distribution | Driver Options | Additional Options |
|---------------------|------|--------------|-----------------------------------|----------------------------|--|--|---|--------------|---|-----------------------|
| Non IC-RATED | | | | | | | | | | |
| Round | 4" | VGC4VOFLED | 3.65"-3.96" | Decorative Drop Element | Universal V, 120V, 277V, 347V | 750, 1100, 1500, 2000, 3000, 4000, 5000 | 27K, 30K, 35K, 40K, 50K, TWC, TWW, DTW | Medium 40° | TDM, XDM, ZDM, DTD, DMX, DL-2, LDE1, PEQ0, PSQ0 | HCR, PF, EM17 |
| IC-RATED | | | | | | | | | | |
| Round | 4" | VGCIC4VOFLED | 3.65"-3.96" | Decorative Drop Element | Universal V, 120V, 277V, 347V | 750, 1100, 1500, 2000, 3000, 4000, 5000 | 27K, 30K, 35K, 40K, 50K, TWC, TWW, DTW | Medium 40° | TDM, ZDM | HCR, PF, EM17 |

ARCHITECTURAL-GRADE



A4VOFHL



A4VOFHLWW



A4VEFLED



A6VOFLED



A6VEFLED



A8VOFHL



A8VOFLEDWW



A8VEFLED



A10VOFHL



A10VEFHL

F-CLASS HILUMEN - HiLumen Shallow, under 7"

Find full offering of F-Class Gen HiLumen on vantageltg.com
See specsheet for full product details

| Shape | Size | Housing | Min. Height Above 5/8" Ceiling | Reflector Type | Voltage | Lumens | Kelvin | Distribution | Driver Options | Additional Options |
|---------------------|------|------------|--------------------------------|---------------------------|--|--|-----------------------|--------------|---------------------------|---|
| Non IC-RATED | | | | | | | | | | |
| Round | 4" | A4VOFLED | 4.53" | W4060 - Open | Universal V, 120V, 277V, 347V | 4000, 5000, 6000, 8000, 10000 | 30K, 35K, 40K, 50K | Wide 80° | SDM, ZDMHL, TDMHL, DMX | HCR, EM17, EMI17, EM20, EMI20, PF |
| | | A4VOFLEDWW | 5.47" | L4060 - Open | | | | Medium 60° | | |
| | | A4VEFLED | | L4160 - Open Wall Wash | | | | Wall Wash | | |
| | | | | L401_ - Regressed Lens | | | | Medium 60° | | |
| | 6" | A6VOFLED | 5.38" | W6060 - Open | | 4000, 5000, 6000, 8000, 10000, 12000 | | Wide 80° | | HCR, EM17, EMI17, EM20, EMI20, PF |
| | | A6VEFLED | 6.11" | M6060 - Open | | | | Medium 60° | | HCR, EM17, EM20, PF |
| | 8" | A8VOFHL | 5.36" - 6.54" | W8060 - Open | | 4000, 5000, 6000, 8000, 10000, 12000, 15000 | | Wide 100° | | HCR, EM17, EMI17, EM20, EMI20, PF |
| | | | | L8060 - Open | | | | | | |
| | | A8VOFLEDWW | 6.90" | L8160 - Open Wall Wash | | | | Wall Wash | | |
| | | A8VEFLED | | L801_ - Regressed Lens | | | | Medium 60° | | |
| | 10" | A10VOFHL | 5.36" - 6.54" | W801_ - Regressed Lens | | 4000, 5000, 6000, 8000, 10000, 12000, 15000 | | Narrow 20° | | HCR, EM17, EM20, PF |
| | | | | W1060 - Open | | | | Wide 100° | | HCR, EM17, EMI17, EM20, EMI20, PF |
| | | A10VEFHL | 6.05" | W101_ - Regressed Lens | | | | Medium 60° | | HCR, EM17, EM20, PF |

ARCHITECTURAL-GRADE



V4OVHMRI



V4EVHMRI



V4OVHMRIWW



VIC4OVHMRI



VIC4EVHMRI



VIC4OVHMRIWW

VHEALTH® MRI - Shallow, under 4"

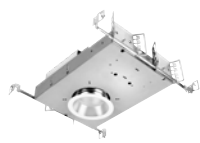


Find full offering of vHealth® Lighting on vantageltg.com
See specsheet for full product details

| Shape | Size | Housing | Min. Height Above 5/8" Ceiling | Reflector Type | Voltage | Lumen | Kelvin | Distribution | Driver Options | Additional Options |
|---------------------|------|-------------------|-----------------------------------|-------------------|--|--|----------------------------|-----------------------|---|-----------------------|
| Non IC-RATED | | | | | | | | | | |
| Round | 4" | V4OVHMRI | 3.43"-3.63" | Open | Universal V, 120V, 277V, 347V | 750, 1100, 1500, 2000, 3000, 4000, 5000 | 27K, 30K, 35K, 40K, 50K | Medium 60° | TDM, XDM, ZDM, DTD, DL-2, DL-3, LDE1, PEQ0, PSQ0, VEMI2, VEMI4 | HCR, PF, EM17 |
| | | Open Wall Wash | | | | | | | | |
| | | V4EVHMRI | | Regressed Lens | | | | 20°, 40°, 60°, 80° | | |
| IC-RATED | | | | | | | | | | |
| Round | 4" | VIC4OVHMRI | 3.43"-3.63" | Open | Universal V, 120V, 277V, 347V | 750, 1100, 1500, 2000, 3000, 4000, 5000 | 27K, 30K, 35K, 40K, 50K | Medium 60° | TDM, ZDM, VEMI-2, VEMI-4 | HCR, PF, EM17 |
| | | Open Wall Wash | | | | | | | | |
| | | VIC4EVHMRI | | Regressed Lens | | | | 20°, 40°, 60°, 80° | | |



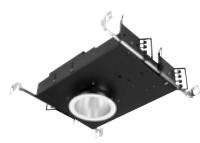
V4OVH



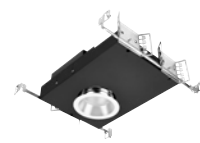
V4EVH



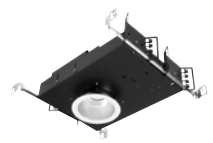
V4OVHWW



VIC4OVH



VIC4EVH



VIC4OVHWW

VHEALTH® LIGHTING - Shallow, under 4"



Find full offering of vHealth® Lighting on vantageltg.com
See specsheet for full product details

| Shape | Size | Housing | Min. Height Above 5/8" Ceiling | Reflector Type | Voltage | Lumen | Kelvin | Distribution | Driver Options | Additional Options |
|---------------------|------|-------------------|-----------------------------------|-------------------|--|--|--|-----------------------|---|-------------------------|
| Non IC-RATED | | | | | | | | | | |
| Round | 4" | V4OVH | 3.31"-3.61" | Open | Universal V, 120V, 277V, 347V | 750, 1100, 1500, 2000, 3000, 4000, 5000 | 27K, 30K, 35K, 40K, 50K, BSC, BSW, DTW | Medium 60° | TDM, ZDM, DTD, DL-2, DL-3, LDE1, PEQ0, PSQ0, VEMI2, VEMI4 | HCR, PF, EM17, EMI17 |
| | | Open Wall Wash | | | | | | | | |
| | | V4EVH | | Regressed Lens | | | | 20°, 40°, 60°, 80° | | |
| IC-RATED | | | | | | | | | | |
| Round | 4" | VIC4OVH | 3.31"-3.61" | Open | Universal V, 120V, 277V, 347V | 750, 1100, 1500, 2000, 3000, 4000, 5000 | 27K, 30K, 35K, 40K, 50K, BSC, BSW, DTW | Medium 60° | TDM, ZDM | HCR, PF, EM17, EMI17 |
| | | Open Wall Wash | | | | | | | | |
| | | VIC4EVH | | Regressed Lens | | | | 20°, 40°, 60°, 80° | | |

COMMERCIAL-GRADE



SQ22LEDEC



SQ44LEDEC

C-CLASS - EXTREME Shallow, under 2.5"

Find full offering of C-Class on vantageltg.com
See specsheet for full product details

| Shape | Size | Housing | Min. Height Above 5/8" Ceiling | Reflector Type | Voltage | Lumen | Kelvin | Distribution | Driver Options | Additional Options |
|---------------------|------|-----------|-----------------------------------|-------------------|--|-----------|-----------------------|--------------|---------------------------------------|-----------------------|
| Non IC-RATED | | | | | | | | | | |
| Square | 2" | SQ22LEDEC | 1.88" - 2.46" | Regressed Lens | Universal V, 120V, 277V, 347V | 700, 1300 | 27K, 30K, 35K, 40K | Medium | TDM, XDM, ZDM, DL-2, LDE1, PEQ0 | EM, HCR |
| | 4" | SQ44LEDEC | | | | | | | | |



A2VOCLEL



A2VECLEL



A4VOCLELADJ



A4VECLELADJ

C-CLASS - Shallow, under 4"

Find full offering of C-Class on vantageltg.com
See specsheet for full product details
*Adjustables are not available via velocity quick ship program

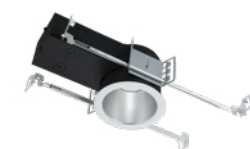
| Shape | Size | Housing | Min. Height Above 5/8" Ceiling | Reflector Type | Voltage | Lumen | Kelvin | Distribution | Driver Options | Options |
|---------------------|------|-------------|-----------------------------------|----------------------------|--|-----------|-----------------------|---|---------------------------------------|---------|
| Non IC-RATED | | | | | | | | | | |
| Round | 2" | A2VOCLEL | 3.33" | Open | Universal V, 120V, 277V, 347V | 700, 1300 | 27K, 30K, 35K, 40K | Narrow 18° Medium 28° Wide 39° Flood 62° | TDM, XDM, ZDM, DL-2, LDE1, PEQ0 | EM, HCR |
| | | A2VECLEL | | Flush Lensed | | | | | | |
| | 4" | A4VOCLELADJ | | Adjustable Open | | | | | | |
| | | A4VECLELADJ | | Adjustable Flush Lensed | | | | | | |



V4OFCR



V4OFCRWW



VIC4OFCR



VIC4OFCRWW



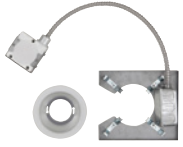
Non-Conductive Shower Trim Option

F-CLASS COMMERCIAL - Shallow, under 4"

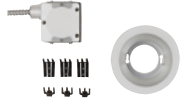
Find full offering of F-Class Commercial on vantageltg.com
See specsheet for full product details

| Shape | Size | Housing | Min. Height Above 5/8" Ceiling | Reflector Type | Voltage | Lumen | Kelvin | Distribution | Driver Options | Additional Options |
|---------------------|------|------------|-----------------------------------|-----------------------------|-------------------------------|--|----------------------------|--------------|-------------------|-----------------------|
| Non IC-RATED | | | | | | | | | | |
| Round | 4" | V4OFCR | 3.80"-3.96" | Open, Shower Trim Option | Universal V, 120V, 277V | 750, 1100, 1500, 2000, 3000, 4000, 5000 | 27K, 30K, 35K, 40K, 50K | Medium 60° | TDM, ZDM, SDM | HCR, PF, REM |
| | | V4OFCRWW | | Open Wall Wash | | | | | | |
| IC-RATED | | | | | | | | | | |
| Round | 4" | VIC4OFCR | 3.80"-3.96" | Open, Shower Trim Option | Universal V, 120V, 277V | 750, 1100, 1500, 2000 | 27K, 30K, 35K, 40K, 50K | Medium 60° | TDM, ZDM, SDM | HCR, PF, REM |
| | | VIC4OFCRWW | | Open Wall Wash | | | | | | |

COMMERCIAL-GRADE



RMD-4OFCR



RET-4OFCR



Non-Conductive Shower Trim Option

F-CLASS RETROFIT & REMODEL KITS - SHALLOW, UNDER 4"

Find full offering of F-Class Retrofit & Remodeler on vantageltg.com
See specsheet for full product details

| Shape | Size | Housing | Min. Height Above 5/8" Ceiling | Reflector Type | Voltage | Lumen | Kelvin | Distribution | Driver Options | Additional Options |
|---------------------|------|------------|-----------------------------------|---------------------------------------|--------------------------------|---------------------|---------------|--------------|-------------------|-----------------------|
| Non IC-RATED | | | | | | | | | | |
| Round | 4" | RMD-V4OFCR | 3.78" | Open Remodeler, Shower Trim Option | Universal V, 120V, 277V, | 1100, 1500, 2000 | 30K, 35K, 40K | Medium 60° | ZDM, DL-3 | REM, GR-4-XX |
| | | RET-V4OFCR | | Open Rerofit, Shower Trim Option | | | | | | |



Vantage Lighting

181 Narragansett Park Drive | East Providence, RI 02916

860.564.4512

vantageltg.com



Buy American Act Compliant
Made in Rhode Island, USA