

Part #	Prepared By
Project	Notes
Type	
Date	

# VED SERIES



## 4" Round Downlight New Construction

Open, IC Rated LED Downlight, 750-1500 Lumens



### Description

These New Construction downlights are engineered for performance and efficiency in value. Designed to provide features and options to meet the requirements of downlighting in most projects. The open spun reflector provides medium distribution and distinct cutoff. Standard 0-10V 10% driver. IC rated for direct contact with insulation. Optional Fire Rated to either 1 hour protection or 2 hour protection.

### Features and Construction

#### ELECTRICAL SYSTEM

- 750 - 1500 lumens
- 2700K - 5000K CCT
- 80 CRI with 3 SDCM color consistency (+90 CRI optional)
- Standard 0-10V 10% dimming driver; optional drivers available
- 120V - 277V Input Volts
- Minimum 50,000 hour lifetime at L70
- -20°C to 30°C Ambient Operating Temperature Range

#### OPTICS

- Precision spun reflector
- Reflectors available in Alzak® and painted finishes
- Distribution is free of streaks, striations and hotspots
- 80° Wide distribution
- 45° Cutoff

#### FRAME & MOUNTING

- Adjustable mounting ears and junction box
- Mounting ears accept standard hanger bars 14" - 24" (incl.)
- Mounting ears designed to accept C Channel or Flat bar stock mounting.
- Galvanized steel frame with integrated junction box

### Listings

- ETL certified to UL 1598 and UL8750 requirements
- Tested according to LM-79 and LM-80 standards
- Suitable for damp locations; Wet location under covered ceiling
- Buy American Act (BAA)

### Warranty & Notes

- 5-year limited warranty on LED module and driver
- [www.vantageltg.com/product-warranty](http://www.vantageltg.com/product-warranty)
- Photometric tests performed by an accredited NVLP facility and in accordance to IESNA LM-79-2008 testing procedures
- Insulation can be in direct contact with luminaire


### Lumens

Nominal Lumens	Delivered Lumens	Wattage	Lumens Per Watt
750	712	8.9	80.1
1100	1046	15.5	68.0
1500	1427	20.5	69.6

All measured at 3500K with a standard medium distribution  
\*Actual Wattage/Lumens may vary.

### Ordering Information

EXAMPLE: VEDIC4OCR-0735K-V4060-SGC-HCR -

		-			-		
Series	Voltage	Lumens	Kelvin (CCT)	Reflector	Reflector Finish	Options*	
<div>VEDIC4OCR</div> <div></div> <div>Options in purple qualify for the Velocity Quick Ship Program up to 100 pieces (up to 30 in EM). Refer to Velocity Guide for complete details.</div>	<div>U - 120V-277V*</div> <div>*Universal Voltage</div>	<div>07 - 750</div> <div>11 - 1100</div> <div>15 - 1500</div>	<div>27K - 2700K</div> <div>30K - 3000K</div> <div>35K - 3500K</div> <div>40K - 4000K</div> <div>50K - 5000K</div>	<div>V4060</div> <div>Wide 80° Open Reflector</div>	<div>WHT</div> <div>White Matte</div> <div>SGC</div> <div>Soft Glow Clear</div> <div><div>*All trims supplied standard with white painted flange.</div></div>	<div>SDM</div> <div>ZDM</div> <div>TDM</div> <div>HCR</div> <div>PF</div> <div>REM</div> <div>FR1</div> <div>FR2</div>	

#### \*Options Notes

**SDM** - 0-10V 10% dimming driver (Universal Voltage)

**ZDM** - 0-10V 1% dimming driver (Universal Voltage).

**TDM** - Triac (Forward Phase, 120V only) dimming driver.

**HCR** - High CRI, 90+ minimum. Not available in 5000 Kelvin.

**PF** - Polished Flange

**REM** - Emergency battery back-up. Remote test button & indicator light.

**FRx** - Fire rated to (1) hour or (2) hours

### Reflector Finishes



**WHT**  
White Matte



**SGC**  
Soft Glow Clear

Vantage reserves the right to change components, finishes or design details in any manner which does not alter the installed appearance or reduce performance and intended function.

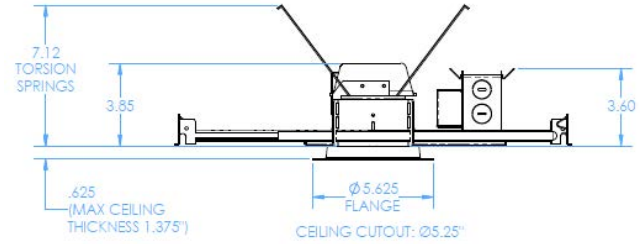
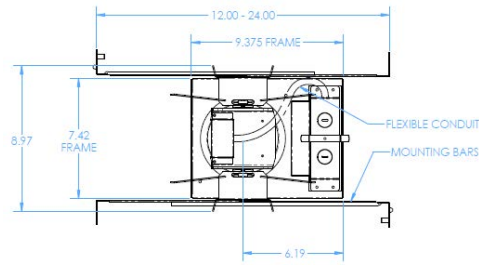
# 4" Round Downlight New Construction

Open, LED Downlight, 750-1500 Lumens - Shallow Housing

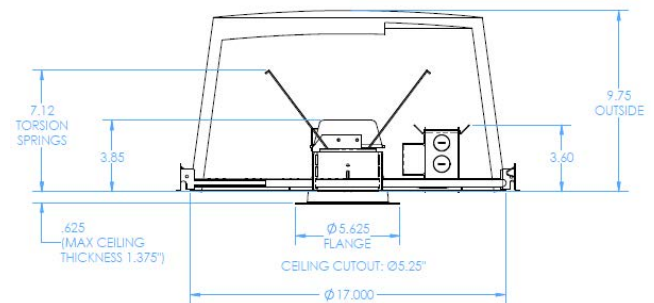
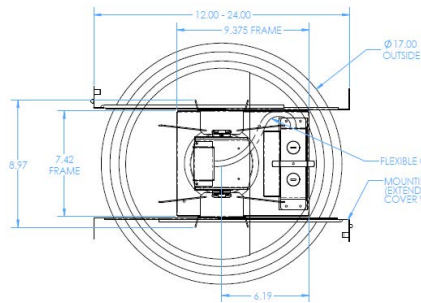
VED SERIES

## Dimensional Data

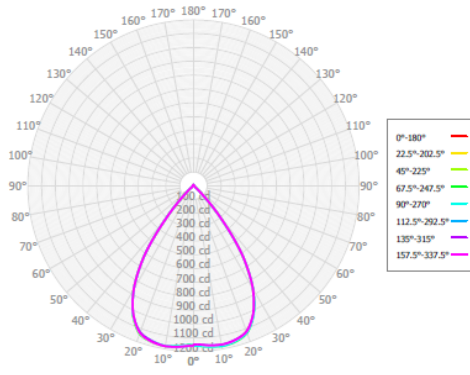
### New Construction



### Optional Fire Rated



### Candela Polar Plot



### IES Header Data

TEST	Lumen Scaled from 327
TESTLAB	Curtis Strauss
TESTDATE	
ISSUEDATE	1/20/2024
MANUFAC	Vantage Lighting
LUMCAT	VEDIC4OCRU-1535K
LUMINAIRE	LED VED IC Rated Commercial 4" Open
LAMPCAT	1500, 35K
LAMP	LED

### Average Luminaire Luminance [cd/m²]

	0.00°	45.00°	90.00°
0.00°	145404	145404	145404
45.00°	17148	17122	16596
55.00°	2762	2710	2453
65.00°	2177	2180	2013
75.00°	2606	2567	2446
85.00°	5559	5458	6238

### Zonal Lumen Summary

Zone	Lumens	% Fixture
0.00° - 10.00°	111.84	7.84%
10.00° - 20.00°	272.51	19.10%
20.00° - 30.00°	462.98	32.45%
30.00° - 40.00°	369.69	25.91%
40.00° - 50.00°	93.97	6.59%
50.00° - 60.00°	10.88	0.76%
60.00° - 70.00°	7.03	0.49%
70.00° - 80.00°	5.36	0.38%
80.00° - 90.00°	4.34	0.30%
90.00° - 100.00°	4.07	0.29%
100.00° - 110.00°	3.97	0.28%
110.00° - 120.00°	3.75	0.26%
120.00° - 130.00°	3.49	0.24%
130.00° - 140.00°	3.39	0.24%
140.00° - 150.00°	3.22	0.23%
150.00° - 160.00°	2.61	0.18%
160.00° - 170.00°	1.67	0.12%
170.00° - 180.00°	0.60	0.04%
0.00° - 90.00°	1400.13	98.12%
90.00° - 180.00°	26.76	1.88%
0.00° - 180.00°	1426.89	100.00%

### Spacing Criterion

Two luminaires, plane 0°	1.12
Two luminaires, plane 90°	1.13
Four luminaires	1.03

### Full Beam Angle

0° - 180°	71.15°
90° - 270°	71.11°

### Input

Number of Lamps	1
Luminous flux per Lamp	N/A lm
Input Watts	20.5 W

### Photometry Information

Distribution	Direct
Photometry Type	C

### Luminous Dimensions

0° - 180° Size	-0.33 ft
90° - 270° Size	-0.33 ft
Height	0 ft

## MULTIPLIER

CRI	Multiplier	Kelvin	Multiplier	Reflector Finish	Multiplier
80	1	2700K	0.939	WHT	0.87
90	0.81	3000K	0.975	SGC	0.95
		3500K	1		
		4000K	1.035		
		5000K	1.098		

Vantage reserves the right to change components, finishes or design details in any manner which does not alter the installed appearance or reduce performance and intended function.