

Part #	Prepared By
Project	Notes
Type	
Date	

# VED SERIES



## 4" Round Downlight REMODEL

### Open, LED Downlight, 750-2000 Lumens



### Description

These downlights, designed for remodeling an existing space to LED are engineered for performance and efficiency in value. Designed to provide features and options to meet the requirements of downlighting in most projects. The open spun reflector provides medium distribution and distinct cutoff. Standard 0-10v 10% driver. Options available.

### Features & Construction

#### ELECTRICAL SYSTEM

- 750 - 2000 lumens
- 2700K - 5000K CCT
- 80 CRI with 3 SDCM color consistency (+90 CRI optional)
- Standard 0-10V 10% dimming driver; optional drivers available
- 120V - 277V Input Volts
- Minimum 50,000 hour lifetime at L70
- -20°C to 30°C Ambient Operating Temperature Range

#### OPTICS

- Precision spun reflector
- Reflectors available in Alzak® and painted finishes
- Distribution is free of streaks, striations and hotspots
- 80° Wide distribution
- 45° Cutoff

#### FRAME & MOUNTING

- Galvanized steel remodel frame provided with (3) remodel clips to secure frame to ceiling.
- Junction box attached to frame by a spring clip.
- Galvanized steel frame with integrated junction box

### Listings

- ETL certified to UL 1598 and UL8750 requirements
- Tested according to LM-79 and LM-80 standards
- Suitable for damp locations; Wet location under covered ceiling
- Buy American Act (BAA)

### Warranty & Notes

- 5-year limited warranty on LED module and driver
- [www.vantageltg.com/product-warranty](http://www.vantageltg.com/product-warranty)
- Photometric tests performed by an accredited NVLP facility and in accordance to IESNA LM-79-2008 testing procedures
- Insulation cannot be in direct contact with luminaire

### Lumens

Nominal Lumens	Delivered Lumens	Wattage	Lumens Per Watt
750	1119	9.1	122.96
1100	1329	11	120.82
1500	1738	15.6	111.41
2000	2132	19.1	111.6

All measured at 3500K with a standard medium distribution  
\*Actual Wattage/Lumens may vary.

### Ordering Information

EXAMPLE: REM-VED4OCR-0735K-F4060-SGC-HCR -

		-			-			
Series	Voltage		Lumens	Kelvin (CCT)	Reflector	Reflector Finish	Options*	
REM-VED4OCR	U - 120V-277V* *Universal Voltage		07 - 750 11 - 1100 15 - 1500 20 - 2000	27K - 2700K 30K - 3000K 35K - 3500K 40K - 4000K 50K - 5000K	V4060 Wide 80° Open Reflector	WHT White Matte SGC Soft Glow Clear	SDM ZDM TDM HCR PF REM	
						*All trims supplied standard with white painted flange.		

#### \*Options Notes

SDM - 0-10V 10% dimming driver (Universal Voltage)

ZDM - 0-10V 1% dimming driver (Universal Voltage).

TDM - Triac (Forward Phase, 120V only) dimming driver.

HCR - High CRI, 90+ minimum. Not available in 5000 Kelvin.

PF - Polished Flange

REM - Emergency battery back-up. Remote test button & indicator light.

### Reflector Finishes



WHT  
White Matte

SGC  
Soft Glow Clear

Vantage reserves the right to change components, finishes or design details in any manner which does not alter the installed appearance or reduce performance and intended function.

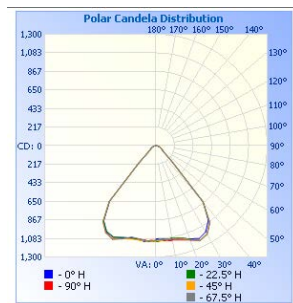
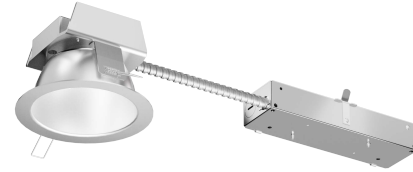
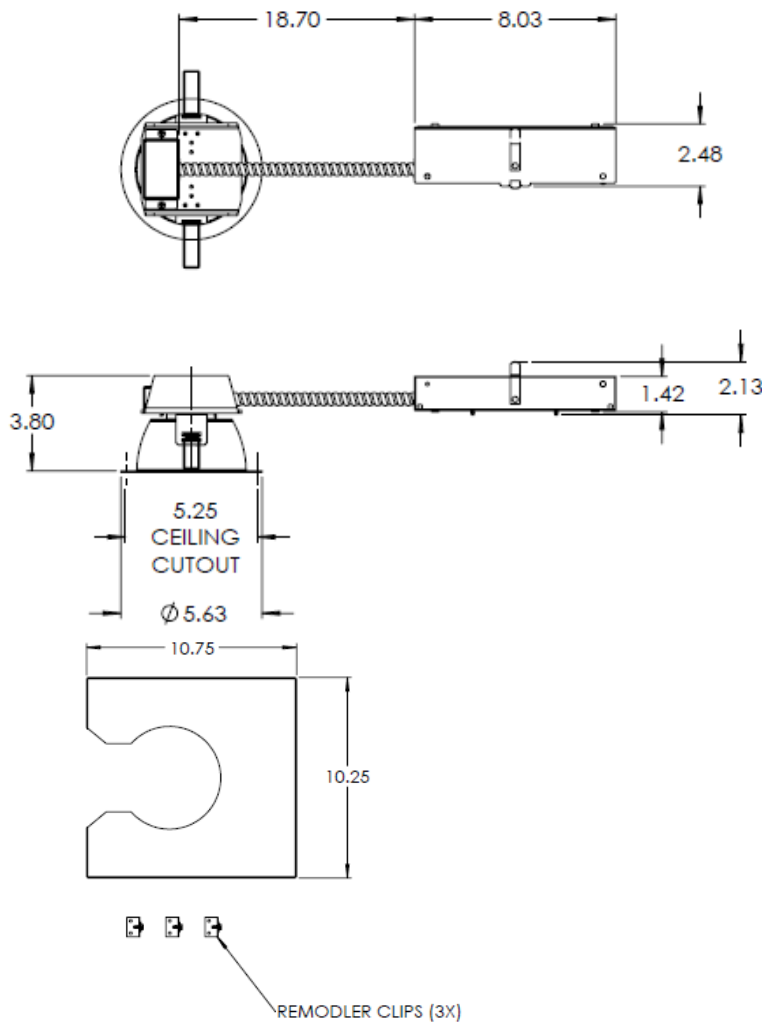
# 4" Round Downlight REMODEL

Open, LED Downlight, 750-2000 Lumens - Shallow Housing

VED SERIES

## Dimensional Data

### REMODEL



Illuminance at a Distance			
Center Beam fc		Beam Width	
1.7ft	383 fc	2.4 ft	3.1 ft
3.3ft	102 fc	4.6 ft	6.0 ft
5.0ft	44.2 fc	7.0 ft	9.0 ft
6.7ft	24.6 fc	9.4 ft	12.1 ft
8.3ft	16.1 fc	11.6 ft	15.0 ft
10.0ft	11.1 fc	14.0 ft	18.0 ft
■ Vert. Spread: 70.1° ■ Horiz. Spread: 84.1°			

Zonal Lumen Summary		
Zone	Lumens	% Luminaire
0-30	969.7	45.5%
0-40	1,619.0	75.9%
0-60	1,992.3	93.4%
60-90	102.3	4.8%
70-100	50.4	2.4%
90-120	16.8	0.8%
0-90	2,094.6	98.2%
90-180	37.5	1.8%
0-180	2,132.2	100%

Lumens Per Zone					
Zone	Lumens	% Total	Zone	Lumens	% Total
0-10	105.6	5.0%	90-100	5.9	0.3%
10-20	319.0	15.0%	100-110	5.6	0.3%
20-30	545.2	25.6%	110-120	5.3	0.2%
30-40	649.3	30.5%	120-130	5.1	0.2%
40-50	288.0	13.5%	130-140	5.0	0.2%
50-60	85.3	4.0%	140-150	4.4	0.2%
60-70	57.8	2.7%	150-160	3.4	0.2%
70-80	32.8	1.5%	160-170	2.0	0.1%
80-90	11.7	0.5%	170-180	0.7	0%

### MULTIPLIER

CRI	Multiplier	Kelvin	Multiplier	Reflector Finish	Multiplier
80	1	2700K	0.939	WHT	0.87
90	0.81	3000K	0.975	SGC	0.95
		3500K	1		
		4000K	1.035		
		5000K	1.098		

Vantage reserves the right to change components, finishes or design details in any manner which does not alter the installed appearance or reduce performance and intended function.