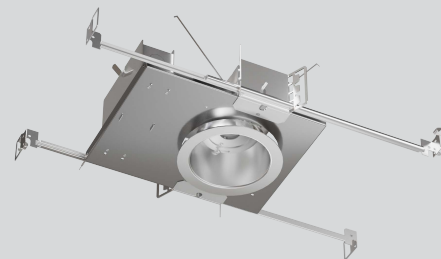


Part #	Prepared By
Project	Notes
Type	
Date	



6" Round Downlight New Construction

Open, LED Downlight, 750-2000 Lumens



Description

These New Construction downlights are engineered for performance and efficiency in value. Designed to provide features and options to meet the requirements of downlighting in most projects. The open spun reflector provides medium distribution and distinct cutoff. Standard 0-10V 10% driver. Options available.

Features & Construction

ELECTRICAL SYSTEM

- 750 - 2000 lumens
- 2700K - 5000K CCT
- 80 CRI with 3 SDCM color consistency (+90 CRI optional)
- Standard 0-10V 10% dimming driver; optional drivers available
- 120V - 277V
- Minimum 50,000 hour lifetime at L70
- -20°C to 30°C Ambient Operating Temperature Range

OPTICS

- Precision spun reflector
- Reflectors available in Alzak® and painted finishes
- Distribution is free of streaks, striations and hotspots
- Medium distribution
- 45° Cutoff

FRAME & MOUNTING

- Adjustable mounting ears and junction box
- Mounting ears accept standard hanger bars 14" - 24" (incl.)
- Mounting ears designed to accept C Channel or Flat bar stock mounting.
- Galvanized steel frame with integrated junction box

Listings

- ETL certified to UL 1598 and UL8750 requirements
- Tested according to LM-79 and LM-80 standards
- Suitable for damp locations; Wet location under covered ceiling
- Buy American Act

Warranty & Notes

- 5-year limited warranty on LED module and driver
- www.vantagelighting.com/product-warranty
- Photometric tests performed by an accredited NVLP facility and in accordance to IESNA LM-79-2008 testing procedures
- Insulation cannot be in direct contact with luminaire


Lumens

Nominal Lumens	Delivered Lumens	Wattage	Lumens Per Watt
750	1073	9.1	117.91
1100	1274	11	111.82
1500	1666	15.6	106.8
2000	2041	19.1	107.21

All measured at 3500K with a standard medium distribution
*Actual Wattage/Lumens may vary.

Ordering Information

EXAMPLE: VED60CR-0735K-F4060-SGC-HCR -

Series	Voltage	Lumens	Kelvin (CCT)	Reflector	Reflector Finish	Options*
VED60CR  Options in purple qualify for the Velocity Quick Ship Program up to 100 pieces (up to 30 in EM). Refer to Velocity Guide for complete details.	U - 120V-277V* *Universal Voltage **Must specify voltage when standard SDM 10% is selected. TDM (triac) is 120V only.	07 - 750 11 - 1100 15 - 1500 20 - 2000	27K - 2700K 30K - 3000K 35K - 3500K 40K - 4000K 50K - 5000K	V6060 Medium 60° Open Reflector V6019 Non-Conductive Shower Trim	WHT White Matte SGC Soft Glow Clear *All trims supplied standard with white painted flange.	SDM ZDM TDM HCR PF REM

*Options Notes

SDM - 0-10V 10% dimming driver (Universal Voltage).
ZDM - 0-10V 1% dimming driver (Universal Voltage).
TDM - Triac (Forward Phase, 120V only) dimming driver.
HCR - High CRI, 90+ minimum. Not available in 5000 Kelvin.
PF - Polished Flange
REM - Emergency battery back-up. Remote test button & indicator light.



WHT
White Matte



SGC
Soft Glow Clear

Vantage reserves the right to change components, finishes or design details in any manner which does not alter the installed appearance or reduce performance and intended function.

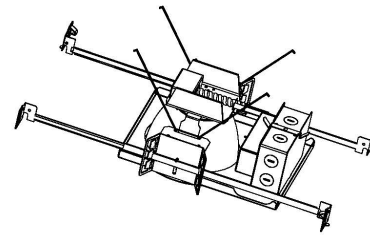
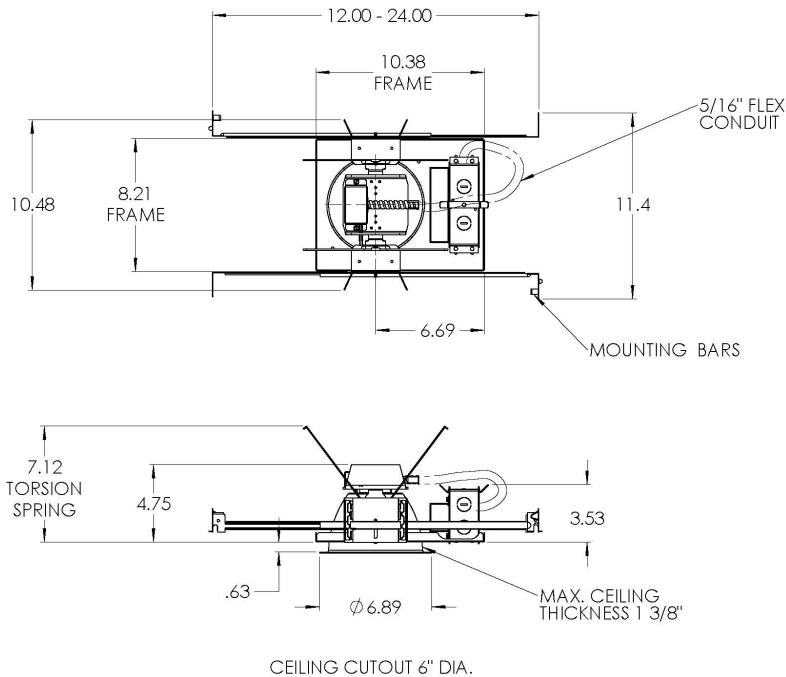
6" Round Downlight New Construction

VED SERIES

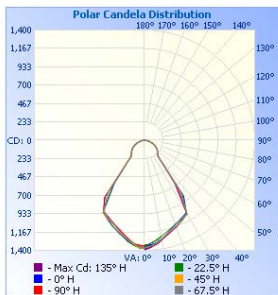
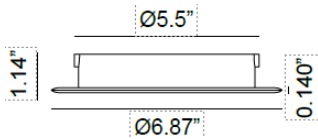
Open, LED Downlight, 750-2000 Lumens - Shallow Housing

Dimensional Data

New Construction



Non-Conductive Shower Trim - V6019



Illuminance at a Distance			
Center Beam fc		Beam Width	
1.7ft	472 fc	2.4 ft	2.5 ft
3.3ft	125 fc	4.7 ft	4.8 ft
5.0ft	54.5 fc	7.2 ft	7.3 ft
6.7ft	30.4 fc	9.6 ft	9.7 ft
8.3ft	19.8 fc	11.9 ft	12.0 ft
10.0ft	13.6 fc	14.3 ft	14.5 ft
■ Vert. Spread: 71.2° ■ Horiz. Spread: 71.9°			

Zonal Lumen Summary		
Zone	Lumens	% Luminaire
0-30	976.1	47.9%
0-40	1,416.9	69.5%
0-60	1,768.7	86.7%
60-90	234.8	11.5%
70-100	110.3	5.4%
90-120	16.9	0.8%
0-90	2,003.5	98.2%
90-180	36.2	1.8%
0-180	2,039.6	100%

Lumens Per Zone					
Zone	Lumens	% Total	Zone	Lumens	% Total
0-10	125.2	6.1%	90-100	6.2	0.3%
10-20	340.4	16.7%	100-110	5.5	0.3%
20-30	510.5	25.0%	110-120	5.1	0.3%
30-40	440.8	21.6%	120-130	4.8	0.2%
40-50	181.7	8.9%	130-140	4.6	0.2%
50-60	170.1	8.3%	140-150	4.1	0.2%
60-70	130.8	6.4%	150-160	3.2	0.2%
70-80	77.7	3.8%	160-170	2.0	0.1%
80-90	26.3	1.3%	170-180	0.7	0%

MULTIPLIER

CRI	Multiplier	Kelvin	Multiplier	Reflector Finish	Multiplier
80	1	2700K	0.939	WHT	0.87
90	0.81	3000K	0.975	SGC	0.95
		3500K	1		
		4000K	1.035		
		5000K	1.098		

Vantage reserves the right to change components, finishes or design details in any manner which does not alter the installed appearance or reduce performance and intended function.