

Part #	Prepared By
Project	Date
Type	

6" Dia. x 6" Tall LED Commercial Cylinder

LED, 1100-2000 Lumens



Description

Vantage Commercial Cylinders provide a great value to any project with budget constrictions. The 606FCR offers 1100 - 2000 lumen packages, available in 2700K - 5000K Kelvin and offers three mounting options. With an available 0-10V 1% and Triac dimming with a 90+ CRI option, these versatile cylinders can add value and reduce cost while delivering high-quality light.

Features & Construction

ELECTRICAL SYSTEM

- 1100 - 2000 Lumens up to 111 LPW
- 2700K - 5000K CCT
- 80 CRI with 3 SDCM color consistency
- Standard 0-10V 10% dimming driver (SDM)
- 120V - 277V Universal Input Volts
- Minimum 50,000 hour lifetime at L70
- -20°C to 30°C Ambient Operating Temperature Range
- Offering a 110° Distribution

HOUSING & MOUNTING

- .064" thick spun aluminum cylinder
- Exterior polyester powder coat with finishes of white matte, black matte, bronze and silver
- Heatsink - Integrated aluminum heat sink for superior thermal management.
- Pendant Mount - 3/8" IP x 12" long rigid stem with a 45° swivel canopy for sloped ceiling applications.
- CCK-72 - Cord & Cable Mount, 72" cord provided standard

Listings

- ETL certified to UL 1598 and UL8750 requirements
- Tested according to LM-79 and LM-80 standards
- Damp Location and Wet Location Under Covered Ceiling (per NEC 410 & UL 1598)
- Buy American Act (BAA Compliant)
- Flicker Free (per NEMA 77-2017)

Warranty & Notes

- 5-year limited warranty on LED module and driver
- www.vantageltg.com/product-warranty
- Photometric tests performed by an accredited NVLP facility and in accordance to IESNA LM-79-2008 testing procedures

Lumens*

Nominal Lumens	Delivered Lumens	Wattage	Lumens Per Watt
1100	1113	10	111.30
1500	1518	14	108.43
2000	2024	18.4	110.00

All measured at 3500K
*Actual Wattage/Lumens may vary.

ORDERING INFORMATION

EXAMPLE: VP606FCRU-1135K-BLK-SDM

Mounting Options	Series	Lumens	Kelvin (CCT)	Housing Finish	Dimming Options*	Additional Options**
VC Ceiling/Surface Mount	606FCRU	11 - 1100 15 - 1500 20 - 2000	27K - 2700K 30K - 3000K 35K - 3500K 40K - 4000K 50K - 5000K	WHT White Matte CS Silver BLK Black Matte	SDM (standard) ZDM TDM	HCR REM P-24 P-36 CH34TK CCK-72 CK-72
VP Pendant Mount						
VCK Cord Mount						

*Driver Options Notes

SDM - 0-10V 10% dimming driver (standard)
ZDM - 0-10V 1% dimming driver.
TDM - Triac (Forward Phase, 120V only) dimming driver.

**Additional Options Notes

HCR - High CRI, 90+ minimum. Not available in 5000 Kelvin.
REM - Emergency battery back-up. Remote test button & indicator light.
P24 - Pendant mount with 24" length
P36 - Pendant mount with 36" length
CH34TK - Field cut kits for stems, Pendant Mount only. Must be included for specified lengths not in 12" increments
CCK-72 - Cord & Cable Mount with 72" length - Order with VC option
CK-72 - Cord Mount with 72" length - Order with VCK option

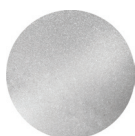
***Mounting Options Notes

- Standard Pendant lengths (stem): 12", 24", and 36".
- VP - 3/8" IP x 12" rigid stem with swivel canopy to accommodate sloped ceilings up to 45°.
- CCK-72 5 conductor cord to support 0-10V dimming (standard). Other lengths available.
- All Drivers are located within the cylinder body.

FINISHES



WHT
White Matte



CS
Silver

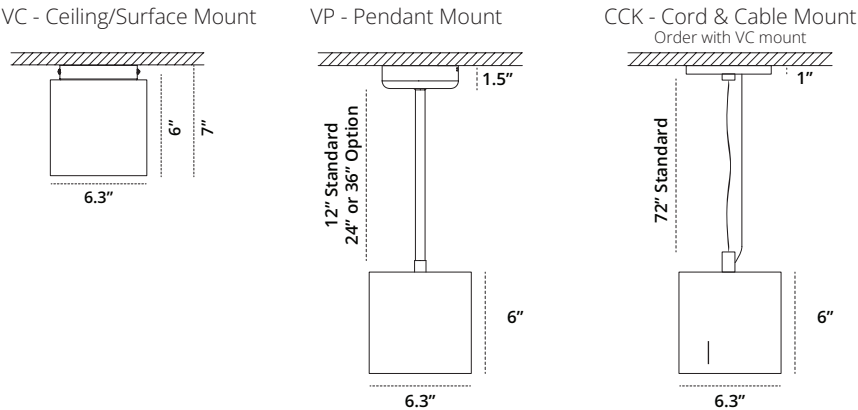


BLK
Black Matte

6" Dia. x 6" Tall LED Commercial Cylinder

LED, 1100-2000 Lumens

Mounting & Dimensional Data



Photometrics

110°

Model
606FCR-2035K

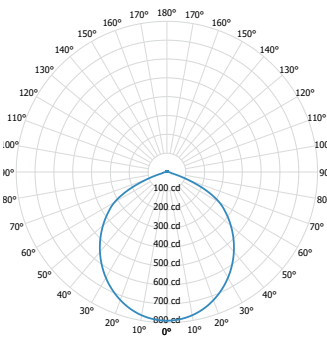
Lumens
2024

Watts
18.4

Efficacy
110.00

SC
1.21

Candela Curve



Cone of Light

Mounting Height AFF	FC at Center on Floor	Beam Diameter
8.0 ft	12 fc	22.1 ft
10.0 ft	8 fc	27.6 ft
12.0 ft	5 fc	33.2 ft
14.0 ft	4 fc	38.7 ft
16.0 ft	3 fc	44.2 ft
20.0 ft	2 fc	55.3 ft
24.0 ft	1 fc	66.3 ft
30.0 ft	1 fc	82.9 ft

Candela Table

	0.00°
0.00°	790
5.00°	785
10.00°	772
15.00°	752
20.00°	723
30.00°	648
40.00°	553
50.00°	443
60.00°	321
70.00°	114
80.00°	20
90.00°	5

Zonal Lumen Summary

Zone	Lumens	% Luminaire
0° - 30°	606	30%
0° - 40°	982	49%
0° - 60°	1708	84%
60° - 90°	285	14%
0° - 20°	290	14%
20° - 50°	1076	53%
50° - 70°	561	28%
70° - 90°	66	3%
0° - 90°	1993	98%
90° - 180°	31	2%
Total	2024	100%

Spacing Criterion

Height	Spacing	Light Level*
8 ft	9.7 ft	~ 12 fc
10 ft	12.1 ft	~ 8 fc
12 ft	14.5 ft	~ 5 fc
8 ft	7.3 ft	~ 22 fc
10 ft	9.1 ft	~ 14 fc
12 ft	10.9 ft	~ 10 fc
8 ft	4.8 ft	~ 49 fc
10 ft	6.0 ft	~ 32 fc
12 ft	7.3 ft	~ 22 fc

* approximate direct light level at floor based on spacing criterion overlap

MULTIPLIER

CRI	Multiplier	Kelvin	Multiplier
80	1	2700K	0.939
90	0.8	3000K	0.975
		3500K	1
		4000K	1.035
		5000K	1.098