

Part #	Prepared By
Project	Date
Type	

6"x10" LED Commercial Cylinder

LED, 1100-2000 Lumens



Description

Vantage Commercial Cylinders provide a great value to any project with budget constrictions. The 610FCR offers 1100 - 2000 lumen packages, available in 2700K - 5000K Kelvin and offers three mounting options. With an available 0-10V 1% and Triac dimming with a 90+ CRI option, these versatile cylinders can add value and reduce cost while delivering high-quality light.

Features & Construction

ELECTRICAL SYSTEM

- 1100 - 2000 Lumens up to 111 LPW
- 2700K - 5000K CCT
- 80 CRI with 3 SDCM color consistency
- Standard 0-10V 10% dimming driver (SDM)
- 120V - 277V Universal Input Volts
- Minimum 50,000 hour lifetime at L70
- -20°C to 30°C Ambient Operating Temperature Range
- Offering a 110° Distribution

HOUSING & MOUNTING

- .064" thick spun aluminum cylinder
- Exterior polyester powder coat with finishes of white matte, black matte, bronze and silver
- Heatsink - Integrated aluminum heat sink for superior thermal management.
- Pendant Mount - 3/8" IP x 12" long rigid stem with a 45° swivel canopy for sloped ceiling applications.
- CCK-72 - Cord & Cable Mount, 72" cord provided standard

Listings

- ETL certified to UL 1598 and UL8750 requirements
- Tested according to LM-79 and LM-80 standards
- Damp Location and Wet Location Under Covered Ceiling (per NEC 410 & UL 1598)
- Buy American Act (BAA Compliant)
- Flicker Free (per NEMA 77-2017)

Warranty & Notes

- 5-year limited warranty on LED module and driver
- www.vantageltg.com/product-warranty
- Photometric tests performed by an accredited NVLP facility and in accordance to IESNA LM-79-2008 testing procedures

Lumens*

Nominal Lumens	Delivered Lumens	Wattage	Lumens Per Watt
1100	1113	10	111.30
1500	1518	14	108.43
2000	2024	18.4	110.00

All measured at 3500K
*Actual Wattage/Lumens may vary.

ORDERING INFORMATION

EXAMPLE: VP610FCRU-1135K-BLK-SDM

Mounting Options	Series	Lumens	Kelvin (CCT)	Housing Finish	Dimming Options*	Additional Options**
VC Ceiling/Surface Mount	610FCRU	11 - 1100 15 - 1500 20 - 2000	27K - 2700K 30K - 3000K 35K - 3500K 40K - 4000K 50K - 5000K	WHT White Matte CS Silver BLK Black Matte	SDM (standard) ZDM TDM	HCR REM P-24 P-36 CH34TK CCK-72
VP Pendant Mount						

*Driver Options Notes

SDM - 0-10V 10% dimming driver (standard)
ZDM - 0-10V 1% dimming driver.
TDM - Triac (Forward Phase, 120V only) dimming driver.

**Additional Options Notes

HCR - High CRI, 90+ minimum. Not available in 5000 Kelvin.
REM - Emergency battery back-up. Remote test button & indicator light.
P24 - Pendant mount with 24" length
P36 - Pendant mount with 36" length
CH34TK - Field cut kits for stems, Pendant Mount only. Must be included for specified lengths not in 12" increments
CCK-72 - Cord & Cable Mount with 72" length - Order with VC option

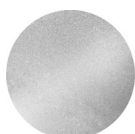
***Mounting Options Notes

- Standard Pendant lengths (stem): 12", 24", and 36".
- VP - 3/8" IP x 12" rigid stem with swivel canopy to accommodate sloped ceilings up to 45°.
- CCK-XX" 5 conductor cord to support 0-10V dimming (standard). Other lengths available.
- All Drivers are located within the cylinder body.

FINISHES



WHT
White Matte



CS
Silver

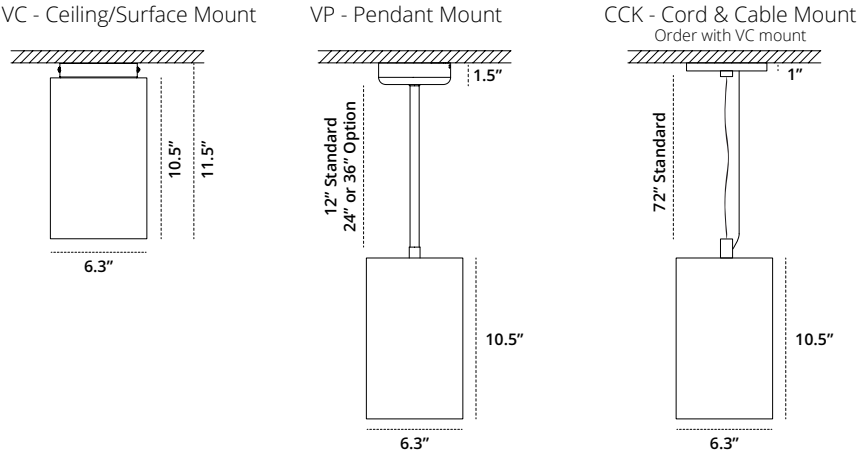


BLK
Black Matte

6"x10" LED Commercial Cylinder

LED, 1100-2000 Lumens

Mounting & Dimensional Data



Photometrics

110°

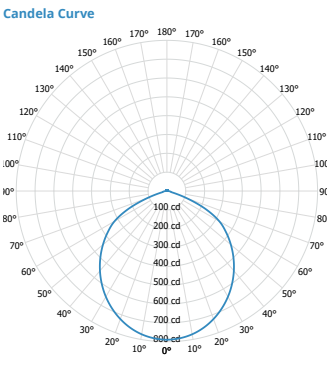
Model
610FCR-2035K

Lumens
2024

Watts
18.4

Efficacy
110.00

SC
1.21



Cone of Light			Candela Table			Zonal Lumen Summary			Spacing Criterion		
Mounting Height AFF	FC at Center on Floor	Beam Diameter		0.00°		Zone	Lumens	% Luminaire	Height	Spacing	Light Level*
8.0 ft	12 fc	22.1 ft		0.00°	790	0° - 30°	606	30%	8 ft	9.7 ft	~ 12 fc
10.0 ft	8 fc	27.6 ft		5.00°	785	0° - 40°	982	49%	10 ft	12.1 ft	~ 8 fc
12.0 ft	5 fc	33.2 ft		10.00°	772	0° - 60°	1708	84%	12 ft	14.5 ft	~ 5 fc
14.0 ft	4 fc	38.7 ft		15.00°	752	60° - 90°	285	14%	8 ft	7.3 ft	~ 22 fc
16.0 ft	3 fc	44.2 ft		20.00°	723	0° - 20°	290	14%	10 ft	9.1 ft	~ 14 fc
20.0 ft	2 fc	55.3 ft		30.00°	648	20° - 50°	1076	53%	12 ft	10.9 ft	~ 10 fc
24.0 ft	1 fc	66.3 ft		40.00°	553	50° - 70°	561	28%	8 ft	4.8 ft	~ 49 fc
30.0 ft	1 fc	82.9 ft		50.00°	443	70° - 90°	66	3%	10 ft	6.0 ft	~ 32 fc
				60.00°	321	0° - 90°	1993	98%	12 ft	7.3 ft	~ 22 fc
				70.00°	114	90° - 180°	31	2%			
				80.00°	20						
				90.00°	5						
						Total	2024	100%			

MULTIPLIER

CRI	Multiplier	Kelvin	Multiplier
80	1	2700K	0.939
90	0.8	3000K	0.975
		3500K	1
		4000K	1.035
		5000K	1.098