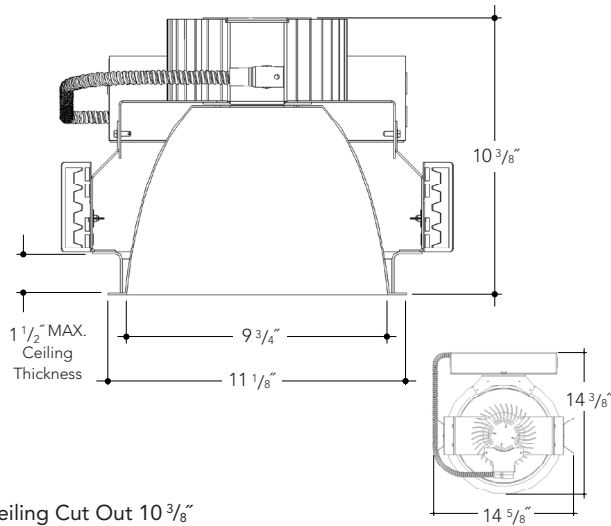


DIMENSIONS

Ceiling Cut Out 10 3/8"

FEATURES**Bridgelux Series Module**

A high output module featuring a wide variety of lumen and color packages. Standard solid state driver, provides stable and efficient performance and a variety of dimming control options.

Benefits

- Highly energy efficient solution: 90-100 lumens per watt.
- Wide range of color temperatures 2700 - 4000K.
- MacAdams color consistency 2-3 steps.
- Module features high quality accurate color production and uniform consistent white light.
- CRI 80.

Frame

Heavy duty galvanized steel components including frame, adjustable mounting ears and junction box. Fixture is prewired and grounded with easy access from below, listed for through branch circuit wiring.

Standard mounting bars (included) incorporate rigid formed cross sections and include joist positioning tabs, integral nails, auxiliary nailholes, T-Bar slots and holes for locking to grid using self-tapping screws (supplied by others). Mounting ears will accept our standard bars (14"-24" ext), optional Caddy #517B (27" ext) and other mounting methods.

Insulation must be kept 3" away from fixture. Listed for damp locations.



Manufactured and Listed to UL 1598, ETL and CSA standards.
Suitable for Damp Locations. Wet location under covered ceiling.

ORDERING INFORMATION**REFLECTOR KIT****OPEN - LED - ROUND**

LED 10" Aperture

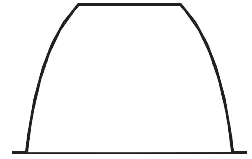
B1060 10" LED Open Round

Finish Options

SCL Specular Clear "Alzak"
SGC Soft Glow Clear
ECL Etch Clear
WHT White Reflector

Options

PF Polished Flange

**OPEN BAFFLED - LED - ROUND**

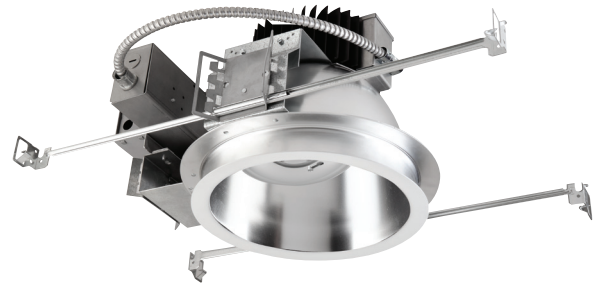
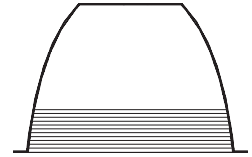
LED 10" Aperture

B1050 10" LED Open Baffled Round

Finish Options

Specify reflector finish option - see above,
then add baffle finish color

BL Black Baffle
WH White Baffle

**EXAMPLE: A10VBLEDM1-4027K-B1060-SCL**

Wattage LED	Housing	Voltage	Lumens	Kelvin	Reflector	Finish	Baffle	Options
See Chart	A10VBLED	1	-40 = 4000	27K = 2700K	B1060	SCL	BL	EM
Below		2	-50 = 5000	30K = 3000K	Baffled	SGC	WH	PF
			-60 = 6000	35K = 3500K	B1050	ECL		R
			-80 = 8000	40K = 4000K		WHT		RETRO

Consult Factory

Lumens	Wattage*
4000	43W
5000	58W
6000	71W
8000	86W

*Actual Wattage/Lumens may vary.

Voltage

1 - 120 Volts
2 - 277 Volts
3 - 347 Volt - Please Consult Factory

Options

EM - Emergency Battery
PF - Polished Flange
R - Remodeler (-80L Consult Factory)
Retro - Retrofit - Please Consult Factory

Vantage reserves the right to change components, finishes or design details in any manner which does not alter the installed appearance or reduce performance and intended function.

▲ See Options pages for other options and finishes.