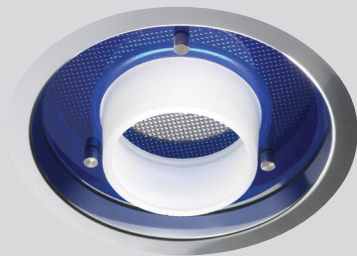


Part #	Prepared By
Project	Notes
Type	
Date	



8"-10" Architectural LED SATURN

Decorative Elements for F-Class Gen V



Manufactured and Listed to UL 1598, ETL and CSA standards.
Suitable for Damp Locations. Wet location under covered ceiling.

Description

Glowing light diffused by frosted opal glass. Prismatic C73 Acrylic or Frosted Lens Diffuser with an upper and lower Tier Accent Ring. Opal polycarbonate Frosted Cylindrical or Glass offers a wide, smooth distribution of light. Perfect for accent downlighting in most spaces. Other options include varied colors and finishes. Frosted option is standard.

DecoDisc Options

Refelctor

- L8060PL** 8" Round, Saturn-Prismatic Lens Diffuser
- L8060FL** 8" Round, Saturn-Frosted Lens Diffuser
- L8060PL** 10" Round, Saturn-Prismatic Lens Diffuser
- L0060FL** 10" Round, Saturn-Frosted Lens Diffuser

Upper Tier (UT) Lower Tier (LT) Options

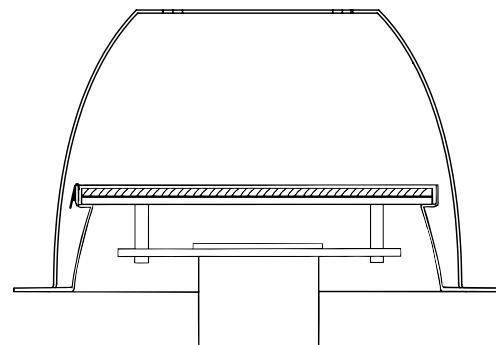
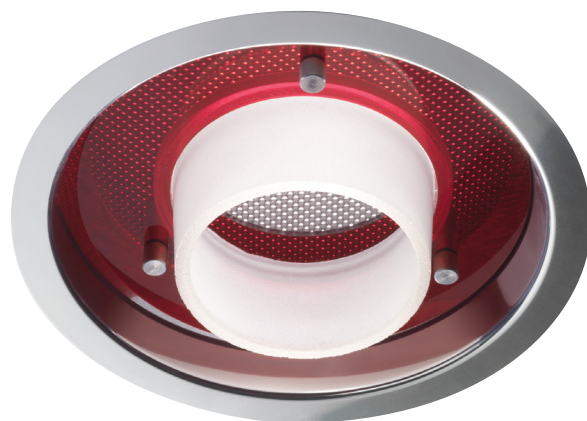
- BLU** Blue
- RED** Red
- GRN** Green
- TAN** Tan
- FRO** Frosted
- CLR** Clear
- CC** Custom Color

Reflector Finish

- SCL** Specular Clear "Alzak"
- SGC** Soft Glow Clear
- ECL** Etch Clear
- WHT** White Reflector

Options

- SSS** Stainless Steel Spacing Hardware (Standard)
- PBS** Polished Spacing Hardware
- ABS** Aluminum Spacing Hardware
- SP*** Custom Spacers
(Many Lengths Available Consult Factory)
- EM** Emergency Battery
- PF** Polished Flange



ORDERING INFORMATION

EXAMPLE: A8VOFLEDU-1530K-L8060PL-SGC-UTBLU-LTCLR-SSS

Series	Voltage	Lumens	Kelvin	Reflector	Reflector Finish	Upper Tier	Lower Tier	Options
Please refer to the following specsheets for Frame, Voltage, Lumens and Kelvin information.				Prismatic Lens Diffuser L8060PL L1060PL	SCL SGC ECL WHT	UTBLU UTRED UTGRN UTTAN UTFRO UTCLR UTCC	LTBLU LTRED LTGRN LTTAN LTFRO LTCLR LTCC	SSS PBS ABS SP* EM PF
8" F-Class Gen V				Frosted Lens Diffuser L8060FL L1060FL				
10" F-Class Gen V								

Vantage reserves the right to change components, finishes or design details in any manner which does not alter the installed appearance or reduce performance and intended function.