

Part #	Prepared By
Project	Notes
Type	
Date	



2" Capela[®] Series

Regressed Lens Round, 700-1300 lumens - Shallow Housing



2700K 3000K 3500K 4000K

Description

Capela[®] Series small-aperture architectural shallow downlights provide a modern aesthetic and high-end performance. Regressed Lens Capela[®] Series downlights have a deeply regressed LED and a frosted polycarbonate lens paired with a precision-spun reflector that provides 15°, 30°, and 45° beam spreads. New Construction, IC-Rated and Remodeler housing options available.

Features & Construction

ELECTRICAL SYSTEM

- Advanced QuickConnect for easy installation
- 700, 1300 lumens
- 2700K - 4000K CCT
- High-performance Dim-to-Warm optional
- Standard 0-10V 1% dimming driver (ZDM)
- 0-10V to 0.1% &, Lutron, & Triac/Forward phase optional
- High flux CoB array
- 80 CRI with 3 SDCM color consistency (+90 CRI optional)
- Minimum 50,000 hour lifetime at L70
- 120V - 277V Universal input standard

OPTICS

- Specular Clear, Soft Glow Clear or White Matte reflector finishes
- Efficient two-stage optical design with frosted polycarbonate regressed lens
- 15°, 30°, and 45° beam spreads

FRAME & MOUNTING

- Self-flanged cold-rolled steel housing
- Polyester powder coat
- Torsion springs for maximum ceiling retention
- Optional IC-rated up to 1,300 lumens With IC Box (NCFIC)
- Optional new construction frame (NCFQAQ)

Listings

- ETL certified to UL 1598 and UL8750 requirements
- Tested according to LM-79 and LM-80 standards
- Suitable for damp locations; Wet location under covered ceiling
- Buy American Act (BAA)

Warranty & Notes

- 5-year limited warranty on LED module and driver
- www.vantageltg.com/product-warranty
- Photometric tests performed by an accredited NVLP facility and in accordance to IESNA LM-79-2008 testing procedures
- Insulation cannot be in contact with non-IC-Rated versions

Performance

OUTPUT

Nominal Lumens	Wattage	All measured at 3500K with a standard medium distribution *Actual Wattage/Lumens may vary.
700	7.56	
1300	12.7	

EMERGENCY LUMEN OUTPUT

Nominal Lumens	Wattage	All measured at 3500K with a standard medium distribution *Actual Wattage/Lumens may vary.
300	2.5	

DIM-TO-WARM PERFORMANCE

Nominal Lumens	100%				1%			
	Wattage	CCT	CRI	R9	Wattage	CCT	CRI	R9
700	9.7	3100	95	85	2.9	1800	95	85
1300	13.2	3100	95	85	3.3	1800	95	85

Ordering Information

EXAMPLE: V2CRR-0730K-L2040-SCL-N-WHT-NCFQAQ-XDM

Series	Voltage	Lumens	Kelvin	Reflector	Finish	Distribution	Flange Finish	Frame	Options*
V2CRR	U - 120V-277V* 1 - 120 V 3 - 347V**	07 - 700 13 - 1300	27K - 2700K 30K - 3000K 35K - 3500K 40K - 4000K DTW - Dim-to-Warm (3000K-1800K)	L2040 Regressed Frosted Polycarbonate Lens	SGC Soft Glow Clear SCL Specular Clear WHT White Matte	N - Narrow 15° M - Medium 30° W - Wide 45°	WHT White Matte BLK Black Matte	NCFQAQ New Construction Frame NCFIC New Construction Frame w/ IC-RATED Box RMDL Remodeler	ZDM (standard) XDM TDM DL-2 DL-3 LDE1 LDES PEQ0 HCR EM

Options in purple qualify for the Velocity Quick Ship Program up to 100 pieces (up to 30 in EM). Refer to Velocity Guide for complete details. NCFQAQ only

*Options Notes

ZDM - 0-10V 1% dimming driver (standard)
XDM - 0-10V 0.1% dimming driver
TDM - Triac (Forward-Phase) dimming driver
DL-2 - Lutron 2-Wire Hi-Lume dimming driver
DL-3 - Lutron 3-Wire Hi-Lume dimming driver
LDE1 - Lutron EcoSystem Digital Fade-to-Black 1% dimming driver
LDES - Lutron 5-Series EcoSystem 5% dimming driver
PEQ0 - Lutron EcoSystem Fade-to-Black 0.1% dimming driver
HCR - High CRI, 90+
EM - Remote emergency battery back-up, remote test button & indicator light

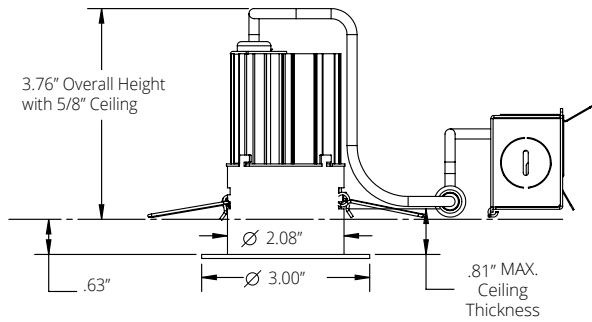
2" Capela® Series

Regressed Lens Round, 700-1300 lumens - Shallow Housing

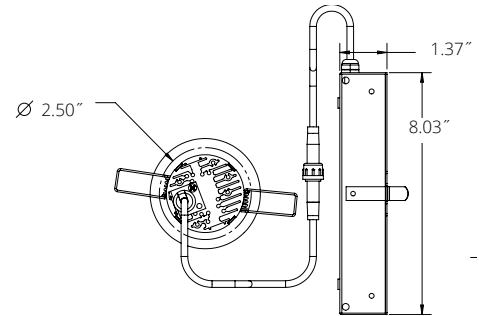
Capela®
SERIES

Dimensional Data

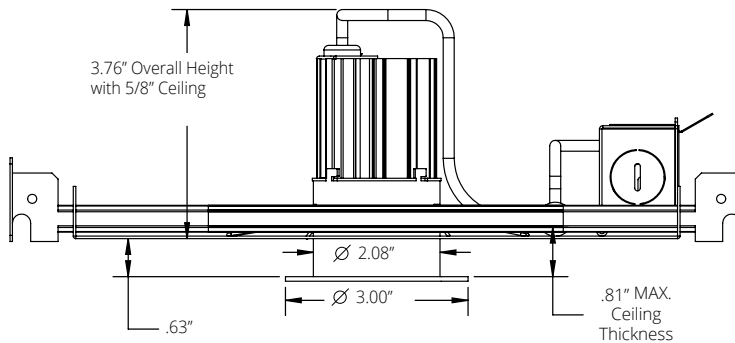
RMDL
(standard)



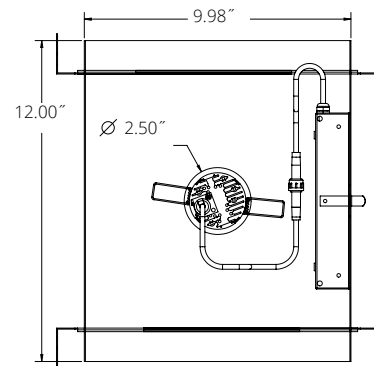
Ceiling Cut Out Ø2.50"



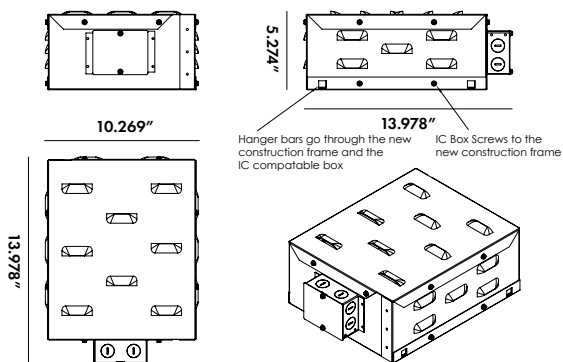
NCFAQ
(new construction frame)



Ceiling Cut Out Ø2.50"



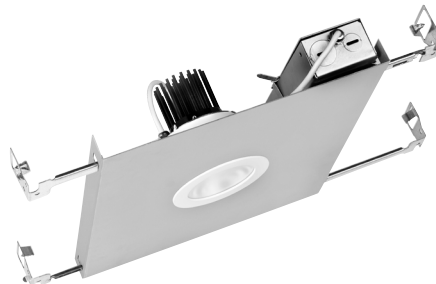
NCFIC
(IC-RATED)



RMDL
(standard)



NCFAQ
(new construction frame)



*New construction frame
sold separately

NCFIC
(IC-RATED)



*IC-RATED box
sold separately

2" Capela® Series

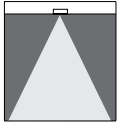
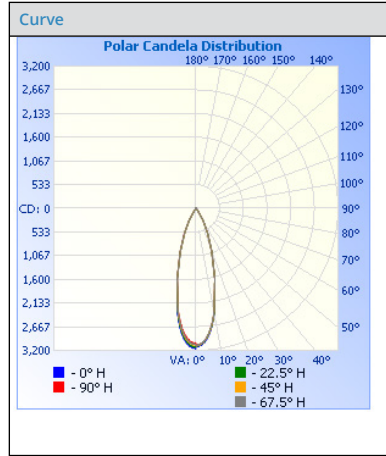
Regressed Lens Round, 700-1300 lumens - Shallow Housing

Capela®
SERIES

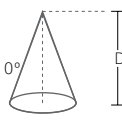
Photometry

15° Distribution

Test Number
PHM-RPT-171026-D07
Model
V2CRRU-1335K-N
Lumens
1138.94
Efficacy
77.63
SC
0.9910

Cone of Light



	Center Beam fc	Beam Width	
1.7	1071	1.0	0.9
3.3	284	1.9	1.8
5.0	124	2.8	2.8
6.7	68.9	3.8	3.7
8.3	44.9	4.7	4.6
10.0	30.9	5.6	5.6

Candela Table

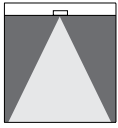
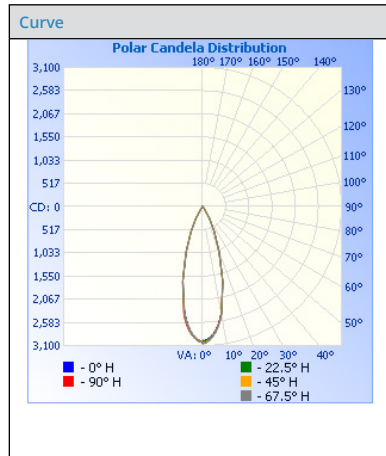
Degrees Vertical	Candela
0.0	3094
5.0	2936
10.0	2373
15.0	1637
20.0	1027
25.0	624
30.0	329
35.0	97
40.0	35
45.0	20
50.0	11
55.0	8
60.0	6
65.0	5
70.0	5
75.0	5
80.0	5
85.0	5
90.0	3

Zonal Lumen Summary

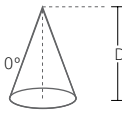
Zone	Lumens	% Luminaire
0-30	998.5	87.7
0-40	1078.8	94.7
10-60	1102.1	95.8
60-90	15.1	1.3
0-90	117.3	98.1
90-180	21.7	1.9
0-180	1139.0	100.0

30° Distribution

Test Number
PHM-RPT-171026-D06
Model
V2CRRU-1335K-M
Lumens
1142.59
Efficacy
77.56
SC
0.9906

Cone of Light



	Center Beam fc	Beam Width	
1.7	1040	1.0	1.0
3.3	276	2.0	2.0
5.0	120	3.0	3.0
6.7	57.0	4.0	4.0
8.3	43.6	5.0	5.0
10.0	30.1	6.0	6.0

Candela Table

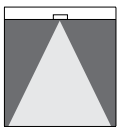
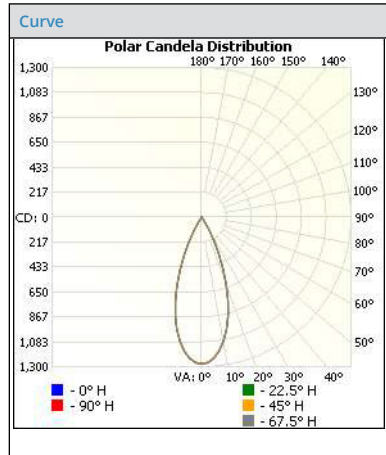
Degrees Vertical	Candela
0.0	3007
5.0	2837
10.0	2414
15.0	1729
20.0	1076
25.0	610
30.0	291
35.0	71
40.0	27
45.0	17
50.0	11
55.0	9
60.0	7
65.0	5
70.0	5
75.0	5
80.0	4
85.0	4
90.0	3

Zonal Lumen Summary

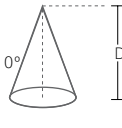
Zone	Lumens	% Luminaire
0-30	1014.9	88.8
0-40	1086.6	95.1
10-60	1107.5	96.9
60-90	14.2	1.2
0-90	1121.7	98.2
90-180	20.9	1.8
0-180	1142.6	100.0

45° Distribution

Test Number
103233437CRT-008
Model
V2CRRU-0735K-W
Lumens
543.1
Efficacy
71.9
SC
0.863

Cone of Light



	Center Beam fc	Beam Width	
1.7	441	1.2	1.2
3.3	117	2.4	2.4
5.0	51.0	3.6	3.6
6.7	28.4	4.8	4.8
8.3	18.5	6.0	6.0
10.0	12.7	7.2	7.2

Candela Table

Degrees Vertical	Candela
0.0	1274
5.0	1227
10.0	1092
15.0	885
20.0	625
25.0	352
30.0	140
35.0	19
40.0	8
45.0	4
50.0	1
55.0	0
60.0	0
65.0	0
70.0	0
75.0	0
80.0	0
85.0	0
90.0	0

Zonal Lumen Summary

Zone	Lumens	% Luminaire
0-30	514.9	94.8
0-40	539.7	99.4
10-60	543.1	100.0
60-90	0.0	0.0
0-90	543.1	100.1
90-180	0.0	0.0
0-180	543.1	100.0

CAPELA Lumen Output Multipliers

CRI	MULTIPLIER
80	1
90	0.82

KELVIN	MULTIPLIER
4000K	1.036
3500K	1
3000K	0.974
2700K	0.94

FINISH	MULTIPLIER
SCL	1
SGC	0.95
WHT	0.87