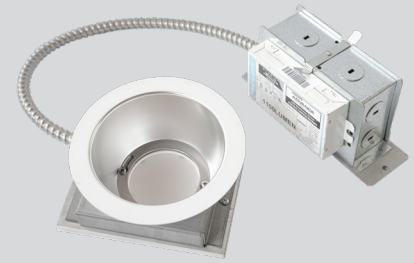


Part #	Prepared By
Project	Date
Type	

4" Round, Retrofit Commercial

Open, LED Retrofit Kit, 1100-2000 Lumens - Shallow Housing



Description

F-Class Commercial LED Retrofit kits are designed to update existing CFL, incandescent, halogen and HID downlights. Easy to install and reduce lighting energy and maintenance costs. Standard 0-10V 10% dimming driver; optional drivers available.

Features & Construction

ELECTRICAL SYSTEM

- 1100 - 2000 lumens
- 2700K - 5000K CCT
- 80 CRI with 3 SDCM color consistency (+90 CRI optional)
- Standard 0-10V 10% dimming driver (SDM); optional drivers available
- 120V - 277V universal Input Volts
- Minimum 50,000 hour lifetime at L70
- -20°C to 30°C Ambient Operating Temperature Range

OPTICS

- Precision spun reflector
- Reflectors available in Specular Clear, Soft Glow Clear and White Matte
- Distribution is free of streaks, striations and hotspots
- 60° Medium distribution
- 45° Cutoff

FRAME & MOUNTING

- Minimal components above ceiling to fit into existing spaces
- Key Slots secure reflector to LED light engine assembly
- Reflector and LED assembly are securely held to ceiling with friction clips

Listings

- ETL certified to UL 1598 and UL8750 requirements
- Tested according to LM-79 and LM-80 standards
- Energy Star® certified versions available (see Vantage Energy Star® guide for details)
- Damp Location and Wet Location Under Covered Ceiling (per NEC 410 & UL 1598)
- Buy American Act (BAA)

Warranty & Notes

- 5-year limited warranty on LED module and driver
- www.vantageltg.com/product-warranty
- Photometric tests performed by an accredited NVLP facility and in accordance to IESNA LM-79-2008 testing procedures
- Insulation cannot be in direct contact with luminaire

Lumens

Nominal Lumens	Delivered Lumens	Wattage	Lumens Per Watt
1100	1176	15.4	76.36
1500	1604	20.5	78.24
2000	2260	25.3	89.33

All measured at 3500K with a standard medium distribution
 *Actual Wattage/Lumens may vary.

Ordering Information

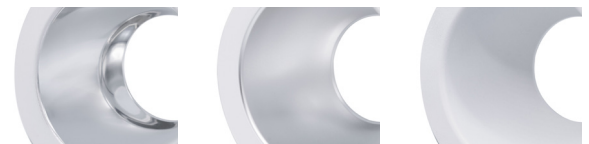
EXAMPLE: RET-V4OFCR1-2035K-F4060-SGC-R-SDM-HCR

		-			-		-		
Series	Voltage		Lumens	Kelvin (CCT)	Reflector	Reflector Finish		Options*	
RET-V4OFCR	U - 120V-277V* *Universal Voltage only available with ZDM-1% Driver. 1 - 120V** 2 - 277V** **Must specify voltage when standard SDM 10% is selected. TDM (triac) is 120V only.		11 - 1100 15 - 1500 20 - 2000	27K - 2700K 30K - 3000K 35K - 3500K 40K - 4000K 50K - 5000K	F4060 60° Medium Open Reflector F4019 Non-Conductive Shower Trim	SCL-R Specular Clear SGC-R Soft Glow Clear WHT-R White Matte *All trims supplied standard with white painted flange.		SDM (standard) ZDM TDM HCR PF REM	

*Options Notes

SDM - 0-10V 10% dimming driver (standard, Must Specify Voltage as 120V or 277V)
ZDM - 0-10V 1% dimming driver (Universal Voltage).
TDM - Triac (Forward Phase, 120V only) dimming driver.
HCR - High CRI, 90+ minimum. Not available in 5000 Kelvin.
PF - Polished Flange
REM - Emergency battery back-up. Remote test button & indicator light.

Reflector Finishes



SCL-R
Specular Clear

SGC-R
Soft Glow Clear

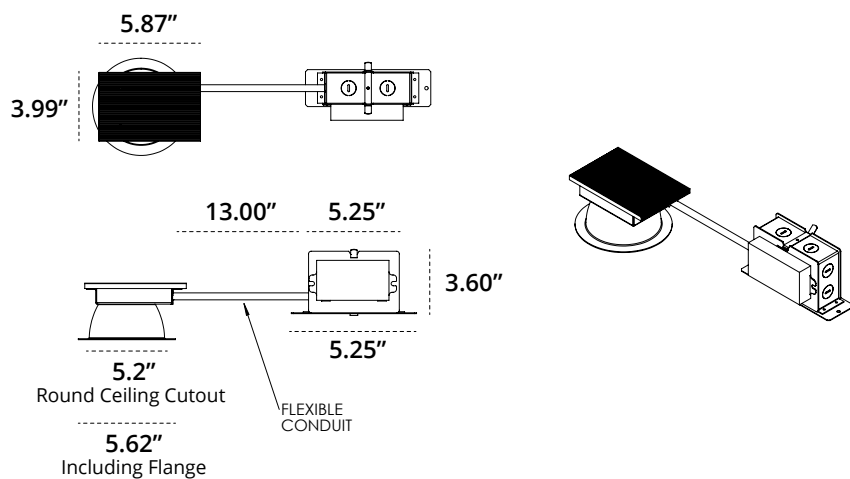
WHT-R
White Matte

4" Round, Retrofit Commercial

Open, LED Retrofit Kit, 1100-2000 Lumens - Shallow Housing

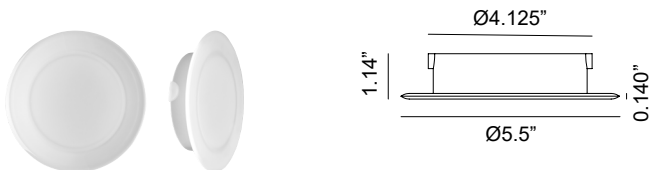
F-CLASS
RETROFIT & REMODELER

Dimensional Data

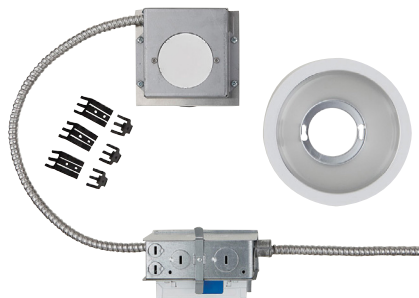


SHOWER TRIM - ROUND 4" Aperture

L4019 Non Conductive Shower Trim



RETROFIT KIT CONTENTS



MEDIUM - 60° 2035K

Model
V4OFCR-2035K-F4060-SCL

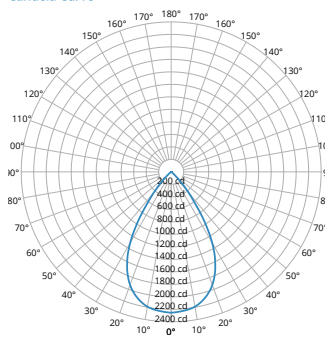
Lumens
2,260

Watts
25.3

Efficacy
89.33

SC
0.99

Candela Curve



Cone of Light

Mounting Height AFF	FC at Center on Floor	Beam Diameter
8.0 ' 1	35 fc	10.0 ' 1
10.0 ' 1	23 fc	12.5 ' 1
12.0 ' 1	16 fc	15.0 ' 1
14.0 ' 1	12 fc	17.5 ' 1
16.0 ' 1	9 fc	20.0 ' 1
20.0 ' 1	6 fc	24.9 ' 1
24.0 ' 1	4 fc	29.9 ' 1
30.0 ' 1	3 fc	37.4 ' 1

Candela Table

0.00°	0.00°
2,254	2,233
2,233	2,088
2,088	0
0	90.00°

Zonal Lumen Summary

Zone	Lumens	% Luminaire
0° - 30°	1,556	69%
0° - 40°	2,084	93%
0° - 60°	2,238	99%
60° - 90°	22	1%
0° - 20°	800	36%
20° - 50°	1,477	66%
50° - 70°	45	2%
70° - 90°	9	0%
0° - 90°	2,253	100%
90° - 180°	0	0%
Total	2,253	100%

Spacing Criterion

Height	Spacing	Light Level*
8 ft	7.9 ft	~ 35 fc
10 ft	9.9 ft	~ 23 fc
12 ft	11.9 ft	~ 16 fc
8 ft	5.9 ft	~ 63 fc
10 ft	7.4 ft	~ 40 fc
12 ft	8.9 ft	~ 28 fc
8 ft	4.0 ft	~ 141 fc
10 ft	5.0 ft	~ 90 fc
12 ft	5.9 ft	~ 63 fc

* approximate direct light level at floor based on spacing criterion overlap

MULTIPLIER

CRI	Multiplier	Kelvin	Multiplier	Reflector Finish	Multiplier
80	1	2700K	0.939	SCL	1
90	0.81	3000K	0.975	SGC	0.95
		3500K	1	WHT	0.87
		4000K	1.035		
		5000K	1.098		