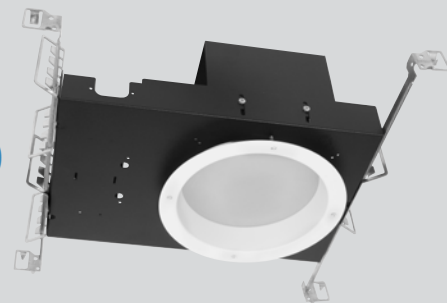


Part #	Prepared By
Project	Notes
Type	
Date	

8" Round, Vandal Resistant F-Class Gen V - IC-RATED

Lensed, LED Downlight, 750-5000 Lumens



Features & Specifications

ELECTRICAL SYSTEM

- 750 - 5000 lumens
- 2700K - 5000K CCT
- Optional Tunable White, 2700K - 6500K or 1800K - 4000K CCT
- 80 CRI with 3 SDCM color consistency (+90 CRI optional)
- Standard 0-10V 1% dimming driver, ZDM; optional drivers available
- 120V - 277V Universal Input Volts, 347V option
- Minimum 50,000 hour lifetime at L70
- -20°C to 30°C Ambient Operating Temperature Range

OPTICS

- Robust spun reflector with regressed lens
- Durable polycarbonate lens
- Optics & Trim secured with tamper-proof screws (proprietary screwdriver included)
- Reflector available in Alzak® and painted finishes
- 60° Medium distribution
- Easy to clean

FRAME & MOUNTING

- Galvanized steel frame with integrated junction box featuring hinged access covers with spring retaining latches
- Vertically adjustable rigid formed mounting brackets that accept a variety of mounting bars with auxiliary nail holes and T-bar slots
- T-Bars included, suitable for joist spacing from 12" to 24"
- Supports straight conduit runs - (3) 3/4" knockouts
- Through branch wiring - (8) #12 AWG (4 in, 4 out), 90°C conductors
- Accessibility to all LED components from below ceiling
- Flush to the ceiling reflectors, secured by high quality friction clips

Listings

- ETL certified to UL 1598 and UL8750 requirements
- Tested according to LM-79 and LM-80 standards
- Energy Star® certified versions available (see Vantage Energy Star® guide for details)
- Suitable for damp locations under covered ceiling
- IC-Rated: insulation can be in direct contact with luminaire
- Buy American Act (BAA)

Warranty & Notes

- 5-year limited warranty on LED module and driver
- www.vantageltg.com/product-warranty
- Photometric tests performed by an accredited NVLP facility and in accordance to IESNA LM-79-2008 testing procedures

Lumens*

Nominal Lumens	Delivered Lumens	Wattage	Lumens Per Watt
750	592	9.4	62.98
1100	869	15.4	56.43
1500	1185	21.6	54.86
2000	1579	27.2	58.05
3000	2369	33.5	70.72
4000	3159	45.6	69.28
5000	3949	59.75	66.09

All measured at 3500K with a standard medium distribution
**Actual Wattage/Lumens may vary.*

Ordering Information

EXAMPLE: VVRL8VEFLEDU-1130K-VVRL8011P-SGC-ZDM

VVRL8VEFLED		-		-		-		-	
Series	Voltage	Lumens	Kelvin (CCT)	Reflector/Lens*	Finishes	Options**			
VVRL8VEFLED	U - 120V-277V 1 - 120V 2 - 277V 3 - 347V (347V Step Down Transformer) *Must provide voltage when optional drivers are selected.	07 - 750 11 - 1100 15 - 1500 20 - 2000 30 - 3000 40 - 4000 50 - 5000	27K - 2700K 30K - 3000K 35K - 3500K 40K - 4000K 50K - 5000K TWC - Tunable White Full Color (2700k-6500k)* TWW - Turnable White Warm Color (1800k-4000k)* DTW - Dim-to-Warm (1800K-3000K)** *Available up to 2000 lumens **Available up to 5000 lumens	VVRL8011P VVRL8011FRP VVRL8014P VVRL8012D 20° VVRL8014D 40° VVRL8016D 60° VVRL8018D 80°	SCL Specular Clear SGC Soft Glow Clear WHT White Matte *All trims supplied standard with white painted flange.	ZDM (standard) DTD DTDHL DMX DCA TDM DMM	HCR PF AT EM17 EM-CW-LED GR-6-“xx” GTD SENSDYOC BRGESEN		

*Lens Notes

VVRL8011P - Medium 60° Clear Polycarbonate Lensed Reflector
 VVRL8011FRP - Medium 60° Frosted Polycarbonate Lensed Reflector
 VVRL8014P - Medium 60° Prismatic Acrylic Lensed Reflector
 VVRL8012D - BeamShaper® Lens, 20° Beam Angle Reflector
 VVRL8014D - BeamShaper® Lens, 40° Beam Angle Reflector
 VVRL8016D - BeamShaper® Lens, 60° Beam Angle Reflector
 VVRL8018D - BeamShaper® Lens, 80° Beam Angle Reflector

**Options Notes

ZDM - 0-10V 1% dimming driver (standard)
 DTD - 0-10V 0.1% dimming driver. (up to 4000 Lumens)
 DTDHL - 0-10V 0.1% dimming driver. (use with 5000 -7000 Lumens)
 DMX - DMX with RDM dimming driver, requires DCA
 DCA - Daisy Chain Adaptor
 TDM - Triac (Forward Phase, 120V only) dimming driver. (up to 5000 lumens)
 DMM - Dali Driver (up To 5000 Lumens)
 TWC - Tunable White Full Color 27k-65k, 90+ Cri With 0-10v Dual Control And 0.1% Dimming. (up to 2000 Lumens)
 TWW - Turnable White Warm Color 18k-40k, 90+ Cri With 0-10v Dual Control And 0.1% Dimming. (up to 2000 Lumens)
 DTW - Dim-to-Warm 18K-30K, 90CRI with 0-10V. (up to 5000 lumens)

HCR - High CRI, 90+ minimum. (Not available in 5000 Kelvin)
 PF - Polished Flange
 EM17 - Battery Backup W/remote Test Button & Indicator Light (for 800-5000 Lumen Luminaires)
 EM-CW-LED - Cold Weather Rated Emergency Driver
 GR-6-xx" - 8" Goof Ring (inner Dimension - Specify outer dimension In place of 'xx')
 GTD - Generator Transfer Device
 SENS DYOC - Daylight/occupancy Sensor - remote mount
 BRGESEN - Bridge up to 400 Watts for Sensdyoc

Vantage reserves the right to change components, finishes or design details in any manner which does not alter the installed appearance or reduce performance and intended function.

8" Round, Vandal Resistant F-Class Gen V - IC-RATED

Lensed, LED Downlight, 750-5000 Lumens

Dimensional Data

Ceiling Cut Out 7.75"

Above Ceiling Height
with 5/8" Ceiling

5.49" ≤ 3000L

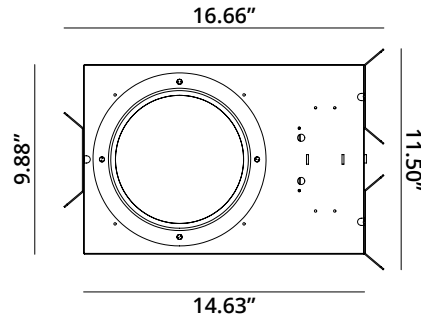
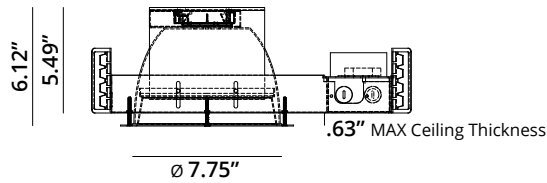
5.81" 4000L & 5000L

Above Ceiling Height
Max Ceiling Thickness

1.31" - 4.81"

Min Ceiling Thickness

0.25" - 5.87"



Reflector Finishes / Lens Options



SCL-1P
Clear Polycarbonate



SCL-1FRP
Frosted Polycarbonate



SCL-4P
Prismatic Acrylic



SGC-1P
Clear Polycarbonate



SGC-1FRP
Frosted Polycarbonate



SGC-4P
Prismatic Acrylic



WHT-1P
Clear Polycarbonate



WHT-1FRP
Frosted Polycarbonate



WHT-4P
Prismatic Acrylic

Photometry

VVRL8011 - 60° Medium Distribution

Model

VVRL8011-2035K-VVRL8011P-SCL

Lumens

1,579

Watts

27.2

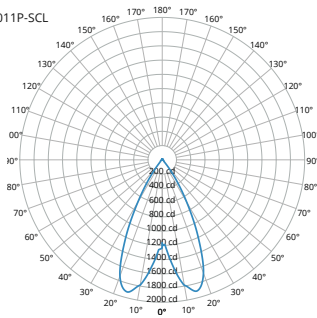
Efficiency

58.05

SC

1.07

Candela Curve



Cone of Light

Mounting Height AFF	FC at Center on Floor	Beam Diameter
8.0'	18 fc	8.2'
10.0'	12 fc	10.3'
12.0'	8 fc	12.3'
14.0'	6 fc	14.4'
16.0'	5 fc	16.4'
20.0'	3 fc	20.5'
24.0'	2 fc	24.6'
30.0'	1 fc	30.8'

Candela Table

	0.00°
0.00°	1,168
5.00°	1,439
10.00°	1,790
15.00°	1,904
20.00°	1,692
30.00°	691
40.00°	119
50.00°	29
60.00°	24
70.00°	16
80.00°	6
90.00°	6

Zonal Lumen Summary

Zone	Lumens	% Luminaire
0° - 30°	1,215	77%
0° - 40°	1,431	91%
0° - 60°	1,497	95%
60° - 90°	42	3%
0° - 20°	680	43%
20° - 50°	794	50%
50° - 70°	45	3%
70° - 90°	20	1%
0° - 90°	1,539	97%
90° - 180°	40	3%
Total	1,579	100%

Spacing Criterion

Height	Spacing	Light Level*
8 ft	8.6 ft	~ 18 fc
10 ft	10.7 ft	~ 12 fc
12 ft	12.8 ft	~ 8 fc
8 ft	6.4 ft	~ 32 fc
10 ft	8.0 ft	~ 21 fc
12 ft	9.6 ft	~ 14 fc
8 ft	4.3 ft	~ 73 fc
10 ft	5.4 ft	~ 47 fc
12 ft	6.4 ft	~ 32 fc

* approximate direct light level at floor based on spacing criterion overlap

MULTIPLIER

CRI	Multiplier	Kelvin	Multiplier	Reflector Finish	Multiplier
80	1	2700K	0.939	SCL	1
90	0.8	3000K	0.975	SGC	0.95
		3500K	1	WHT	0.87
		4000K	10.35		
		5000K	1.098		

Vantage reserves the right to change components, finishes or design details in any manner which does not alter the installed appearance or reduce performance and intended function.