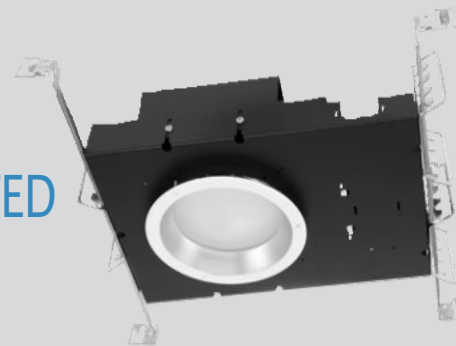


|                |                    |
|----------------|--------------------|
| <b>Part #</b>  | <b>Prepared By</b> |
| <b>Project</b> | <b>Notes</b>       |
| <b>Type</b>    |                    |
| <b>Date</b>    |                    |

# 6" Round, Vandal Resistant F-Class Gen V - IC-RATED

## Lensed, LED Downlight, 750-5000 Lumens



### Features & Specifications

#### ELECTRICAL SYSTEM

- 750 - 5000 lumens
- 2700K - 5000K CCT
- Optional Tunable White, 2700K - 6500K or 1800K - 4000K CCT
- 80 CRI with 3 SDCM color consistency (+90 CRI optional)
- Standard 0-10V 1% dimming driver, ZDM; optional drivers available
- 120V - 277V Universal Input Volts, 347V option
- Minimum 50,000 hour lifetime at L70
- -20°C to 30°C Ambient Operating Temperature Range

#### OPTICS

- Robust spun reflector with regressed lens
- Durable polycarbonate lens
- Optics & Trim secured with tamper-proof screws (proprietary screwdriver included)
- Reflector available in Alzak® and painted finishes; antimicrobial standard
- 60° Medium distribution
- Easy to clean

#### FRAME & MOUNTING

- Galvanized steel frame with integrated junction box featuring hinged access covers with spring retaining latches
- Vertically adjustable rigid formed mounting brackets that accept a variety of mounting bars with auxillary nail holes and T-bar slots
- T-Bars included, suitable for joist spacing from 12" to 24"
- Supports straight conduit runs - (3) 3/4" knockouts
- Through branch wiring - (8) #12 AWG (4 in, 4 out), 90°C conductors
- Accessibility to all LED components from below ceiling
- Flush to the ceiling reflectors, secured by high quality friction clips

### Listings

- ETL certified to UL 1598 and UL8750 requirements
- Tested according to LM-79 and LM-80 standards
- Energy Star® certified versions available (see Vantage Energy Star® guide for details)
- Suitable for damp locations under covered ceiling
- IC-Rated: insulation can be in direct contact with luminaire
- Optional IP65 dust and water protection below ceiling plane, in certain configurations
- Buy American Act (BAA)

### Warranty & Notes

- 5-year limited warranty on LED module and driver
- [www.vantageltg.com/product-warranty](http://www.vantageltg.com/product-warranty)
- Photometric tests performed by an accredited NVLP facility and in accordance to IESNA LM-79-2008 testing procedures

### Lumens\*

| Nominal Lumens | Delivered Lumens | Wattage | Lumens Per Watt |
|----------------|------------------|---------|-----------------|
| 750            | 614              | 9.4     | 65.32           |
| 1100           | 901              | 15.4    | 58.51           |
| 1500           | 1229             | 21.6    | 56.90           |
| 2000           | 1638             | 27.2    | 60.22           |
| 3000           | 2457             | 33.5    | 73.34           |
| 4000           | 3276             | 45.6    | 71.84           |
| 5000           | 4095             | 58.3    | 70.24           |

All measured at 3500K with a standard medium distribution  
\*Actual Wattage/Lumens may vary.

### Ordering Information

EXAMPLE: VVRL6011FRP-1130K-L6011FRP-SGC-ZDM

| Series       | Voltage  | Lumens   | Kelvin (CCT)   | Reflector/Lens*   | Finishes   | Options**   |
|--------------|--|--|--|---|--|---|
| VVRL60VEFLED | U - 120V-277V<br>1 - 120V<br>2 - 277V<br>3 - 347V<br>(347V Step Down Transformer)<br><br>*Must provide voltage when optional drivers are selected. | 07 - 750<br>11 - 1100<br>15 - 1500<br>20 - 2000<br>30 - 3000<br>40 - 4000<br>50 - 5000 | 27K - 2700K<br>30K - 3000K<br>35K - 3500K<br>40K - 4000K<br>50K - 5000K<br><br>TWC - Tunable White Full Color (2700K-6500K)*<br>TWW - Turnable White Warm Color (1800K-4000K)*<br>DTW - Dim-to-Warm (1800K-3000K)**<br><br>*Available up to 2000 lumens<br>**Available up to 5000 lumens | VVRL6011P<br>VVRL6011FRP<br>VVRL6014P<br>VVRL6012D 20°<br>VVRL6014D 40°<br>VVRL6016D 60°<br>VVRL6018D 80° | SCL<br>Specular Clear<br><br>SGC<br>Soft Glow Clear<br><br>WHT<br>White Matte<br><br>*All trims supplied standard with white painted flange. | ZDM<br>(standard)<br>DTD<br>DTDHL<br>DMX<br>DCA<br>TDM<br>DMM<br><br>HCR<br>PF<br>AT<br>EM17<br>EM-CW-LED<br>GR-6-xx"<br>GTD<br>SENSDYOC<br>BRGESEN<br>IP65 |

#### \*Lens Notes

VVRL6011P - Medium 60° Clear Polycarbonate Lensed Reflector  
VVRL6011FRP - Medium 60° Frosted Polycarbonate Lensed Reflector  
VVRL6014P - Medium 60° Prismatic Acrylic Lensed Reflector  
VVRL6012D - BeamShaper® Lens, 20° Beam Angle Reflector  
VVRL6014D - BeamShaper® Lens, 40° Beam Angle Reflector  
VVRL6016D - BeamShaper® Lens, 60° Beam Angle Reflector  
VVRL6018D - BeamShaper® Lens, 80° Beam Angle Reflector

#### \*\*Options Notes

ZDM - 0-10V 1% dimming driver (standard)  
DTD - 0-10V 0.1% dimming driver. (up to 4000 lumens)  
DTDHL - 0-10V 0.1% dimming driver. (use with 5000 - 7000 lumens)  
DMX - DMX with RDM dimming driver, requires DCA  
DCA - Daisy Chain Adaptor  
TDM - Triac (Forward Phase, 120V only) dimming driver. (up to 5000 lumens)  
DMM - Dali Driver (up To 5000 Lumens)  
TWC - Tunable White Full Color 27K-65K, 90+ Cri With 0-10v Dual Control And 0.1% Dimming. (up to 2000 Lumens)  
TWW - Turnable White Warm Color 18K-40K, 90+ Cri With 0-10v Dual Control And 0.1% Dimming. (up to 2000 Lumens)  
DTW - Dim-to-Warm 18K-30K, 90CRI with 0-10V. (up to 5000 lumens)

HCR - High CRI, 90+ minimum. (Not available in 5000 Kelvin)  
PF - Polished Flange  
EM17 - Battery Backup Wiremote Test Button & Indicator Light (for 800-5000 Lumen Luminaires)  
EM-CW-LED - Cold Weather Rated Emergency Driver  
GR-6-xx" - 6" Goof Ring (inner Dimension - Specify outer dimension In place of 'xx')  
GTD - Generator Transfer Device  
SENSDYOC - Daylight/occupancy Sensor - remote mount  
BRGESEN - Bridge up to 400 Watts for SENS DYOC  
IP65 - Requires lens EXCLUDING L6014 and L6014P

# 6" Round, Vandal Resistant F-Class Gen V - IC-RATED

Lensed, LED Downlight, 750-5000 Lumens

## Dimensional Data

Ceiling Cut Out 6.13"

Above Ceiling Height  
with 5/8" Ceiling

3.93" ± 3000L

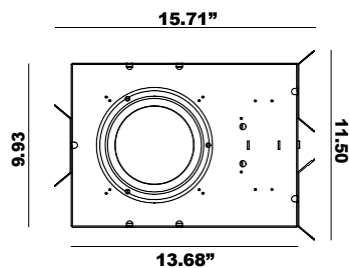
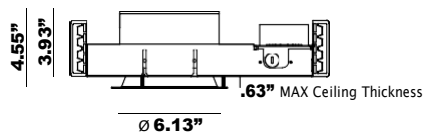
4.24" 4000L & 5000L

Above Ceiling Height  
Max Ceiling Thickness

1.10" - 3.45"

Min Ceiling Thickness

0.25" - 4.30"



## Reflector Finishes / Lens Options



**SCL-1P**  
Clear Polycarbonate



**SCL-1FRP**  
Frosted Polycarbonate



**SCL-4P**  
Prismatic Acrylic



**SGC-1P**  
Clear Polycarbonate



**SGC-1FRP**  
Frosted Polycarbonate



**SGC-4P**  
Prismatic Acrylic



**WHT-1P**  
Clear Polycarbonate



**WHT-1FRP**  
Frosted Polycarbonate



**WHT-4P**  
Prismatic Acrylic

## Photometry

VVR6011 - 60° Medium Distribution

Model

Candela Curve

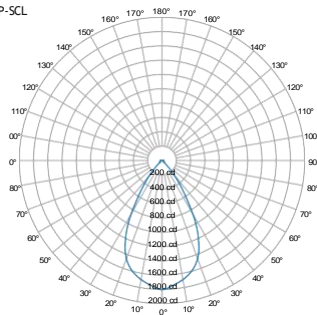
VVR6VEFLEDU-2035K-VVR6011P-SCL

Lumens  
1,638

Watts  
27.2

Efficiency  
60.22

SC  
0.92



Cone of Light

| Mounting Height AFF | FC at Center on Floor | Beam Diameter |
|---------------------|-----------------------|---------------|
| 8.0 ' 1             | 28 fc                 | 9.1 ' 1       |
| 10.0 ' 1            | 18 fc                 | 11.3 ' 1      |
| 12.0 ' 1            | 13 fc                 | 13.6 ' 1      |
| 14.0 ' 1            | 9 fc                  | 15.9 ' 1      |
| 16.0 ' 1            | 7 fc                  | 18.1 ' 1      |
| 20.0 ' 1            | 5 fc                  | 22.7 ' 1      |
| 24.0 ' 1            | 3 fc                  | 27.2 ' 1      |
| 30.0 ' 1            | 2 fc                  | 34.0 ' 1      |

Candela Table

|        | 0.00° |
|--------|-------|
| 0.00°  | 1,802 |
| 5.00°  | 1,751 |
| 10.00° | 1,689 |
| 15.00° | 1,601 |
| 20.00° | 1,458 |
| 30.00° | 863   |
| 40.00° | 263   |
| 50.00° | 38    |
| 60.00° | 26    |
| 70.00° | 22    |
| 80.00° | 0     |
| 90.00° | 0     |

Zonal Lumen Summary

| Zone       | Lumens | % Luminaire |
|------------|--------|-------------|
| 0° - 30°   | 1,157  | 71%         |
| 0° - 40°   | 1,482  | 90%         |
| 0° - 60°   | 1,597  | 98%         |
| 60° - 90°  | 41     | 2%          |
| 0° - 20°   | 613    | 37%         |
| 20° - 50°  | 957    | 58%         |
| 50° - 70°  | 52     | 3%          |
| 70° - 90°  | 16     | 1%          |
| 0° - 90°   | 1,638  | 100%        |
| 90° - 180° | 0      | 0%          |
| Total      | 1,638  | 100%        |

Spacing Criterion

| Height | Spacing | Light Level* |
|--------|---------|--------------|
| 8 ft   | 7.4 ft  | ~ 28 fc      |
| 10 ft  | 9.2 ft  | ~ 18 fc      |
| 12 ft  | 11.0 ft | ~ 13 fc      |
| 8 ft   | 5.5 ft  | ~ 50 fc      |
| 10 ft  | 6.9 ft  | ~ 32 fc      |
| 12 ft  | 8.3 ft  | ~ 22 fc      |
| 8 ft   | 3.7 ft  | ~ 113 fc     |
| 10 ft  | 4.6 ft  | ~ 72 fc      |
| 12 ft  | 5.5 ft  | ~ 50 fc      |

\* approximate direct light level at floor based on spacing criterion overlap

## MULTIPLIER

| CRI | Multiplier | Kelvin | Multiplier | Reflector Finish | Multiplier |
|-----|------------|--------|------------|------------------|------------|
| 80  | 1          | 2700K  | 0.939      | SCL              | 1          |
| 90  | 0.8        | 3000K  | 0.975      | SGC              | 0.95       |
|     |            | 3500K  | 1          | WHT              | 0.87       |
|     |            | 4000K  | 10.35      |                  |            |
|     |            | 5000K  | 1.098      |                  |            |

Vantage reserves the right to change components, finishes or design details in any manner which does not alter the installed appearance or reduce performance and intended function.