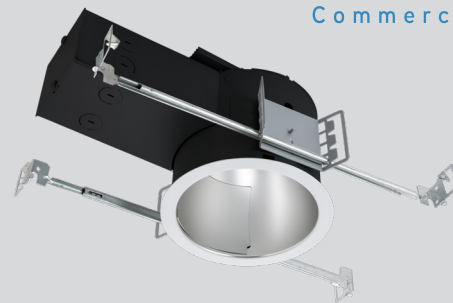


Part #	Prepared By
Project	Notes
Type	
Date	

6" Round, F-Class Commercial IC-RATED

Open, LED Wall Wash, 750-2000 Lumens



Description

F-Class Commercial downlights are designed to provide premium features at a commercial value. The Open Wall Wash precision spun reflector provides a wall wash distribution and sharp light cutoff. Standard 0-10V 10% dimming driver; optional drivers available. IC-Rated housing can be in direct contact with insulation.

Features & Construction

ELECTRICAL SYSTEM

- 750 - 2000 lumens
- 2700K - 5000K CCT
- 80 CRI with 3 SDCM color consistency (+90 CRI optional)
- Standard 0-10V 10% dimming driver; optional drivers available
- 120V - 277V
- Minimum 50,000 hour lifetime at L70
- -20°C to 30°C Ambient Operating Temperature Range

OPTICS

- Precision spun reflector with integrated 'kicker plate'
- Reflectors available in Alzak® and painted finishes
- Distribution is free of streaks, striations and hotspots
- Medium distribution
- 45° Cutoff

FRAME & MOUNTING

- Adjustable mounting ears and junction box included
- Mounting ears accept standard hanger bars 14" - 24" (included)
- Knock outs for through wiring
- US cold-rolled steel housing

Listings

- ETL certified to UL 1598 and UL8750 requirements
- Tested according to LM-79 and LM-80 standards
- Suitable for damp locations; Wet location under covered ceiling
- IC-Rated: insulation can be in direct contact with luminaire
- Buy American Act

Warranty & Notes

- 5-year limited warranty on LED module and driver
- www.vantageltg.com/product-warranty
- Photometric tests performed by an accredited NVLP facility and in accordance to IESNA LM-79-2008 testing procedures

Lumens

Nominal Lumens	Delivered Lumens	Wattage	Lumens Per Watt
750	746	9.4	79.36
1100	1094	15.4	71.04
1500	1492	21.6	69.07
2000	1989	26.07	76.29

All measured at 3500K with a standard medium distribution
*Actual Wattage/Lumens may vary.

Ordering Information

EXAMPLE: VIC6OFCRWW1-0735K-F6160-SGC-HCR

		-			-		-		
Series	Voltage		Lumens	Kelvin (CCT)	Reflector	Reflector Finish		Options*	
VIC6OFCRWW	U - 120V-277V* *Universal Voltage only available with ZDM-1% Driver. 1 - 120V** 2 - 277V** **Must specify voltage when standard SDM 10% is selected. TDM (triac) is 120V only.		07 - 750 11 - 1100 15 - 1500 20 - 2000	27K - 2700K 30K - 3000K 35K - 3500K 40K - 4000K 50K - 5000K	F6160 Wall Wash Open Reflector	SCL Specular Clear SGC Soft Glow Clear WHT White Matte *All trims supplied standard with white painted flange.		SDM ZDM TDM HCR PF REM	

*Options Notes

SDM - 0-10V 10% dimming driver (standard, Must Specify Voltage as 120V or 277V)
 ZDM - 0-10V 1% dimming driver (Universal Voltage).
 TDM - Triac (Forward Phase, 120V only) dimming driver.
 HCR - High CRI, 90+ minimum. Not available in 5000 Kelvin.
 PF - Polished Flange
 REM - Emergency battery back-up. Remote test button & indicator light.

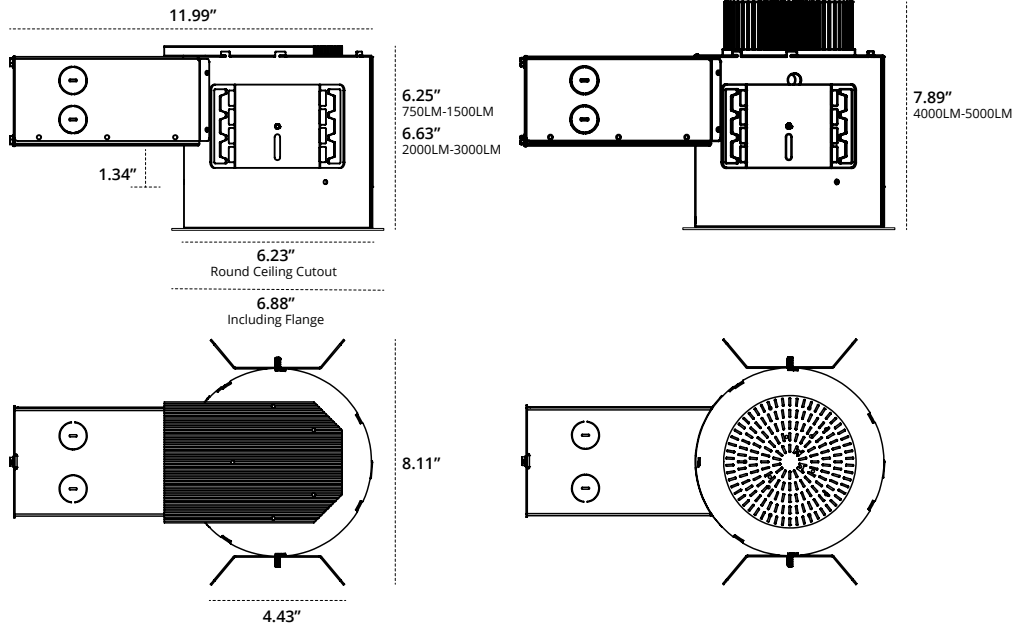
6" Round, F-Class Commercial IC-RATED

Open, LED Wall Wash, 750-2000 Lumens

F-CLASS
Commercial

Dimensional Data

New Construction



WALL WASH - WW 2035K

Model
VIC6OFCRWW-2035K-F6160-SCL

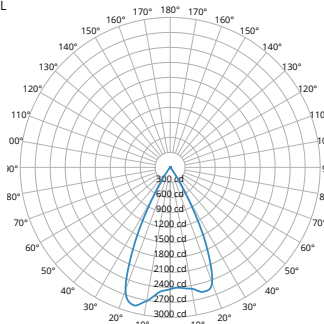
Lumens
1,989

Watts
26.07

Efficacy
76.29

SC
0.93

Candela Curve



Cone of Light

Mounting Height AFF	FC at Center on Floor	Beam Diameter
8.0 '	38 fc	7.9 '
10.0 '	24 fc	9.9 '
12.0 '	17 fc	11.8 '
14.0 '	12 fc	13.8 '
16.0 '	10 fc	15.8 '
20.0 '	6 fc	19.7 '
24.0 '	4 fc	23.7 '
30.0 '	3 fc	29.6 '

Candela Table

	0.00°
0.00°	2,438
5.00°	2,420
10.00°	2,464
15.00°	2,575
20.00°	2,450
30.00°	720
40.00°	38
50.00°	14
60.00°	9
70.00°	7
80.00°	6
90.00°	5

Zonal Lumen Summary

Zone	Lumens	% Luminaire
0° - 30°	1,705	86%
0° - 40°	1,881	95%
0° - 60°	1,922	97%
60° - 90°	20	1%
0° - 20°	986	50%
20° - 50°	923	47%
50° - 70°	21	1%
70° - 90°	12	1%
0° - 90°	1,941	98%
90° - 180°	34	2%
Total	1,975	100%

Spacing Criterion

Height	Spacing	Light Level*
8 ft	7.4 ft	~ 38 fc
10 ft	9.3 ft	~ 24 fc
12 ft	11.2 ft	~ 17 fc
8 ft	5.6 ft	~ 68 fc
10 ft	7.0 ft	~ 43 fc
12 ft	8.4 ft	~ 30 fc
8 ft	3.7 ft	~ 152 fc
10 ft	4.7 ft	~ 98 fc
12 ft	5.6 ft	~ 68 fc

* approximate direct light level at floor based on spacing criterion overlap

MULTIPLIER

CRI	Multiplier	Kelvin	Multiplier	Reflector Finish	Multiplier
80	1	2700K	0.939	SCL	1
90	0.81	3000K	0.975	SGC	0.95
		3500K	1	WHT	0.87
		4000K	1.035		
		5000K	1.098		

Vantage reserves the right to change components, finishes or design details in any manner which does not alter the installed appearance or reduce performance and intended function.