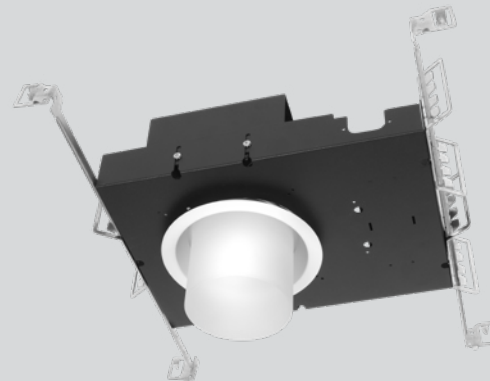


Part #	Prepared By
Project	Notes
Type	
Date	

6" Luna Round, F-Class Gen V - IC-Rated

Decorative, LED Downlight, 750-5000 Lumens



Features & Specifications

ELECTRICAL SYSTEM

- 750 - 5000 lumens
- 2700K - 5000K CCT
- Optional Tunable White, 2700K - 6500K or 1800K - 4000K CCT
- 80 CRI with 3 SDCM color consistency (+90 CRI optional)
- Standard 0-10V 1% dimming driver, ZDM; optional drivers available
- 120V - 277V Universal Input Volts, 347V option
- Minimum 50,000 hour lifetime at L70
- -20°C to 30°C Ambient Operating Temperature Range

OPTICS

- Precision spun architectural-grade reflector with Luna decorative element
- Polycarbonate decorative element to reduce breakage potential
- Reflectors available in Alzak® and painted finishes
- 40° Medium distribution

FRAME & MOUNTING

- Galvanized steel frame with integrated junction box featuring hinged access covers with spring retaining latches
- Vertically adjustable rigid formed mounting brackets that accept a variety of mounting bars with auxillary nail holes and T-bar slots
- T-Bars included, suitable for joist spacing from 12" to 24"
- Supports straight conduit runs - (3) 3/4" knockouts
- Through branch wiring - (8) #12 AWG (4 in, 4 out), 90°C conductors
- Accessibility to all LED components from below ceiling
- Flush to the ceiling reflectors, secured by high quality friction clips

Listings

- ETL certified to UL 1598 and UL8750 requirements
- Tested according to LM-79 and LM-80 standards
- Energy Star® certified versions available (see Vantage Energy Star® guide for details)
- Suitable for damp locations under covered ceiling
- IC-Rated: insulation can be in direct contact with luminaire
- Buy American Act (BAA)

Warranty & Notes

- 5-year limited warranty on LED module and driver
- www.vantageltg.com/product-warranty
- Photometric tests performed by an accredited NVLP facility and in accordance to IESNA LM-79-2008 testing procedures

Lumens*

Nominal Lumens	Wattage
750	9.4
1100	15.4
1500	21.6
2000	9.44
3000	33.5
4000	45.6
5000	60.1
6000	58.5
7000	85.3

All measured at 3500K with a standard medium distribution
**Actual Wattage/Lumens may vary.*

Ordering Information

EXAMPLE: VGC6VEFLEDU-1130K-LVGC621-200-SGC-ZDM

Series	Voltage	Lumens	Kelvin (CCT)	Reflector	Finishes	Options**	
VGC6VEFLED	U - 120V-277V 1 - 120V 2 - 277V 3 - 347V (347V Step Down Transformer) *Must provide voltage when optional drivers are selected.	07 - 750 11 - 1100 15 - 1500 20 - 2000 30 - 3000 40 - 4000 50 - 5000	27K - 2700K 30K - 3000K 35K - 3500K 40K - 4000K 50K - 5000K TWC - Tunable White Full Color (2700K-6500K)* TWW - Turnable White Warm Color (1800K-4000K)* DTW - Dim-to-Warm (1800K-3000K)** *Available up to 2000 lumens **Available up to 5000 lumens	LVGC621-200 40° Luna Decorative Reflector	SCL Specular Clear SGC Soft Glow Clear WHT White Matte *All trims supplied standard with white painted flange.	ZDM (standard) DTD DTDHL DMX DCA TDM DMM	HCR PF EM17 EM-CW-LED GR-6-"xx" GTD SENSDYOC BRGESEN

**Options Notes

ZDM - 0-10V 1% dimming driver (standard)
 DTD - 0-10V 0.1% dimming driver. (up to 4000 lumens)
 DTDHL - 0-10V 0.1% dimming driver. (use with 5000 - 7000 lumens)
 DMX - DMX with RDM dimming driver, requires DCA
 DCA - Daisy Chain Adaptor
 TDM - Triac (Forward Phase, 120V only) dimming driver. (up to 5000 lumens)
 DMM - Dali Driver (up To 5000 Lumens)
 TWC - Tunable White Full Color 27k-65k, 90+ Cri With 0-10v Dual Control And 0.1% Dimming. (up to 2000 Lumens)
 TWW - Turnable White Warm Color 18k-40k, 90+ Cri With 0-10v Dual Control And 0.1% Dimming. (up to 2000 Lumens)
 DTW - Dim-to-Warm 18K-30K, 90CRI with 0-10V. (up to 5000 lumens)
 HCR - High CRI, 90+ minimum. (Not available in 5000 Kelvin)
 PF - Polished Flange
 EM17 - Battery Backup W/remote Test Button & Indicator Light (for 800-5000 Lumen Luminaires)

EM-CW-LED - Cold Weather Rated Emergency Driver
 GR-6-"xx" - 6" Goof Ring (inner Dimension - Specify outer dimension In place of 'xx')
 GTD - Generator Transfer Device
 SENS DYOC - Daylight/occupancy Sensor - remote mount
 BRGESEN - Bridge up to 400 Watts for Sensdyoc

Vantage reserves the right to change components, finishes or design details in any manner which does not alter the installed appearance or reduce performance and intended function.

6" Luna Round, F-Class Gen V - IC-Rated

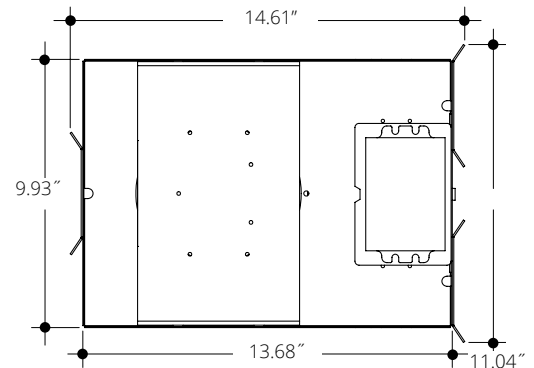
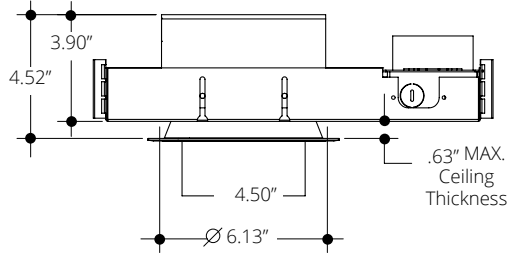
Decorative, LED Downlight, 750-5000 Lumens

Dimensional Data

Ceiling Cut Out 6.13"

Above Ceiling Height
with 5/8" Ceiling
3.90" ≤ 3000L
4.21" 4000L & 5000L

Above Ceiling Height
• Max Ceiling Thickness
1.08" - 3.45"
• Min Ceiling Thickness
0.22" - 4.31"



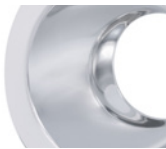
Reflector Finishes



WHT
White Matte



SGC
Soft Glow Clear



SCL
Specular Clear

Photometry

LVGC621 - 40° Medium Distribution

Model VGC6VFLEDU-2035K-LVGC621-200-SCL

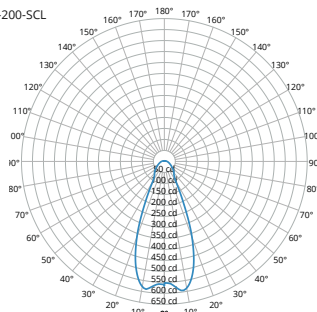
Lumens
519

Watts
9.44

Efficacy
54.98

SC
0.75

Candela Curve



Cone of Light

Mounting Height AFF	FC at Center on Floor	Beam Diameter
8.0 ' 1	9 fc	6.4 ' 1
10.0 ' 1	6 fc	8.0 ' 1
12.0 ' 1	4 fc	9.6 ' 1
14.0 ' 1	3 fc	11.2 ' 1
16.0 ' 1	2 fc	12.8 ' 1
20.0 ' 1	1 fc	16.0 ' 1
24.0 ' 1	1 fc	19.2 ' 1
30.0 ' 1	1 fc	24.0 ' 1

Candela Table

	0.00°
0.00°	566
5.00°	573
10.00°	585
15.00°	508
20.00°	368
30.00°	103
40.00°	68
50.00°	50
60.00°	34
70.00°	24
80.00°	17
90.00°	12

Zonal Lumen Summary

Zone	Lumens	% Luminaire
0° - 30°	288	55%
0° - 40°	338	65%
0° - 60°	421	81%
60° - 90°	67	13%
0° - 20°	192	37%
20° - 50°	192	37%
50° - 70°	66	13%
70° - 90°	38	7%
0° - 90°	488	94%
90° - 180°	30	6%
Total	519	100%

Spacing Criterion

Height	Spacing	Light Level*
8 ft	6.0 ft	~ 9 fc
10 ft	7.5 ft	~ 6 fc
12 ft	9.0 ft	~ 4 fc
8 ft	4.5 ft	~ 16 fc
10 ft	5.6 ft	~ 10 fc
12 ft	6.8 ft	~ 7 fc
8 ft	3.0 ft	~ 35 fc
10 ft	3.8 ft	~ 23 fc
12 ft	4.5 ft	~ 16 fc

* approximate direct light level at floor based on spacing criterion overlap

MULTIPLIER

CRI	Multiplier	Kelvin	Multiplier	Reflector Finish	Multiplier
80	1	2700K	0.939	SCL	1
90	0.8	3000K	0.975	SGC	0.95
		3500K	1	WHT	0.87
		4000K	1.035		
		5000K	1.098		

Vantage reserves the right to change components, finishes or design details in any manner which does not alter the installed appearance or reduce performance and intended function.