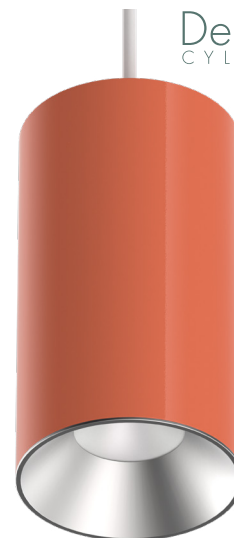


Part #	Prepared By
Project	Notes
Type	
Date	

# 8" DecoLine® Cylinder

Regressed Lens, LED Cylinder, 700-6000 Lumens



## DESCRIPTION

DecoLine® architectural LED cylinders can be personalized with 25 standard interchangeable finish options. Mounting options include Surface Mount, Pendant Mount, Cord & Cable Mount and Wall Mount. Available with Narrow, Medium, Wide or Extra Wide optical distributions, DecoLine® cylinders are designed for general, accent and task lighting applications. Multiple dimming driver options are available for your specific design needs.

## FEATURES

- 25 interchangeable finish options
- Additional Specular Clear & Soft Glow Clear Reflector finish options
- 3-Stage Beamshaper® optic to provide precise beam control & soft luminance
- 4 distribution options: Narrow, Medium, Wide & Extra Wide
- Surface, Wall, Pendant and Cord & Cable Mounting options
- 700, 1100, 1500, 2000, 3000, 4000, 5000 and 6000 Lumen Packages
- 2700K, 3000K, 3500K, 4000K & Dim-to-Warm (3000K-1800K) CCT options
- 80+ CRI Standard, 90+ CRI Option
- 3-Step SDCM
- Standard 0-10V 1% dimming driver (located in luminaire)
- Optional 0-10V 0.1%, Triac, Dali, DMX with RDM and Lutron dimming drivers (located in canopy)

## LISTINGS

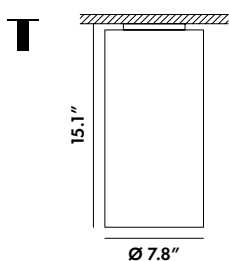
- ETL certified to UL 1598 and UL8750 requirements
- Tested according to LM-79 and LM-80 standards
- Suitable for damp locations; Wet location under covered ceiling
- Buy American Act

## WARRANTY & NOTES

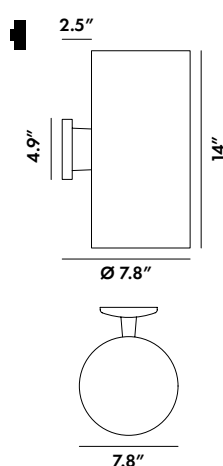
- 5-year limited warranty on LED module and driver
- [www.vantageltg.com/product-warranty](http://www.vantageltg.com/product-warranty)
- Photometric tests performed by an accredited NVLP facility and in accordance to IESNA LM-79-2008 testing procedures

## MOUNTING SOLUTIONS

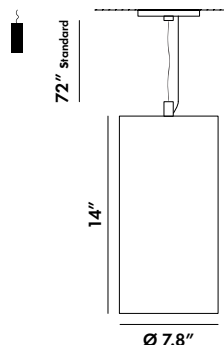
### SM - SURFACE MOUNT



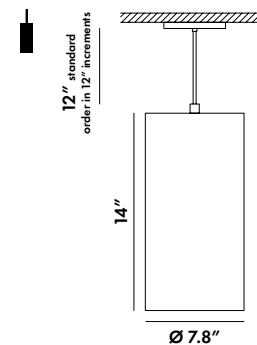
### WM - WALL MOUNT



### CCK - CORD & CABLE MOUNT



### PM - PENDANT MOUNT



## MOUNTING NOTES

**PM** - 3/8" IP x 12" rigid stem with fixed canopy (standard). Swivel canopy (PM-SWC) available to accommodate sloped ceilings up to 45°.

Standard Pendant lengths (stem): 12", 24", and 36". If a different length is desired, please specify in 12" increments and add a field cut kit to the order.

**CCK** - 72" 5 conductor cord to support 0-10V dimming (standard). Other lengths available. Requires large canopy when paired with REM (Remote Emergency Battery)

**Optional Drivers** - Requires larger canopy, see canopy details for more information.

# 8" DecoLine® Cylinder

Regressed Lens, LED Cylinder, 700-6000 Lumens

DecoLine®  
CYLINDERS

## ORDERING INFORMATION

EXAMPLE: VDL814CMU-3035K-NW-HBL-BLK-BLK-DTD-PM(24)

			-			-			-			-			-			-		
1	2	3		4	5		6	7		8	9		10		11		12			

### Additional Notes

1	2	3	4	5	6
Size	Mounting Option	Voltage	Lumens	Kelvin	Beamshaper®
VDL814 - 8"x14"	SM - Surface Mount WM - Wall Mount CCK - Cord & Cable Mount PM - Pendant Mount	U - Universal (120 - 277V) 1 - 120V 2 - 277V  *Must provide voltage when optional drivers are selected.	07 - 700 11 - 1100 15 - 1500 20 - 2000 30 - 3000 40 - 4000 50 - 5000 60 - 6000	27K - 2700 Kelvin 30K - 3000 Kelvin 35K - 3500 Kelvin 40K - 4000 Kelvin DTW - Dim-to-Warm* (3000 - 1800 Kelvin)	NW - Narrow 15° MD - Medium 30° WE - Wide 45° XW - Extra Wide 72°
7	8	9	10		
Reflector Finish	Housing Finish	Cord/Stem Finish	Canopy Finish		
ACR BLB BLK BLS BRD BVT BZ CS DEU HBL MCL PBK PCL PVT	RBE RVT SOR SPK SSG TPG TRQ WHC WHG WHT SCL SGC CC-RAL( )*	ACR BLB BLK BLS BRD BVT BZ CS DEU HBL MCL PBK	PCL PVT RBE RVT SOR SPK SSG TPG TRQ WHC WHG WHT CC-RAL( )*		
11	12				
Driver Options*	Additional Options**				
DTD DTMHL TDM TDMHL DDM DMX DL-2 LDE1 PEQ0	HCR REM REMHL CCK-( ) PM-( ) PM-SWC DCA				

## NOTES

**DTW** - Dim-to-Warm (3000 - 1800 Kelvin), Not available above 2000 lumens, Requires larger canopy  
**Cord Finish** - Cord finish options only available in CBLK, CGRY, CWHT  
**CC-RAL( )** - Must supply RAL number when submitting order, custom color charge applies  
**Color Swatches** - See P.5 for color swatches

## \*DRIVER OPTIONS NOTES

**Optional Drivers** - Require larger canopy, see canopy details for more information  
**DTD** - 0-10V 0.1% dimming driver. 4000 Lumens and below.  
**DTDHL** - 0-10V 0.1% dimming driver. 5000-7000 Lumens.  
**TDM** - Triac (Forward Phase, 120V only) dimming driver. 5000 Lumens and below.  
**TDMHL** - Triac (Forward Phase, 120V only) dimming driver. 6000 Lumens.  
**DDM** - Dali dimming driver. Not available above 5000 lumens.  
**DMX** - DMX with RDM dimming driver. Must Include Daisy Chain Adaptor.  
**DL-2** - Lutron 2-Wire Hi-Lume dimming driver. Not available above 3000 lumens.  
**DL-3** - Lutron 3-Wire Hi-Lume dimming driver. Not available above 3000 lumens.  
**LDE1** - Lutron Hi-Lume 1% with Soft-On, Fade-to-Black dimming driver. Not available above 4000 lumens.  
**PEQ0** - Lutron Hi-Lume Premier 0.1% with Soft-On, Fade-to-Black dimming driver. Not available above 4000 lumens.

## \*\*ADDITIONAL OPTIONS NOTES

**HCR** - 90+ CRI min.  
**REM** - Remote Emergency Battery Backup. Not available above 4000 lumens.  
**REMHL** - Remote Emergency Battery Backup HiLumen. Not available below 5000 lumens.  
**CCK-( )** - Specify length of Cord & Cable Mount  
**PM-( )** - Specify length of Pendant Mount  
**PM-SWC** - Swivel Canopy 1/4" IP x12" rigid stem with swivel canopy for mounting on sloped ceilings up to 45°  
**DCA** - DMX Daisy Chain Adaptor

## LUMENS

Nominal Lumens	Delivered Lumens	Wattage	Lumens Per Watt
700	650	7.28	89.29
1100	1022	11.44	89.34
1500	1393	15.6	89.29
2000	1857	20.8	89.29
3000	2786	31.2	89.29
4000	3715	41.6	89.30
5000	4643	52	89.29
6000	5572	62.4	89.29

All measured at 3500K with a standard medium distribution  
\*Actual Wattage/Lumens may vary.

DecoLine® is a registered trademark of Lexington Lighting Group, LLC dba Vantage Lighting

Vantage reserves the right to change components, finishes or design details in any manner which does not alter the installed appearance or reduce performance and intended function.

PHOTOMETRY

NW - Narrow 15°

Model

VDL814-XX-4035K-NW

Lumens

3490

Watts

41.73

Efficacy

83.63

SC

0.27

Candela Curve

Cone of Light

Mounting Height AFF	FC at Center on Floor	Beam Diameter
8.0 ft	221 fc	2.3 ft
10.0 ft	141 fc	2.8 ft
12.0 ft	98 fc	3.4 ft
14.0 ft	72 fc	4.0 ft
16.0 ft	55 fc	4.5 ft
20.0 ft	35 fc	5.7 ft
24.0 ft	25 fc	6.8 ft
30.0 ft	16 fc	8.5 ft

Candela Table

	0°
0°	14132
5°	9531
10°	5497
15°	3978
20°	2847
30°	1449
40°	109
50°	67
60°	105
70°	51
80°	24
90°	0

Zonal Lumen Summary

Zone	Lumens	% Luminaire
0° - 30°	2836	81%
0° - 40°	3190	91%
0° - 60°	3364	96%
60° - 90°	126	4%
0° - 20°	1894	54%
20° - 50°	1357	39%
50° - 70°	176	5%
70° - 90°	62	2%
Downlight	3490	100%
Uplight	0	0%
Total	3490	100%

Spacing Criterion

Height	Spacing	Light Level*
8 ft	2.2 ft	~ 221 fc
10 ft	2.7 ft	~ 141 fc
12 ft	3.2 ft	~ 98 fc
8 ft	1.6 ft	~ 393 fc
10 ft	2.0 ft	~ 251 fc
12 ft	2.4 ft	~ 174 fc
8 ft	1.1 ft	~ 883 fc
10 ft	1.4 ft	~ 565 fc
12 ft	1.6 ft	~ 393 fc

\* approximate direct light level at floor based on spacing criterion overlap

MD - Medium 30°

Model

VDL814-XX-4035K-MD

Lumens

3715

Watts

41.6

Efficacy

89.30

SC

0.5

Candela Curve

Cone of Light

Mounting Height AFF	FC at Center on Floor	Beam Diameter
8.0 ft	140 fc	4.3 ft
10.0 ft	89 fc	5.4 ft
12.0 ft	62 fc	6.4 ft
14.0 ft	46 fc	7.5 ft
16.0 ft	35 fc	8.6 ft
20.0 ft	22 fc	10.7 ft
24.0 ft	16 fc	12.9 ft
30.0 ft	10 fc	16.1 ft

Candela Table

	0°
0°	8930
5°	8334
10°	6991
15°	4474
20°	3296
30°	1612
40°	115
50°	38
60°	32
70°	28
80°	11
90°	0

Zonal Lumen Summary

Zone	Lumens	% Luminaire
0° - 30°	3182	86%
0° - 40°	3577	96%
0° - 60°	3656	98%
60° - 90°	59	2%
0° - 20°	2061	55%
20° - 50°	1564	42%
50° - 70°	61	2%
70° - 90°	29	1%
Downlight	3715	100%
Uplight	0	0%
Total	3715	100%

Spacing Criterion

Height	Spacing	Light Level*
8 ft	4.0 ft	~ 140 fc
10 ft	5.0 ft	~ 89 fc
12 ft	6.0 ft	~ 62 fc
8 ft	3.0 ft	~ 248 fc
10 ft	3.8 ft	~ 159 fc
12 ft	4.5 ft	~ 110 fc
8 ft	2.0 ft	~ 558 fc
10 ft	2.5 ft	~ 357 fc
12 ft	3.0 ft	~ 248 fc

\* approximate direct light level at floor based on spacing criterion overlap

WE - Wide 45°

Model

VDL814-XX-4035K-WE

Lumens

3745

Watts

41.57

Efficacy

90.09

SC

0.72

Candela Curve

Cone of Light

Mounting Height AFF	FC at Center on Floor	Beam Diameter
8.0 ft	95 fc	6.9 ft
10.0 ft	61 fc	8.6 ft
12.0 ft	42 fc	10.3 ft
14.0 ft	31 fc	12.0 ft
16.0 ft	24 fc	13.7 ft
20.0 ft	15 fc	17.2 ft
24.0 ft	11 fc	20.6 ft
30.0 ft	7 fc	25.7 ft

Candela Table

	0°
0°	6078
5°	5813
10°	5184
15°	4432
20°	3621
30°	1781
40°	410
50°	23
60°	16
70°	16
80°	11
90°	0

Zonal Lumen Summary

Zone	Lumens	% Luminaire
0° - 30°	2988	80%
0° - 40°	3596	96%
0° - 60°	3705	99%
60° - 90°	39	1%
0° - 20°	1776	47%
20° - 50°	1912	51%
50° - 70°	33	1%
70° - 90°	24	1%
Downlight	3745	100%
Uplight	0	0%
Total	3745	100%

Spacing Criterion

Height	Spacing	Light Level*
8 ft	5.8 ft	~ 95 fc
10 ft	7.2 ft	~ 61 fc
12 ft	8.6 ft	~ 42 fc
8 ft	4.3 ft	~ 169 fc
10 ft	5.4 ft	~ 108 fc
12 ft	6.5 ft	~ 75 fc
8 ft	2.9 ft	~ 380 fc
10 ft	3.6 ft	~ 243 fc
12 ft	4.3 ft	~ 169 fc

\* approximate direct light level at floor based on spacing criterion overlap

XW - Extra Wide 72°

Model

VDL814-xx-2035K-XW

Lumens

1285

Watts

20.72

Efficacy

62.02

SC

1.05

Candela Curve

Cone of Light

Mounting Height AFF	FC at Center on Floor	Beam Diameter
8.0 ft	11 fc	14.4 ft
10.0 ft	7 fc	17.9 ft
12.0 ft	5 fc	21.5 ft
14.0 ft	4 fc	25.1 ft
16.0 ft	3 fc	28.7 ft
20.0 ft	2 fc	35.9 ft
24.0 ft	1 fc	43.1 ft
30.0 ft	1 fc	53.8 ft

Candela Table

	0°
0°	707
5°	696
10°	671
15°	635
20°	592
30°	488
40°	377
50°	252
60°	137
70°	43
80°	5
90°	0

Zonal Lumen Summary

Zone	Luminous flux (lm)	% Luminaire
0° - 30°	495	38%
0° - 40°	764	59%
0° - 60°	1177	92%
60° - 90°	108	8%
0° - 20°	247	19%
20° - 50°	758	59%
50° - 70°	258	20%
70° - 90°	21	2%
Downlight	1285	100%
Uplight	0	0%
Total	1285	100%

Spacing Criterion

Height	Spacing	Light Level*
8 ft	8.4 ft	~ 11 fc
10 ft	10.5 ft	~ 7 fc
12 ft	12.6 ft	~ 5 fc
8 ft	6.3 ft	~ 20 fc
10 ft	7.9 ft	~ 13 fc
12 ft	9.5 ft	~ 9 fc
8 ft	4.2 ft	~ 44 fc
10 ft	5.3 ft	~ 28 fc
12 ft	6.3 ft	~ 20 fc

\* approximate direct light level at floor based on spacing criterion overlap

# 8" DecoLine® Cylinder

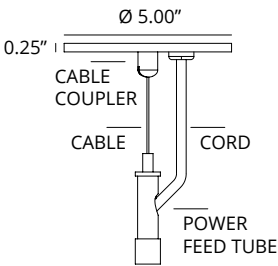
Regressed Lens, LED Cylinder, 700-6000 Lumens



## CANOPY DETAILS

### CCK

Cord & Cable Mount, fixed canopy (standard)

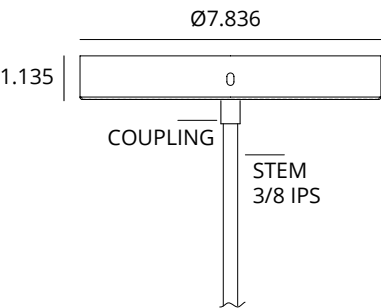


#### Driver Compatibility

Standard 0-10V 1%

### PM

Pendant Mount, rigid stem, fixed canopy (standard)

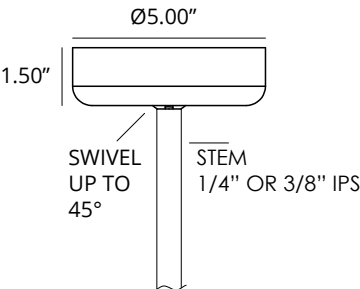


#### Driver Compatibility

Standard 0-10V 1%

### PM-SWC

Pendant Mount, rigid stem, swivel canopy, up to 45° slope ceiling (optional)

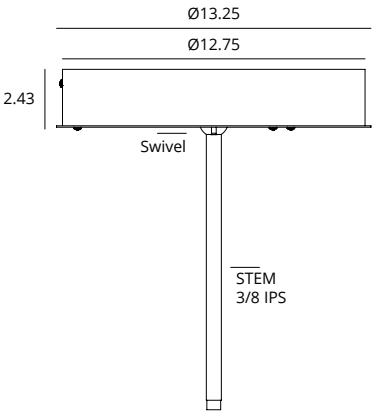


#### Driver Compatibility

Standard 0-10V 1%

### OPTIONAL DRIVERS

Canopy for larger driver options. Driver located in canopy.



#### Driver Compatibility

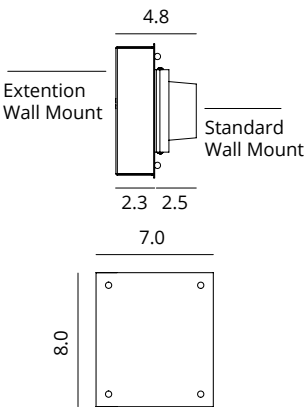
DTD  
DTDHL  
TDM  
TDMHL  
DDM  
DMX  
DL-2  
DL-3  
LDE1  
PEQ0

DTW - Dim-to-Warm

Available as  
CCK, PM-RGC & PM-SWC  
Large canopy required when  
CCK is paired with REM

### WALL MOUNT EXTENSION

Wall Mount Extension for larger optional drivers



#### Driver Compatibility

DTD  
DTDHL  
TDM  
TDMHL  
DDM  
DMX  
DL-2  
DL-3  
LDE1  
PEQ0

DTW - Dim-to-Warm

# 8" DecoLine® Cylinder

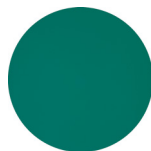
Regressed Lens, LED Cylinder, 700-6000 Lumens

DecoLine®  
CYLINDERS

## 25 STANDARD FINISHES



RBE - ROBIN EGG



TRQ - TURQUOISE



DEU - DARK EUCALYPTUS



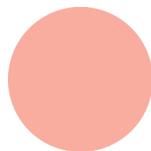
HBL - HYDRANGEA BLUE



BLB - BLUE BIRD



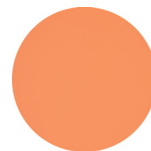
BRD - BORDEAUX RED



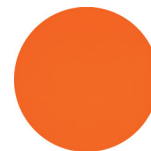
PCL - PINK CORAL



SPK - SUBTLE PINK



SOR - SALMON ORANGE



SSG - SUNSET ORANGE



RVT - RED VELVET



PVT - PURPLE VELVET



BVT - BLUE VELVET



WHC - WHITE CRYSTAL



WHT - WHITE MATTE



WHG - WHITE HIGH GLOSS



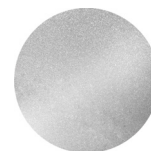
TGD - TRANSLUCENT GOLD



BA - BRUSHED ALUMINUM



ACR - ANTIQUE CHROME



CS - MIRROR SILVER SPARKLE



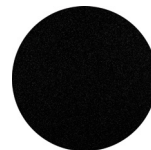
MCL - METALLIC CHARCOAL



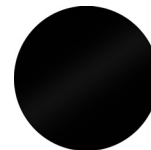
BZ - BRONZE



BLS - BLACK SCALE

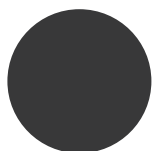


BLK - BLACK MATTE

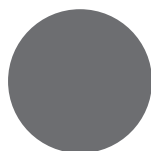


PBK - PIANO BLACK

## CORD ONLY FINISHES



CBLK - BLACK CORD

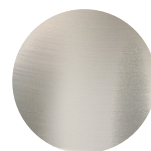


CGRY - GREY CORD



CWHT - WHITE CORD

## REFLECTOR ONLY FINISHES



SCL - SPECULAR CLEAR



SGC - SOFT GLOW CLEAR

## NOTES

DecoLine® is a registered trademark of Lexington Lighting Group, LLC dba Vantage Lighting  
Vantage reserves the right to change components, finishes or design details in any manner which does not alter the installed appearance or reduce performance and intended function.