

Part #	Prepared By
Project	Notes
Type	
Date	

6" Series DecoLine® Cylinder

Regressed Lens, LED Cylinder, 700-5000 Lumens



DESCRIPTION

DecoLine® architectural LED cylinders can be personalized with 25 standard interchangeable finish options. The 6" Series is available in two different sizes: 6"x 10" and 6"x 14". Mounting options include Surface Mount, Pendant Mount, Cord & Cable Mount and Wall Mount. Available with Narrow, Medium, Wide or Extra Wide optical distributions, DecoLine® cylinders are designed for general, accent and task lighting applications. Multiple dimming driver options are available for your specific design needs.

FEATURES

- 25 interchangeable finish options
- Additional Specular Clear & Soft Glow Clear Reflector finish options
- 3-Stage Beamshaper® optic to provide precise beam control & soft luminance
- 4 distribution options: Narrow, Medium, Wide & Extra Wide
- Surface, Pendant and Cord & Cable Mounting options
- 700, 1300, 2000, 3000, 4000 and 5000 Lumen Packages
- 2700K, 3000K, 3500K, 4000K & Dim-to-Warm (3000K-1800K) CCT options
- 80+ CRI Standard, 90+ CRI Option
- 3-Step SDCM
- Standard 0-10V 1% dimming driver (located in luminaire)
- Optional 0-10V 0.1%, Triac, Dali, DMX with RDM and Lutron dimming drivers (located in canopy)

LISTINGS

- ETL certified to UL 1598 and UL8750 requirements
- Tested according to LM-79 and LM-80 standards
- Suitable for damp locations; Wet location under covered ceiling
- Buy American Act

WARRANTY & NOTES

- 5-year limited warranty on LED module and driver
- www.vantageltg.com/product-warranty
- Photometric tests performed by an accredited NVLP facility and in accordance to IESNA LM-79-2008 testing procedures



VDL614

VDL610

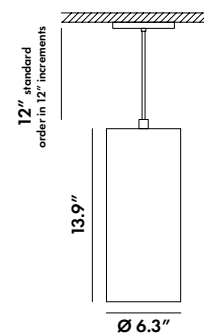
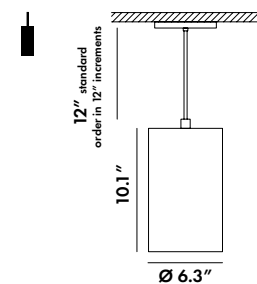
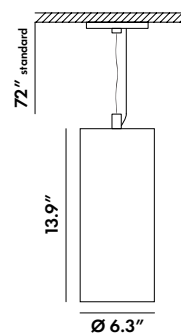
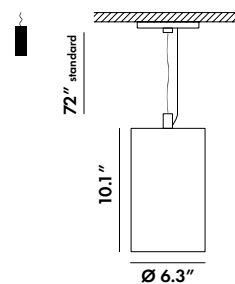
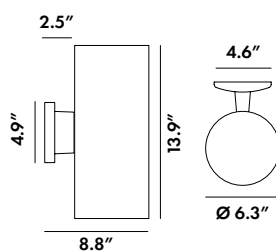
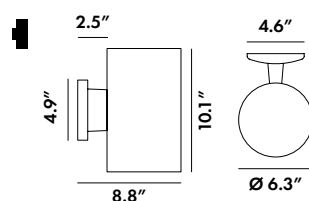
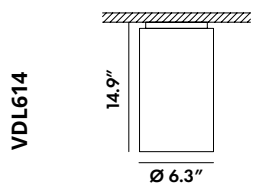
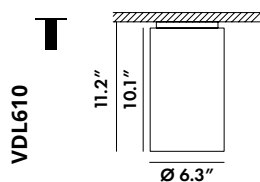
MOUNTING SOLUTIONS

SM - SURFACE MOUNT

WM - WALL MOUNT

CCK - CORD & CABLE MOUNT

PM - PENDANT MOUNT



MOUNTING NOTES

PM - 3/8" IP x 12" rigid stem with fixed canopy (standard). Swivel canopy (PM-SWC) available to accommodate sloped ceilings up to 45°.

Standard Pendant lengths (stem): 12", 24", and 36". If a different length is desired, please specify in 12" increments and add a field cut kit to the order.

CCK - 72" 5 conductor cord to support 0-10V dimming (standard). Other lengths available. Requires large canopy when paired with REM (Remote Emergency Battery)

Optional Drivers - Requires larger canopy, see canopy details for more information

DecoLine® is a registered trademark of Lexington Lighting Group, LLC dba Vantage Lighting
Vantage reserves the right to change components, finishes or design details in any manner which does not alter the installed appearance or reduce performance and intended function.

6" Series DecoLine® Cylinder

Regressed Lens, LED Cylinder, 700-5000 Lumens

DecoLine®
CYLINDERS

ORDERING INFORMATION

EXAMPLE: VDL610CMU-3035K-NW-HBL-BLK-BLK-DTD-PM(24)

			-			-			-			-			-			-		
1	2	3		4	5		6	7		8	9		10	11		12				

Additional Notes

1	2	3	4	5	6
Size	Mounting Option	Voltage	Lumens	Kelvin	Beamshaper®
VDL610 - 6"x10" VDL614 - 6"x14"	SM - Surface Mount WM - Wall Mount CCK - Cord & Cable Mount PM - Pendant Mount	U - Universal (120 - 277V) 1 - 120V 2 - 277V *Must provide voltage when optional drivers are selected.	07 - 700 11 - 1100 15 - 1500 20 - 2000 30 - 3000 40 - 4000* 50 - 5000* *40 * 50 only available for VDL614	27K - 2700 Kelvin 30K - 3000 Kelvin 35K - 3500 Kelvin 40K - 4000 Kelvin DTW - Dim-to-Warm* (3000 - 1800 Kelvin)	NW - Narrow 15° MD - Medium 30° WE - Wide 45° XW - Extra Wide 72°
7	8	9	10		
Reflector Finish	Housing Finish	Cord/Stem Finish	Canopy Finish		
ACR BLB BLK BLS BRD BVT BZ CS DEU HBL MCL PBK PCL PVT RBE RVT SOR SPK SSG TPG TRQ WHC WHG WHT SCL SGC CC-RAL()*	ACR BA BLB BLK BLS BRD BVT BZ CS DEU HBL MCL PBK PCL PVT RBE RVT SOR SPK SSG TPG TRQ WHC WHG WHT CC-RAL()*	CBLK* CGRY* CWHT* ACR BLB BLK BLS BRD BVT BZ CS DEU HBL MCL PBK PCL PVT RBE RVT SOR SPK SSG TPG TRQ WHC WHG WHT CC-RAL()*	ACR BLB BLK BLS BRD BVT BZ CS DEU HBL MCL PBK PCL PVT RBE RVT SOR SPK SSG TPG TRQ WHC WHG WHT CC-RAL()*		
11	12				
Driver Options*	Additional Options**				
DTD DTMHL TDM TDMHL DDM DMX DL-2 DL-3 LDE1 PEQ0	HCR REM REMHL CCK-() PM-() PM-SWC DCA				

ORDERING NOTES

DTW - Dim-to-Warm (3000 - 1800 Kelvin), Not available above 2000 lumens, Requires larger canopy

Cord Finish - Cord finish options only available in CBLK, CGRY, CWHT

CC-RAL() - Must supply RAL number when submitting order, custom color charge applies

Color Swatches - See P.5 for color swatches

*DRIVER OPTIONS NOTES

Optional Drivers - Require larger canopy, see canopy details for more information

DTD - 0-10V 0.1% dimming driver. For 4000 Lumens and below.

DTDHL - 0-10V 0.1% dimming driver. For 5000-7000 Lumens.

TDM - Triac (Forward Phase, 120V only) dimming driver.

DTMHL - Triac (Forward Phase, 120V only) dimming driver. For 6000 Lumens.

DDM - Dali dimming driver. Not available above 5000 lumens.

DMX - DMX with RDM dimming driver. Must Include Daisy Chain Adaptor.

DL-2 - Lutron 2-Wire Hi-Lume dimming driver. Not available above 3000 lumens.

DL-3 - Lutron 3-Wire Hi-Lume dimming driver. Not available above 3000 lumens.

LDE1 - Lutron Hi-lume 1% with Soft-On, Fade-to-Black dimming driver. Not available above 4000 lumens.

PEQ0 - Lutron Hi-lume Premier 0.1% with Soft-On, Fade-to-Black dimming driver. Not available above 4000 lumens.

**ADDITIONAL OPTIONS NOTES

HCR - 90+ CRI min.

REM - Remote Emergency Battery Backup. Not available above 4000 lumens.

REMHL - Remote Emergency Batter Backup HiLumen. Not available below 5000 lumens.

CCK-() - Specify length of Cord & Cable Mount

PM-() - Specify length of Pendant Mount

PM-SWC - Swivel Canopy 1/4" IP x12" rigid stem with swivel canopy for mounting on sloped ceilings up to 45°

DCA - DMX Daisy Chain Adaptor

LUMENS

Nominal Lumens	Delivered Lumens	Wattage	Lumens Per Watt
700	650	7.28	89.29
1100	1022	11.44	89.34
1500	1393	15.6	89.29
2000	1857	20.8	89.29
3000	2786	31.2	89.29
4000	3715	41.6	89.30
5000	4649	52	89.29
All measured at 3500K with a standard medium distribution *Actual Wattage/Lumens may vary.			

DecoLine® is a registered trademark of Lexington Lighting Group, LLC dba Vantage Lighting

Vantage reserves the right to change components, finishes or design details in any manner which does not alter the installed appearance or reduce performance and intended function.

6" Series DecoLine® Cylinder

Regressed Lens, LED Cylinder, 700-5000 Lumens



PHOTOMETRY

NW - Narrow 15°

Model
VDL610-XX-2035K-NW

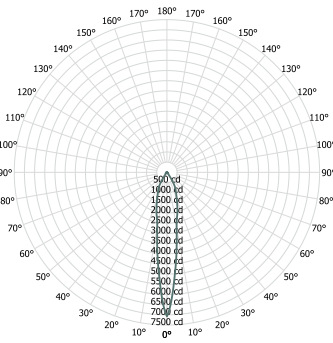
Lumens
1745

Watts
20.87

Efficacy
83.61

SC
0.27

Candela Curve



Cone of Light

Mounting Height AFF	FC at Center on Floor	Beam Diameter
8.0 ft	110 fc	2.3 ft
10.0 ft	71 fc	2.8 ft
12.0 ft	49 fc	3.4 ft
14.0 ft	36 fc	4.0 ft
16.0 ft	28 fc	4.5 ft
20.0 ft	18 fc	5.7 ft
24.0 ft	12 fc	6.8 ft
30.0 ft	8 fc	8.5 ft

Candela Table

	0°
0°	7066
5°	4766
10°	2749
15°	1989
20°	1424
30°	724
40°	54
50°	34
60°	52
70°	26
80°	12
90°	0

Zonal Lumen Summary

Zone	Lumens	% Luminaire
0° - 30°	1418	81%
0° - 40°	1595	91%
0° - 60°	1682	96%
60° - 90°	63	4%
0° - 20°	947	54%
20° - 50°	678	39%
50° - 70°	88	5%
70° - 90°	31	2%
Downlight	1745	100%
Uplight	0	0%
Total	1745	100%

Spacing Criterion

Height	Spacing	Light Level*
8 ft	2.2 ft	~ 110 fc
10 ft	2.7 ft	~ 71 fc
12 ft	3.2 ft	~ 49 fc
8 ft	1.6 ft	~ 196 fc
10 ft	2.0 ft	~ 126 fc
12 ft	2.4 ft	~ 87 fc
8 ft	1.1 ft	~ 442 fc
10 ft	1.4 ft	~ 283 fc
12 ft	1.6 ft	~ 196 fc

* approximate direct light level at floor based on spacing criterion overlap

MD - Medium 30°

Model
VDL610-XX-2035K-MD

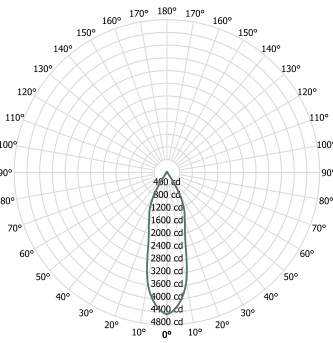
Lumens
1857

Watts
20.8

Efficacy
89.28

SC
0.5

Candela Curve



Cone of Light

Mounting Height AFF	FC at Center on Floor	Beam Diameter
8.0 ft	70 fc	4.3 ft
10.0 ft	45 fc	5.4 ft
12.0 ft	31 fc	6.4 ft
14.0 ft	23 fc	7.5 ft
16.0 ft	17 fc	8.6 ft
20.0 ft	11 fc	10.7 ft
24.0 ft	8 fc	12.9 ft
30.0 ft	5 fc	16.1 ft

Candela Table

	0°
0°	4465
5°	4167
10°	3496
15°	2237
20°	1648
30°	806
40°	57
50°	19
60°	16
70°	14
80°	6
90°	0

Zonal Lumen Summary

Zone	Lumens	% Luminaire
0° - 30°	1591	86%
0° - 40°	1789	96%
0° - 60°	1828	98%
60° - 90°	29	2%
0° - 20°	1030	55%
20° - 50°	782	42%
50° - 70°	30	2%
70° - 90°	15	1%
Downlight	1857	100%
Uplight	0	0%
Total	1857	100%

Spacing Criterion

Height	Spacing	Light Level*
8 ft	4.0 ft	~ 70 fc
10 ft	5.0 ft	~ 45 fc
12 ft	6.0 ft	~ 31 fc
8 ft	3.0 ft	~ 124 fc
10 ft	3.8 ft	~ 79 fc
12 ft	4.5 ft	~ 55 fc
8 ft	2.0 ft	~ 279 fc
10 ft	2.5 ft	~ 179 fc
12 ft	3.0 ft	~ 124 fc

* approximate direct light level at floor based on spacing criterion overlap

WE - Wide 45°

Model
VDL610-XX-2035K-WE

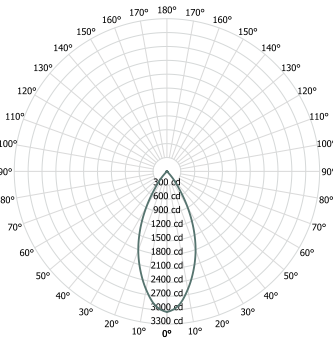
Lumens
1872

Watts
20.79

Efficacy
90.04

SC
0.72

Candela Curve



Cone of Light

Mounting Height AFF	FC at Center on Floor	Beam Diameter
8.0 ft	47 fc	6.9 ft
10.0 ft	30 fc	8.6 ft
12.0 ft	21 fc	10.3 ft
14.0 ft	16 fc	12.0 ft
16.0 ft	12 fc	13.7 ft
20.0 ft	8 fc	17.2 ft
24.0 ft	5 fc	20.6 ft
30.0 ft	3 fc	25.7 ft

Candela Table

	0°
0°	3039
5°	2907
10°	2592
15°	2216
20°	1810
30°	890
40°	205
50°	11
60°	8
70°	8
80°	6
90°	0

Zonal Lumen Summary

Zone	Lumens	% Luminaire
0° - 30°	1494	80%
0° - 40°	1798	96%
0° - 60°	1853	99%
60° - 90°	20	1%
0° - 20°	888	47%
20° - 50°	956	51%
50° - 70°	16	1%
70° - 90°	12	1%
Downlight	1872	100%
Uplight	0	0%
Total	1872	100%

Spacing Criterion

Height	Spacing	Light Level*
8 ft	5.8 ft	~ 47 fc
10 ft	7.2 ft	~ 30 fc
12 ft	8.6 ft	~ 21 fc
8 ft	4.3 ft	~ 84 fc
10 ft	5.4 ft	~ 54 fc
12 ft	6.5 ft	~ 38 fc
8 ft	2.9 ft	~ 190 fc
10 ft	3.6 ft	~ 122 fc
12 ft	4.3 ft	~ 84 fc

* approximate direct light level at floor based on spacing criterion overlap

XW - Extra Wide 72°

Model
VDL610-xx-2035K-XW

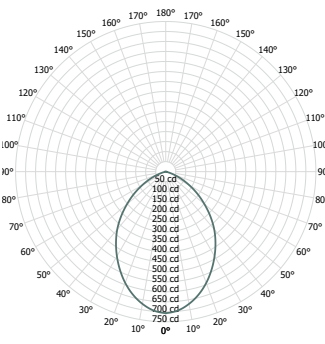
Lumens
1285

Watts
20.72

Efficacy
62.02

SC
1.05

Candela Curve



Cone of Light

Mounting Height AFF	FC at Center on Floor	Beam Diameter
8.0 ft	11 fc	14.4 ft
10.0 ft	7 fc	17.9 ft
12.0 ft	5 fc	21.5 ft
14.0 ft	4 fc	25.1 ft
16.0 ft	3 fc	28.7 ft
20.0 ft	2 fc	35.9 ft
24.0 ft	1 fc	43.1 ft
30.0 ft	1 fc	53.8 ft

Candela Table

	0°
0°	707
5°	696
10°	671
15°	635
20°	592
30°	488
40°	377
50°	252
60°	137
70°	43
80°	5
90°	0

Zonal Lumen Summary

Zone	Luminous flux (lm)	% Luminaire
0° - 30°	495	38%
0° - 40°	764	59%
0° - 60°	1177	92%
60° - 90°	108	8%
0° - 20°	247	19%
20° - 50°	758	59%
50° - 70°	258	20%
70° - 90°	21	2%
Downlight	1285	100%
Uplight	0	0%
Total	1285	100%

Spacing Criterion

Height	Spacing	Light Level*
8 ft	8.4 ft	~ 11 fc
10 ft	10.5 ft	~ 7 fc
12 ft	12.6 ft	~ 5 fc
8 ft	6.3 ft	~ 20 fc
10 ft	7.9 ft	~ 13 fc
12 ft	9.5 ft	~ 9 fc
8 ft	4.2 ft	~ 44 fc
10 ft	5.3 ft	~ 28 fc
12 ft	6.3 ft	~ 20 fc

* approximate direct light level at floor based on spacing criterion overlap

6" Series DecoLine® Cylinder

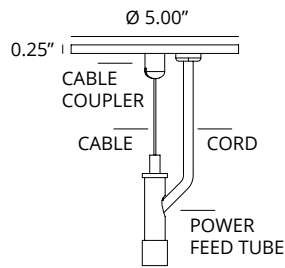
Regressed Lens, LED Cylinder, 700-5000 Lumens

DecoLine®
CYLINDERS

CANOPY DETAILS

CCK - With Standard Driver up to 5000 Lumens

Cord & Cable Mount, fixed canopy (standard), Driver located in Cylinder

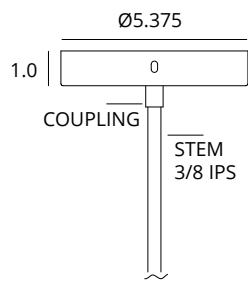


Driver Compatibility

For 700 - 5000 Lumens
Standard 0-10V 1%

PM - With Standard Driver up to 5000 Lumens

Pendant Mount, rigid stem, fixed canopy (standard), Driver located in Cylinder

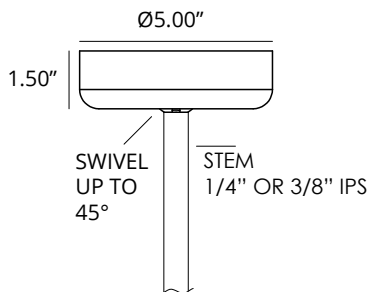


Driver Compatibility

For 700 - 5000 Lumens
Standard 0-10V 1%

PM-SWC - With Standard Driver up to 5000 Lumens

Pendant Mount, rigid stem, swivel canopy, up to 45° slope ceiling (optional), Driver located in Cylinder

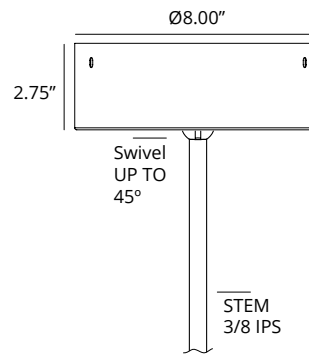


Driver Compatibility

For 700 - 5000 Lumens
Standard 0-10V 1%

OPTIONAL DRIVERS

Canopy for larger driver options. Driver located in canopy.



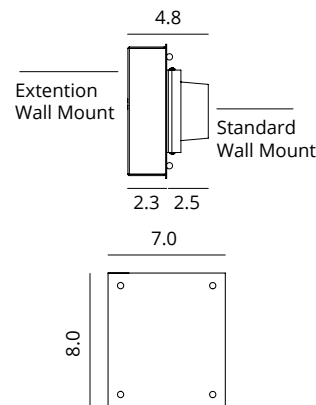
Driver Compatibility

For 700 - 4000 Lumens

DTD
DTDHL
TDM
TDMHL
DDM
DMX
DL-2
DL-3
LDE1
PEQ0
DTW - Dim-to-Warm
REM (any combination of driver)
Available as
CCK, PM-RGC & PM-SWC

WALL MOUNT EXTENSION

Wall Mount Extension for larger optional drivers



Driver Compatibility

DTD
TDM
DDM
DMX
DL-2
LDE1
PEQ0
LDE5

DTW - Dim-to-Warm

6" Series DecoLine® Cylinder

Regressed Lens, LED Cylinder, 700-5000 Lumens

DecoLine®
CYLINDERS

25 STANDARD FINISHES



RBE - ROBIN EGG



TRQ - TURQUOISE



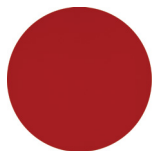
DEU - DARK EUCALYPTUS



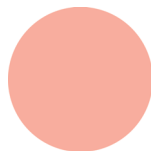
HBL - HYDRANGEA BLUE



BLB - BLUE BIRD



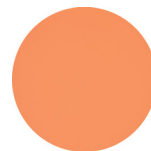
BRD - BORDEAUX RED



PCL - PINK CORAL



SPK - SUBTLE PINK



SOR - SALMON ORANGE



SSG - SUNSET ORANGE



RVT - RED VELVET



PVT - PURPLE VELVET



BVT - BLUE VELVET



WHC - WHITE CRYSTAL



WHT - WHITE MATTE



WHG - WHITE HIGH GLOSS



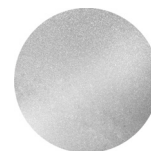
TGD - TRANSLUCENT GOLD



BA - BRUSHED ALUMINUM



ACR - ANTIQUE CHROME



CS - MIRROR SILVER SPARKLE



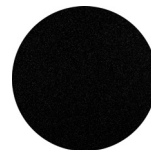
MCL - METALLIC CHARCOAL



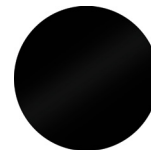
BZ - BRONZE



BLS - BLACK SCALE

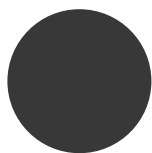


BLK - BLACK MATTE

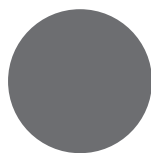


PBK - PIANO BLACK

CORD ONLY FINISHES



CBLK - BLACK CORD

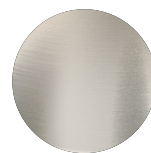


CGRY - GREY CORD



CWHT - WHITE CORD

REFLECTOR ONLY FINISHES



SCL - SPECULAR CLEAR



SGC - SOFT GLOW CLEAR

NOTES

DecoLine® is a registered trademark of Lexington Lighting Group, LLC dba Vantage Lighting
Vantage reserves the right to change components, finishes or design details in any manner which does not alter the installed appearance or reduce performance and intended function.