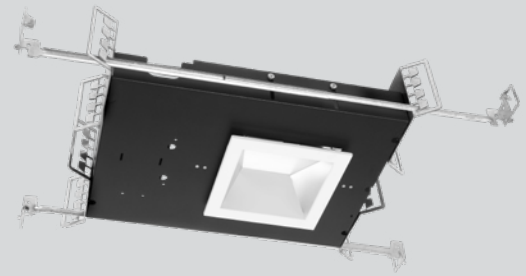


Part #	Prepared By
Project	Notes
Type	
Date	

6" Sqaure, F-Class Gen V - IC-RATED

Lensed LED Wall Wash, 750-5000 Lumens



Features & Specifications

ELECTRICAL SYSTEM

- 750 - 5000 lumens
- 2700K - 5000K CCT
- Optional Tunable White, 2700K - 6500K or 1800K - 4000K CCT
- 80 CRI with 3 SDCM color consistency (+90 CRI optional)
- Standard 0-10V 1% dimming driver, ZDM; optional drivers available
- 120V - 277V Universal Input Volts, 347V option
- Minimum 50,000 hour lifetime at L70
- -20°C to 30°C Ambient Operating Temperature Range

OPTICS

- Sqaure architectural-grade reflector with regressed Wall Wash lens
- Polycarbonate, Glass and Acrylic lens options
- Reflectors available in Alzak® and painted finishes
- Medium Wall Wash distribution

FRAME & MOUNTING

- Galvanized steel frame with integrated junction box featuring hinged access covers with spring retaining latches
- Vertically adjustable rigid formed mounting brackets that accept a variety of mounting bars with auxillary nail holes and T-bar slots
- T-Bars included, suitable for joist spacing from 12" to 24"
- Supports straight conduit runs - (3) 3/4" knockouts
- Through branch wiring - (8) #12 AWG (4 in, 4 out), 90°C conductors
- Accessibility to all LED components from below ceiling
- Flush to the ceiling reflectors, secured by high quality friction clips

Listings

- ETL certified to UL 1598 and UL8750 requirements
- Tested according to LM-79 and LM-80 standards
- Energy Star® certified versions available (see Vantage Energy Star® guide for details)
- Suitable for damp locations under covered ceiling
- IC-Rated: insulation can be in direct contact with luminaire
- Buy American Act (BAA)

Warranty & Notes

- 5-year limited warranty on LED module and driver
- www.vantageltg.com/product-warranty
- Photometric tests performed by an accredited NVLP facility and in accordance to IESNA LM-79-2008 testing procedures

Lumens*

Nominal Lumens	Delivered Lumens	Wattage	Lumens Per Watt
750	711	9.4	75.64
1100	1043	15.4	67.73
1500	1423	21.6	65.88
2000	1897	26.16	72.52
3000	2845	32.2	88.35
4000	3794	45.6	83.20
5000	4742	58.5	81.06

All measured at 3500K with a standard medium distribution
*Actual Wattage/Lumens may vary.

Ordering Information

EXAMPLE: SQIC66VEFLEDWWU-1130K-LSQ6631-SGC-ZDM

Series	Voltage	Lumens	Kelvin (CCT)	Reflector/Lens	Finishes	Options**
SQIC66VEFLEDWW	U - 120V-277V 1 - 120V 2 - 277V 3 - 347V (347V Step Down Transformer) *Must provide voltage when optional drivers are selected.	07 - 750 11 - 1100 15 - 1500 20 - 2000 30 - 3000 40 - 4000 50 - 5000	27K - 2700K 30K - 3000K 35K - 3500K 40K - 4000K 50K - 5000K TWC - Tunable White Full Color (2700K-6500K)* TWW - Turnable White Warm Color (1800K-4000K)* DTW - Dim-to-Warm (1800K-3000K)** *Available up to 2000 lumens **Available up to 5000 lumens	LSQ6631 LSQ6631P LSQ6631FR LSQ6631FRP LSQ6634 LSQ6634P LSQ6632D 20° LSQ6634D 40° LSQ6636D 60° LSQ6638D 80°	SCL Specular Clear SGC Soft Glow Clear WHT White Matte *All trims supplied standard with white painted flange.	ZDM (standard) DTD DTDHL DMX DCA TDM DDM DDMHO HCR PF EM17 EM-CW-LED GR-44-"xx" GTD SENSDYOC BRGESEN

*Lens Notes

LSQ6631 - Wall Wash Clear Glass Lensed Reflector
 LSQ6631P - Wall Wash Clear Polycarbonate Lensed Reflector
 LSQ6631FR - Wall Wash Frosted Glass Lensed Reflector
 LSQ6631FRP - Wall Wash Frosted Polycarbonate Lensed Reflector
 LSQ6634 - Wall Wash Prismatic Glass Lensed Reflector
 LSQ6634P - Wall Wash Prismatic Acrylic Lensed Reflector
 LSQ6632D - BeamShaper® Lens, 20° Beam Angle Reflector
 LSQ6634D - BeamShaper® Lens, 40° Beam Angle Reflector
 LSQ6636D - BeamShaper® Lens, 60° Beam Angle Reflector
 LSQ6638D - BeamShaper® Lens, 80° Beam Angle Reflector

**Options Notes

ZDM - 0-10V 1% dimming driver (standard)
 DTD - 0-10V 0.1% dimming driver. (up to 4000 lumens)
 DTDHL - 0-10V 0.1% dimming driver. (use with 5000 - 7000 lumens)
 DMX - DMX with RDM dimming driver, requires DCA

DCA - Daisy Chain Adaptor

TDM - Triac (Foward Phase, 120V only) dimming driver. (up to 5000 lumens)
 DMM - Dali Driver (up To 5000 Lumens)
 DMMHO - Dali Driver (use with 6000 and 7000 Lumens)
 TWC - Tunable White Full Color 27k-65k, 90+ Cri With 0-10v Dual Control And 0.1% Dimming. (up to 2000 Lumens)
 TWW - Turnable White Warm Color 18k-40k, 90+ Cri With 0-10v Dual Control And 0.1% Dimming. (up to 2000 Lumens)
 DTW - Dim-to-Warm 18K-30K, 90CRI with 0-10V. (up to 5000 lumens)
 HCR - High CRI, 90+ minimum. (Not available in 5000 Kelvin)
 PF - Polished Flange
 AT - Air Tight
 EM17 - Battery Backup W/remote Test Button & Indicator Light (for 800-5000 Lumens)
 EM20 - Battery Backup W/remote Test Button & Indicator Light (for above 5000 Lumens)
 EM-CW-LED - Cold Weather Rated Emergency Driver

GR-66-"xx" - 6" Goof Ring (inner Dimension - Specify outer dimension in place of "xx")

GTD - Generator Transfer Device
 SENS DYOC - Daylight/occupancy Sensor - remote mount
 BRGESEN - Bridge up to 400 Watts for Sensdyoc

Vantage reserves the right to change components, finishes or design details in any manner which does not alter the installed appearance or reduce performance and intended function.

6" Sqaure, F-Class Gen V - IC-RATED

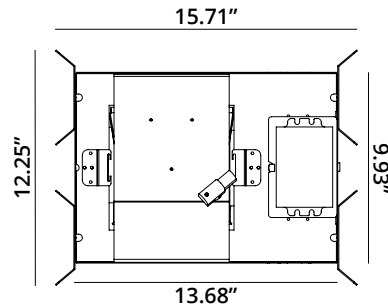
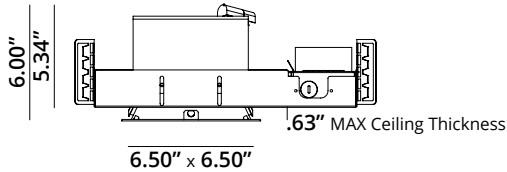
Lensed LED Wall Wash, 750-5000 Lumens

Dimensional Data

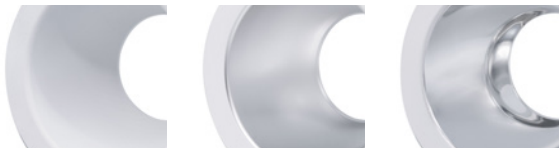
Ceiling Cut Out 6.50" x 6.50"

Above Ceiling Height
with 5/8" Ceiling
5.34" ≤ 5000L

Above Ceiling Height
Max Ceiling Thickness
1.30" - 4.67"
Min Ceiling Thickness
0.25" - 5.73"



Reflector Finishes



WHT
White Matte

SGC
Soft Glow Clear

SCL
Specular Clear

Photometry

LSQ6631 - Medium Wall Wash Distribution

Model
SQIC66EFLEDWWU-2035K-LSQ6631-SCL

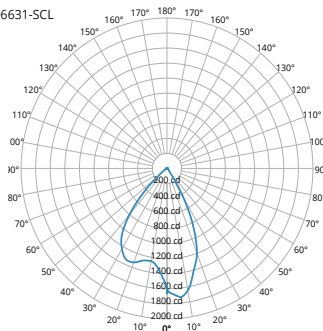
Lumens
1,897

Watts
26.16

Efficacy
72.52

SC
0.81

Candela Curve



Cone of Light

Mounting Height AFF	FC at Center on Floor	Beam Diameter
8.0 '	26 fc	8.1 '
10.0 '	17 fc	10.2 '
12.0 '	12 fc	12.2 '
14.0 '	8 fc	14.2 '
16.0 '	6 fc	16.3 '
20.0 '	4 fc	20.3 '
24.0 '	3 fc	24.4 '
30.0 '	2 fc	30.5 '

Candela Table

	0.00°
0.00°	1,663
5.00°	1,706
10.00°	1,643
15.00°	1,410
20.00°	1,198
30.00°	456
40.00°	49
50.00°	36
60.00°	15
70.00°	12
80.00°	6
90.00°	6

Zonal Lumen Summary

Zone	Lumens	% Luminaire
0° - 30°	1,159	61%
0° - 40°	1,598	84%
0° - 60°	1,817	96%
60° - 90°	35	2%
0° - 20°	599	32%
20° - 50°	1,179	62%
50° - 70°	55	3%
70° - 90°	19	1%
0° - 90°	1,852	98%
90° - 180°	44	2%
Total	1,897	100%

Spacing Criterion

Height	Spacing	Light Level*
8 ft	6.5 ft	~ 26 fc
10 ft	8.1 ft	~ 17 fc
12 ft	9.7 ft	~ 12 fc
8 ft	4.9 ft	~ 46 fc
10 ft	6.1 ft	~ 30 fc
12 ft	7.3 ft	~ 21 fc
8 ft	3.2 ft	~ 104 fc
10 ft	4.1 ft	~ 67 fc
12 ft	4.9 ft	~ 46 fc

* approximate direct light level at floor based on spacing criterion overlap

MULTIPLIER

CRI	Multiplier	Kelvin	Multiplier	Reflector Finish	Multiplier
80	1	2700K	0.939	SCL	1
90	0.8	3000K	0.975	SGC	0.95
		3500K	1	WHT	0.87
		4000K	1.035		
		5000K	1.098		

Vantage reserves the right to change components, finishes or design details in any manner which does not alter the installed appearance or reduce performance and intended function.