

Part #	Prepared By
Project	Date
Type	

6" Round, F-Class Commercial Remodeler

Open, LED Remodeler Kit 1100-5000 Lumens



Description

F-Class Commercial LED Remodeler kits are designed to update existing CFL, incandescent, halogen and HID downlights. Easy to install and reduce lighting energy and maintenance costs. Standard 0-10V 10% dimming driver; optional drivers available.

Features & Construction

ELECTRICAL SYSTEM

- 1100 - 5000 lumens
- 2700K - 5000K CCT
- 80 CRI with 3 SDCM color consistency (+90 CRI optional)
- Standard 0-10V 10% dimming driver, SDM; optional drivers available
- 120V - 277V universal Input Volts
- Minimum 50,000 hour lifetime at L70
- -20°C to 30°C Ambient Operating Temperature Range

OPTICS

- Precision spun reflector
- Reflectors available in Specular Clear, Soft Glow Clear and White Matte
- Distribution is free of streaks, striations and hotspots
- 60° Medium distribution
- 45° Cutoff

FRAME & MOUNTING

- Minimal components above ceiling to fit into existing spaces
- Key Slots secure reflector to LED light engine assembly
- C-Shaped pan allows for easy installation through existing ceiling hole and is secured with clips to the ceiling

Listings

- ETL certified to UL 1598 and UL8750 requirements
- Tested according to LM-79 and LM-80 standards
- Energy Star® certified versions available (see Vantage Energy Star® guide for details)
- Damp Location and Wet Location Under Covered Ceiling (per NEC 410 & UL 1598)
- Buy American Act (BAA)

Warranty & Notes

- 5-year limited warranty on LED module and driver
- www.vantageltg.com/product-warranty
- Photometric tests performed by an accredited NVLP facility and in accordance to IESNA LM-79-2008 testing procedures
- Insulation cannot be in direct contact with luminaire

Lumens

Nominal Lumens	Delivered Lumens	Wattage	Lumens Per Watt
1100	1057	15.4	68.64
1500	1441	21.6	66.71
2000	1921	25.8	74.46
3000	2876	33.39	86.13
4000	3592	45.6	78.77
5000	4491	58.3	77.03

All measured at 3500K with a standard medium distribution
*Actual Wattage/Lumens may vary.

Ordering Information

EXAMPLE: RMD-V6OFCR1-0735K-F6060-SGC-R-SDM-HCR

Series	Voltage	Lumens	Kelvin (CCT)	Reflector	Reflector Finish	Options*
RMD-V6OFCR	U - 120V-277V* *Universal Voltage only available with ZDM-1% Driver. 1 - 120V** 2 - 277V** **Must specify voltage when standard SDM 10% is selected. TDM (triac) is 120V only.	11 - 1100 15 - 1500 20 - 2000 30 - 3000 40 - 4000 50 - 5000	27K - 2700K 30K - 3000K 35K - 3500K 40K - 4000K 50K - 5000K	F6060 60° Medium Open Reflector F6019 Non-Conductive Shower Trim	SCL-R Specular Clear SGC-R Soft Glow Clear WHT-R White Matte *All trims supplied standard with white painted flange.	SDM (standard) ZDM TDM DL-3 HCR PF REM

*Options Notes

SDM - 0-10V 10% dimming driver (standard)
 ZDM - 0-10V 1% dimming driver.
 TDM - Triac (Forward Phase, 120V only) dimming driver.
 DL-3 - Lutron HI-Lume 1% 3-wire dimming driver
 HCR - High CRI, 90+ minimum. Not available in 5000 Kelvin.
 PF - Polished Flange
 REM - Emergency battery back-up. Remote test button & indicator light.
 GR-6-xx - 6" Goof Ring (specify outer dimension in inches where 'xx' are).

Reflector Finishes



SCL-R
Specular Clear

SGC-R
Soft Glow Clear

WHT-R
White Matte

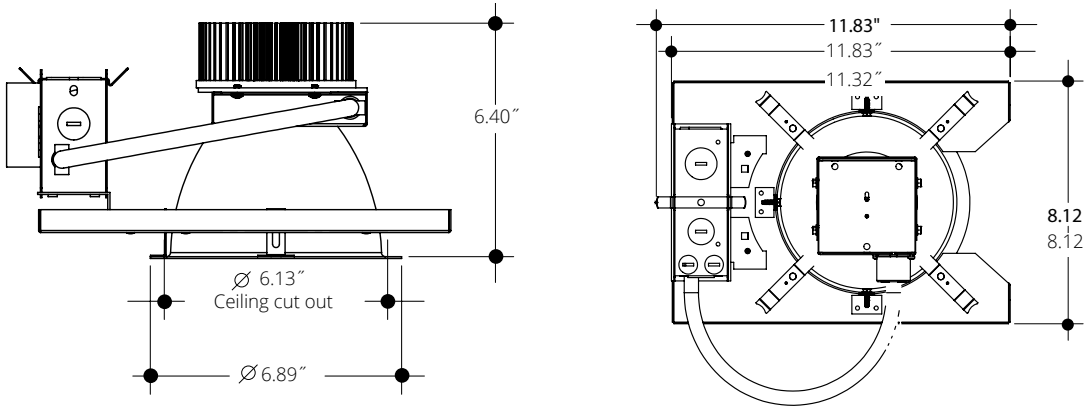
6" Round, F-Class Commercial Remodeler

Open, LED Remodeler Kit 1100-5000 Lumens

F-CLASS
RETROFIT & REMODELER

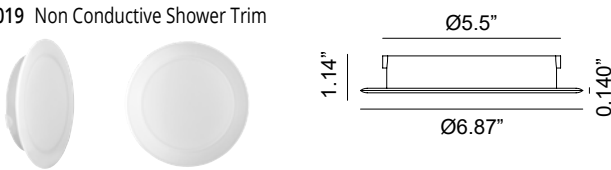
Dimensional Data

Ceiling Cut Out 6.13"

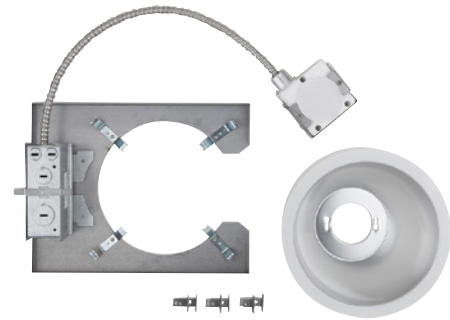


SHOWER TRIM - LED - ROUND 6" Aperture

L6019 Non Conductive Shower Trim



RETROFIT KIT CONTENTS



MEDIUM - 60° 2035K

Model
RET-V6OFCR-2035K-F6060-SCL

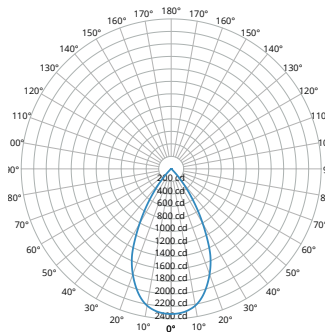
Lumens
1,921

Watts
25.8

Efficacy
74.46

SC
0.89

Candela Curve



Cone of Light

Mounting Height AFF	FC at Center on Floor	Beam Diameter
8.0 '	36 fc	8.6 '
10.0 '	23 fc	10.8 '
12.0 '	16 fc	12.9 '
14.0 '	12 fc	15.1 '
16.0 '	9 fc	17.2 '
20.0 '	6 fc	21.5 '
24.0 '	4 fc	25.8 '
30.0 '	3 fc	32.3 '

Candela Table

	0.00°
0.00°	2,322
5.00°	2,302
10.00°	2,223
15.00°	2,050
20.00°	1,796
30.00°	1,010
40.00°	275
50.00°	25
60.00°	10
70.00°	5
80.00°	2
90.00°	0

Zonal Lumen Summary

Zone	Lumens	% Luminaire
0° - 30°	1,442	75%
0° - 40°	1,819	95%
0° - 60°	1,910	99%
60° - 90°	11	1%
0° - 20°	788	41%
20° - 50°	1,107	58%
50° - 70°	22	1%
70° - 90°	4	0%
0° - 90°	1,921	100%
90° - 180°	0	0%
Total	1,921	100%

Spacing Criterion

Height	Spacing	Light Level*
8 ft	7.1 ft	~ 36 fc
10 ft	8.9 ft	~ 23 fc
12 ft	10.7 ft	~ 16 fc
8 ft	5.3 ft	~ 65 fc
10 ft	6.7 ft	~ 41 fc
12 ft	8.0 ft	~ 29 fc
8 ft	3.6 ft	~ 145 fc
10 ft	4.5 ft	~ 93 fc
12 ft	5.3 ft	~ 65 fc

* approximate direct light level at floor based on spacing criterion overlap

MULTIPLIER

CRI	Multiplier	Kelvin	Multiplier	Reflector Finish	Multiplier
80	1	2700K	0.939	SCL	1
90	0.8	3000K	0.975	SGC	0.95
		3500K	1	WHT	0.87
		4000K	1.035		
		5000K	1.098		