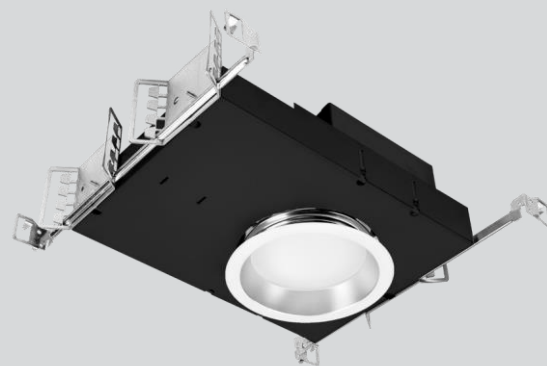


Part #	Prepared By
Project	Notes
Type	
Date	

6" Round, F-Class Gen V - IC-RATED

Lensed, LED Downlight, 750-5000 Lumens



Features & Specifications

ELECTRICAL SYSTEM

- 750 - 5000 lumens
- 2700K - 5000K CCT
- Optional Tunable White, 2700K - 6500K or 1800K - 4000K CCT
- 80 CRI with 3 SDCM color consistency (+90 CRI optional)
- Standard 0-10V 1% dimming driver, ZDM; optional drivers available
- 120V - 277V Universal Input Volts, 347V option
- Minimum 50,000 hour lifetime at L70
- 20°C to 30°C Ambient Operating Temperature Range

OPTICS

- Precision spun architectural-grade reflector with regressed lens
- Polycarbonate, Glass and Acrylic lens options
- Reflectors available in Alzak® and painted finishes
- Distribution is free of streaks, striations and hotspots
- 60° Medium distribution
- Easy to clean
- Air Tight sealed lens/reflector optional

FRAME & MOUNTING

- Galvanized steel frame with integrated junction box featuring hinged access covers with spring retaining latches
- Vertically adjustable rigid formed mounting brackets that accept a variety of mounting bars with auxiliary nail holes and T-bar slots
- T-Bars included, suitable for joist spacing from 12" to 24"
- Supports straight conduit runs - (3) 3/4" knockouts
- Through branch wiring - (8) #12 AWG (4 in, 4 out), 90°C conductors
- Accessibility to all LED components from below ceiling
- Flush to the ceiling reflectors, secured by high quality friction clips

Listings

- ETL certified to UL 1598 and UL8750 requirements
- Tested according to LM-79 and LM-80 standards
- Energy Star® certified versions available (see Vantage Energy Star® guide for details)
- Suitable for damp locations under covered ceiling
- Optional IP65 dust and water protection below ceiling plane in certain configurations
- IC-Rated: insulation can be in direct contact with luminaire
- Buy American Act (BAA)

Warranty & Notes

- 5-year limited warranty on LED module and driver
- www.vantageltg.com/product-warranty
- Photometric tests performed by an accredited NVLP facility and in accordance to IESNA LM-79-2008 testing procedures

Lumens*

Nominal Lumens	Delivered Lumens	Wattage	Lumens Per Watt
750	614	9.4	65.32
1100	901	15.4	58.51
1500	1229	21.6	56.90
2000	1638	27.2	60.22
3000	2457	33.5	73.34
4000	3276	45.6	71.84
5000	4095	58.3	70.24

All measured at 3500K with a standard medium distribution
*Actual Wattage/Lumens may vary.

Ordering Information

EXAMPLE: AIC6VEFLEDU-1130K-L6011FRP-SGC-ZDM

Series	Voltage	Lumens	Kelvin (CCT)	Reflector/Lens*	Finishes	Options**
AIC6VEFLED	U - 120V-277V 1 - 120V 2 - 277V 3 - 347V (347V Step Down Transformer) *Must provide voltage when optional drivers are selected.	07 - 750 11 - 1100 15 - 1500 20 - 2000 30 - 3000 40 - 4000 50 - 5000	27K - 2700K 30K - 3000K 35K - 3500K 40K - 4000K 50K - 5000K TWC - Tunable White Full Color (2700K-6500K)* TWW - Turnable White Warm Color (1800K-4000K)* DTW - Dim-to-Warm (1800K-3000K)** *Available up to 2000 lumens **Available up to 5000 lumens	L6011 L6011P L6011FR L6011FRP L6014 L6014P L6016 L6012D 20° L6014D 40° L6016D 60° L6018D 80°	SCL Specular Clear SGC Soft Glow Clear WHT White Matte *All trims supplied standard with white painted flange.	ZDM (standard) DTD DTDHL DMX DCA TDM DMM DMMHO IP65 HCR PF AT EM17 EM-CW-LED GR-6-xx" GTD SENSDYOC BRGESEN

*Lens Notes

L6011 - Medium 60° Clear Glass Lensed Reflector
L6011P - Medium 60° Clear Polycarbonate Lensed Reflector
L6011FR - Medium 60° Frosted Glass Lensed Reflector
L6011FRP - Medium 60° Frosted Polycarbonate Lensed Reflector
L6014 - Medium 60° Prismatic Glass Lensed Reflector
L6014P - Medium 60° Prismatic Acrylic Lensed Reflector
L6016 - Fresnel Glass Lensed Reflector
L6012D - BeamShaper® Lens, 20° Beam Angle Reflector
L6014D - BeamShaper® Lens, 40° Beam Angle Reflector
L6016D - BeamShaper® Lens, 60° Beam Angle Reflector
L6018D - BeamShaper® Lens, 80° Beam Angle Reflector

**Options Notes

ZDM - 0-10V 1% dimming driver (standard)
DTD - 0-10V 0.1% dimming driver. (up to 4000 lumens)
DTDHL - 0-10V 0.1% dimming driver. (use with 5000 -7000 lumens)
DMX - DMX with RDM dimming driver, requires DCA
DCA - Daisy Chain Adaptor
TDM - Triac (Forward Phase, 120V only) dimming driver. (up to 5000 lumens)
DMM - Dali Driver (up To 5000 Lumens)
DMMHO - Dali Driver (use with 6000 and 7000 Lumens)
TWC - Tunable White Full Color 27k-65k, 90+ CRI With 0-10v Dual Control And 0.1% Dimming. (up to 2000 Lumens)
TWW - Turnable White Warm Color 18k-40k, 90+ CRI With 0-10v Dual Control And 0.1% Dimming. (up to 2000 Lumens)

DTW - Dim-to-Warm 18K-30K, 90CRI with 0-10V. (up to 5000 lumens)
HCR - High CRI, 90+ minimum. (Not available in 5000 Kelvin)
PF - Polished Flange
EM17 - Battery Backup Wiremote Test Button & Indicator Light (for 800-5000 Lumen Luminaires)
EM-CW-LED - Cold Weather Rated Emergency Driver
GR-6-xx" - 6" Goof Ring (inner Dimension - Specify outer dimension In place of 'xx')
GTD - Generator Transfer Device
SENSDYOC - Daylight/occupancy Sensor - remote mount
BRGESEN - Bridge up to 400 Watts for Sensdyoc
IP65 - requires lens EXCLUDING L6014 and L6014P

6" Round, F-Class Gen V - IC-RATED

Lensed, LED Downlight, 750-5000 Lumens

Dimensional Data

Ceiling Cut Out 6.13"

Overall Height with
5/8" Ceiling

4.01" ≤ 3000L

4.31" 4000L & 5000L

Overall Height

Min **3.45"** with **1.25"** ceiling

Max **4.5"** with **0.25"** ceiling

Add **0.30"** for 4000 & 5000L

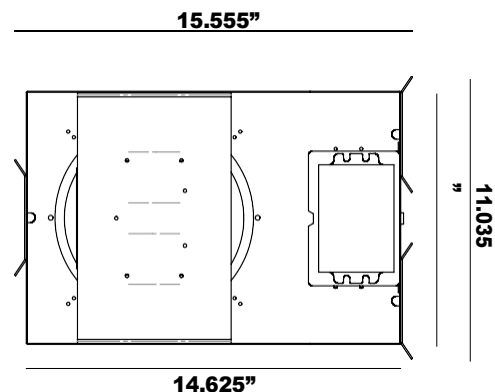
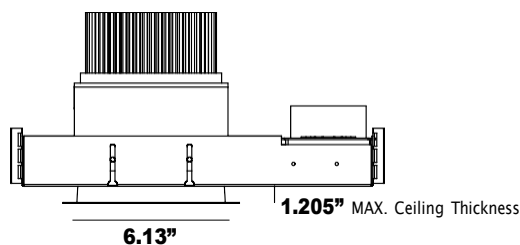
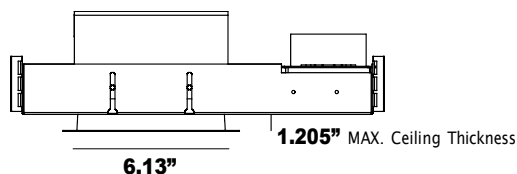
Overall Height with
5/8" Ceiling

6.76" 6000L & 7000L

Overall Height

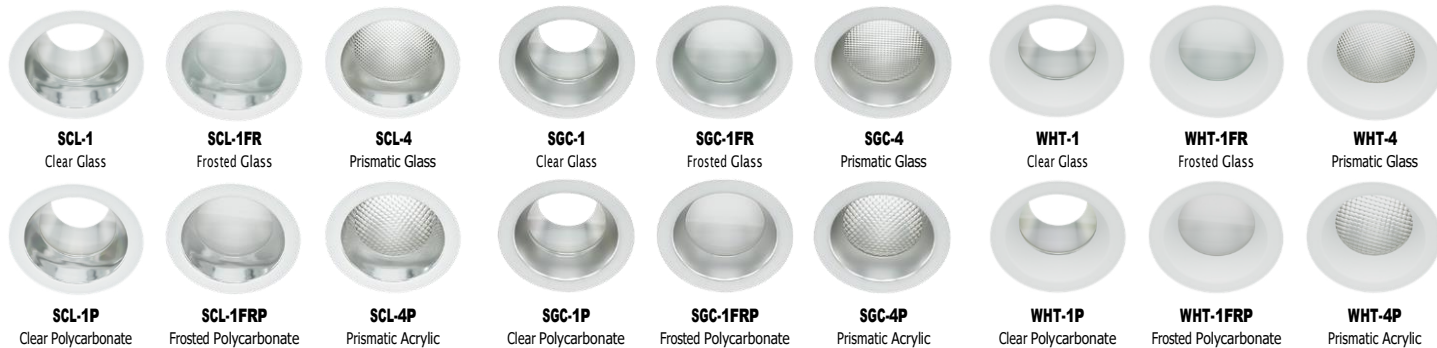
Min **6.20"** with **1.25"** ceiling

Max **7.26"** with **0.25"** ceiling



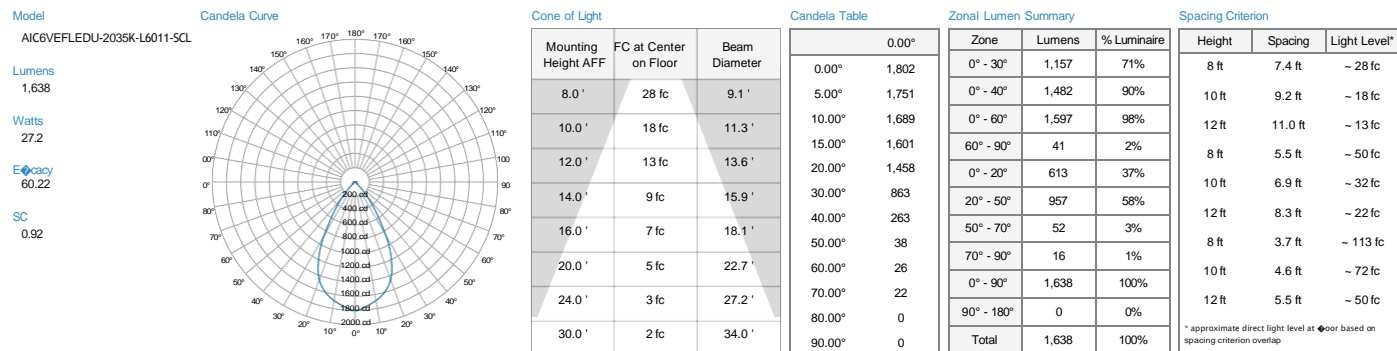
PLEASE NOTE – IP65 option requires four equally spaced fasteners through the reflector flange, visible from below the ceiling plane.

Reflector Finishes / Lens Options



Photometry

L6011 - 60° Medium Distribution



MULTIPLIER

CRI	Multiplier	Kelvin	Multiplier	Reflector Finish	Multiplier
80	1	2700K	0.939	SCL	1
90	0.8	3000K	0.975	SGC	0.95
		3500K	1	WHT	0.87
		4000K	10.35		
		5000K	1.098		

Vantage reserves the right to change components, finishes or design details in any manner which does not alter the installed appearance or reduce performance and intended function.