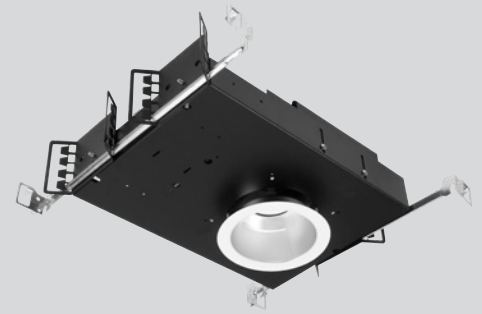
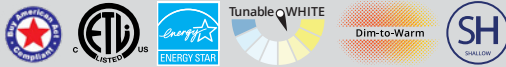


Part #	Prepared By
Project	Notes
Type	
Date	

4" Round, F-Class Gen V - IC-RATED

Open LED Wall Wash, 750-5000 Lumens - Shallow Housing



Features & Specifications

ELECTRICAL SYSTEM

- 750 - 5000 lumens
- 2700K - 5000K CCT
- Optional Tunable White, 2700K - 6500K or 1800K - 4000K CCT
- 80 CRI with 3 SDCM color consistency (+90 CRI optional)
- Standard 0-10V 1% dimming driver, ZDM; optional drivers available
- 120V - 277V Universal Input Volts, 347V option
- Minimum 50,000 hour lifetime at L70
- -20°C to 30°C Ambient Operating Temperature Range

OPTICS

- Precision spun architectural-grade reflector with integrated 'kicker plate'
- Reflectors available in Alzak® and painted finishes
- Distribution is free of streaks, striations and hotspots
- 60° Medium Wall Wash distribution
- 45° Cutoff

FRAME & MOUNTING

- Galvanized steel frame with integrated junction box featuring hinged access covers with spring retaining latches
- Vertically adjustable rigid formed mounting brackets that accept a variety of mounting bars with auxiliary nail holes and T-bar slots
- T-Bars included, suitable for joist spacing from 12" to 24"
- Supports straight conduit runs - (3) 3/4" knockouts
- Through branch wiring - (8) #12 AWG (4 in, 4 out), 90°C conductors
- Accessibility to all LED components from below ceiling
- Flush to the ceiling reflectors, secured by high quality friction clips

Listings

- ETL certified to UL 1598 and UL8750 requirements
- Tested according to LM-79 and LM-80 standards
- Energy Star® certified versions available (see Vantage Energy Star® guide for details)
- Suitable for damp locations under covered ceiling
- IC-Rated: insulation can be in direct contact with luminaire
- Buy American Act (BAA)

Warranty & Notes

- 5-year limited warranty on LED module and driver
- www.vantageltg.com/product-warranty
- Photometric tests performed by an accredited NVLP facility and in accordance to IESNA LM-79-2008 testing procedures

Lumens*

Nominal Lumens	Delivered Lumens	Wattage	Lumens Per Watt
750	772	8.88	86.94
1100	1132	15.4	73.51
1500	1543	20.5	75.27
2000	2058	25.3	81.34
3000	3087	32.2	95.87
4000	4116	58	70.97
5000	5145	58.5	87.95

All measured at 3500K with a standard medium distribution
*Actual Wattage/Lumens may vary.

Ordering Information

EXAMPLE: AIC4VOFLEDWWU-1130K-L4160-SGC-ZDM

Series	Voltage	Lumens	Kelvin (CCT)	Reflector	Finishes	Options**
AIC4VOFLEDWW	U - 120V-277V 1 - 120V 2 - 277V 3 - 347V (347V Step Down Transformer) *Must provide voltage when optional drivers are selected.	07 - 750 11 - 1100 15 - 1500 20 - 2000 30 - 3000 40 - 4000 50 - 5000 60 - 6000 70 - 7000	27K - 2700K 30K - 3000K 35K - 3500K 40K - 4000K 50K - 5000K TWC - Tunable White Full Color (2700K-6500K)* TWW - Turnable White Warm Color (1800K-4000K)* DTW - Dim-to-Warm (1800K-3000K)** *Available up to 2000 lumens **Available up to 5000 lumens	L4160 Wall Wash Open Reflector	SCL Specular Clear SGC Soft Glow Clear WHT White Matte *All trims supplied standard with white painted flange.	ZDM (standard) HCR PF EM17 DTDHL EM-CW-LED DMX GR-4-"xx" DCA GTD TDM SENSDYOC DMM BRGESEN DMMHO TWC TWW DTW

**Options Notes

ZDM - 0-10V 1% dimming driver (standard)
 DTD - 0-10V 0.1% dimming driver. (up to 4000 lumens)
 DTDHL - 0-10V 0.1% dimming driver. (use with 5000 - 7000 lumens)
 DMX - DMX with RDM dimming driver, requires DCA
 DCA - Daisy Chain Adaptor
 TDM - Triac (Forward Phase, 120V only) dimming driver. (up to 5000 lumens)
 DMM - Dali Driver (up To 5000 Lumens)
 DMMHO - Dali Driver (use with 6000 and 7000 Lumens)
 TWC - Tunable White Full Color 27k-65k, 90+ CRI With 0-10v Dual Control And 0.1% Dimming. (up to 2000 Lumens)
 TWW - Turnable White Warm Color 18k-40k, 90+ CRI With 0-10v Dual Control And 0.1% Dimming. (up to 2000 Lumens)
 DTW - Dim-to-Warm 18K-30K, 90CRI with 0-10V. (up to 5000 lumens)

HCR - High CRI, 90+ minimum. (Not available in 5000 Kelvin)
 PF - Polished Flange
 EM17 - Battery Backup W/remote Test Button & Indicator Light (for 800-5000 Lumen Luminaires)
 EM-CW-LED - Cold Weather Rated Emergency Driver
 GR-4-"xx" - 4" Goof Ring (inner Dimension - Specify outer dimension in place of 'xx')
 GTD - Generator Transfer Device
 SENS DYOC - Daylight/occupancy Sensor - remote mount
 BRGESEN - Bridge up to 400 Watts for Sesndyoc

Vantage reserves the right to change components, finishes or design details in any manner which does not alter the installed appearance or reduce performance and intended function.

4" Round, F-Class Gen V - IC-RATED

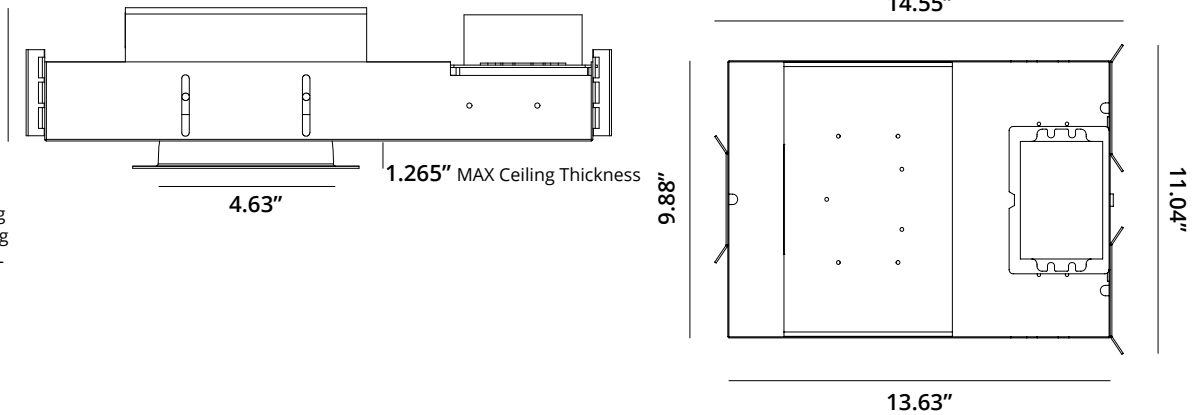
Open LED Wall Wash, 750-5000 Lumens - Shallow Housing

Dimensional Data

Ceiling Cut Out 4.63"

Overall Height
with 5/8" Ceiling
3.31" 3000L
3.61" 4000L & 5000L

Overall Height
Min. 3.14" with 1.25" Ceiling
Max. 3.75" With 0.25" Ceiling
Add 0.30" for 4000 & 5000L



Reflector Finishes



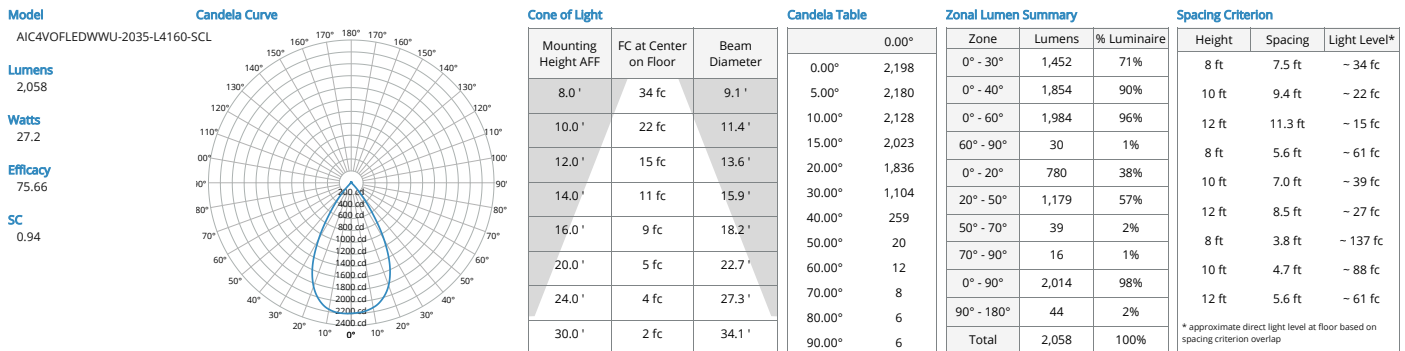
WHT
White Matte

SGC
Soft Glow Clear

SCL
Specular Clear

Photometry

L4160 - Medium Wall Wash Distribution



MULTIPLIER

CRI	Multiplier	Kelvin	Multiplier	Reflector Finish	Multiplier
80	1	2700K	0.939	SCL	1
90	0.8	3000K	0.975	SGC	0.95
		3500K	1	WHT	0.87
		4000K	1.035		
		5000K	1.098		

Vantage reserves the right to change components, finishes or design details in any manner which does not alter the installed appearance or reduce performance and intended function.