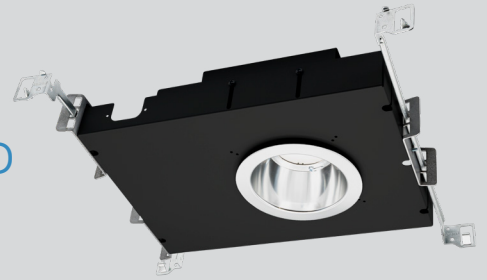


Part #	Prepared By
Project	Notes
Type	
Date	

4" Round, EXTREME SHALLOW F-Class Gen V - IC RATED Open, Recessed LED Downlight, 750-3000 Lumens



Features & Construction

ELECTRICAL SYSTEM

- 750 - 3000 lumens
- 2700K - 5000K CCT
- 80 CRI with 3 SDCM color consistency (+90 CRI optional)
- Standard 0-10V 1% dimming driver, ZDM; optional drivers available
- 120V - 277V Universal Input Volts, 347V option
- Minimum 50,000 hour lifetime at L70
- -20°C to 30°C Ambient Operating Temperature Range

OPTICS

- Precision spun architectural-grade reflector
- Reflectors available in Specular Clear, Soft Glow Clear & White Matte finishes
- Distribution is free of streaks, striations and hotspots
- 80° Wide distribution
- 45° Cutoff

FRAME & MOUNTING

- Galvanized steel frame with integrated junction box featuring hinged access covers with spring retaining latches
- Vertically adjustable rigid formed mounting brackets that accept a variety of mounting bars with auxiliary nail holes and T-bar slots
- T-Bars included, suitable for joist spacing from 12" to 24"
- Supports straight conduit runs - (3) 3/4" knockouts
- Through branch wiring - (8) #12 AWG (4 in, 4 out), 90°C conductors
- Accessibility to all LED components from below ceiling
- Flush to the ceiling reflectors, secured by screw and keyslot features

Listings

- ETL certified to UL 1598 and UL8750 requirements
- Tested according to LM-79 and LM-80 standards
- Energy Star® certified versions available (see Vantage Energy Star® guide for details)
- Damp Location and Wet Location Under Covered Ceiling (per NEC 410 & UL 1598)
- IC-Rated: insulation can be in direct contact with luminaire
- Buy American Act (BAA)

Warranty & Notes

- 5-year limited warranty on LED module and driver
- www.vantageltg.com/product-warranty
- Photometric tests performed by an accredited NVLP facility and in accordance to IESNA LM-79-2008 testing procedures

Lumens*

Nominal Lumens	Delivered Lumens	Wattage	Lumens Per Watt
750	685	8.88	77.14
1100	1176	15.4	76.36
1500	1604	20.5	78.24
2000	2253	25.3	89.05
3000	3087	32.2	95.87

All measured at 3500K with a standard wide distribution
*Actual Wattage/Lumens may vary.

Ordering Information

EXAMPLE: AIC4VOFLEDESU-1130K-W4060-SGC-ZDM

Series	Voltage	Lumens	Kelvin (CCT)	Reflector	Finishes	Options**
AIC4VOFLEDES	U - 120V-277V 1 - 120V 2 - 277V 3 - 347V (347V Step Down Transformer) *Must provide voltage when optional drivers are selected.	07 - 750 11 - 1100 15 - 1500 20 - 2000 30 - 3000	27K - 2700K 30K - 3000K 35K - 3500K 40K - 4000K 50K - 5000K	W4060 Wide 80° Open Reflector	SCL Specular Clear SGC Soft Glow Clear WHT White Matte *All trims supplied standard with white painted flange.	ZDM (Standard) HCR PF REM *For optional drivers consult factory

*Options Notes

ZDM - 0-10V 1% dimming driver (standard)
HCR - High CRI, 90+ minimum. Not available in 5000 Kelvin.
PF - Polished Flange
REM - Remote Battery Backup W/remote Test Button and Indicator Light

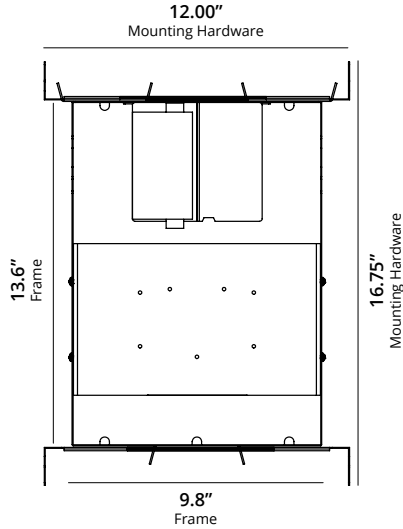
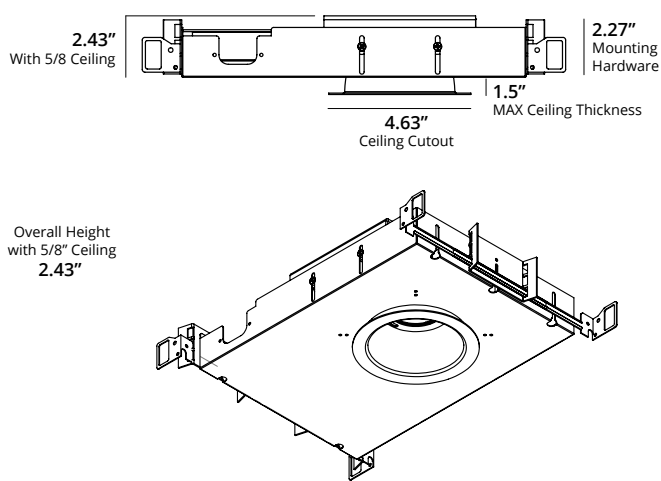
Reflector Finishes



4" Round, EXTREME SHALLOW F-Class Gen V

Open, Recessed LED Downlight, 750-3000 Lumens

Dimensional Data



Ceiling Thickness	Above Ceiling Height
1/4"	2.80"
3/8"	2.68"
1/2"	2.55"
5/8"	2.43"
1"	2.27"
1.25"	2.27"
1.5"	2.27"

Dimensional Data

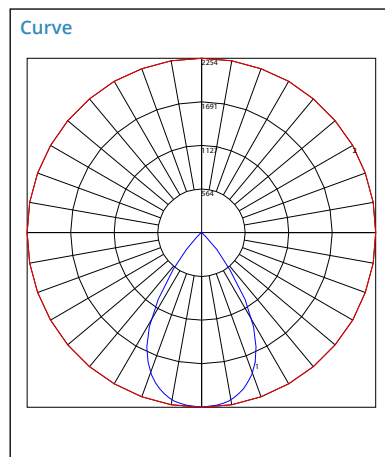
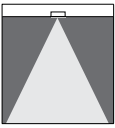
WIDE

Model
AIC4VOFLEDES-2035K-W4060-SCL

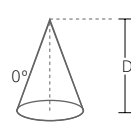
Lumens
2259.94

Efficacy
89

SC
1.00



Cone of Light



	Center Beam fc	Beam Width	
1.7	1,708	0.5	0.5
3.3	453	0.9	0.9
5.0	197	1.3	1.4
6.7	110	1.8	1.8
8.3	71.6	2.2	2.2
10.0	49.4	2.7	2.7

Candela Table	
Degrees Vertical	Candela
0.0	2254
1.0	2251
3.0	2243
5.0	2233
7.0	2221
9.0	2203
11.0	2175
13.0	2136
15.0	2088
17.0	2030
19.5	1944
22.5	1809
25.5	1637
29.0	1392
33.0	1033
37.5	601
42.5	288
47.5	79
55.0	9
65.0	6
75.0	5
85.0	4
90.0	0

Zonal Lumen Summary		
Zone	Lumens	% Luminaire
45	29006	29006
55	1754	1754
65	1587	1587
75	2159	2159
85	5130	5130

MULTIPLIER

CRI	Multiplier	Kelvin	Multiplier	Reflector Finish	Multiplier
80	1	2700K	0.939	SCL	1
90	0.8	3000K	0.975	SGC	0.95
		3500K	1	WHT	0.87
		4000K	1.035		
		5000K	1.098		

Vantage reserves the right to change components, finishes or design details in any manner which does not alter the installed appearance or reduce performance and intended function.