



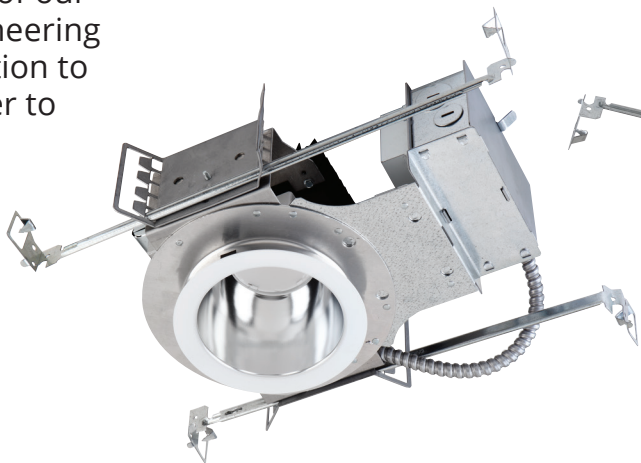
Performance.  
Delivered.

## Vantage LED Lighting Systems



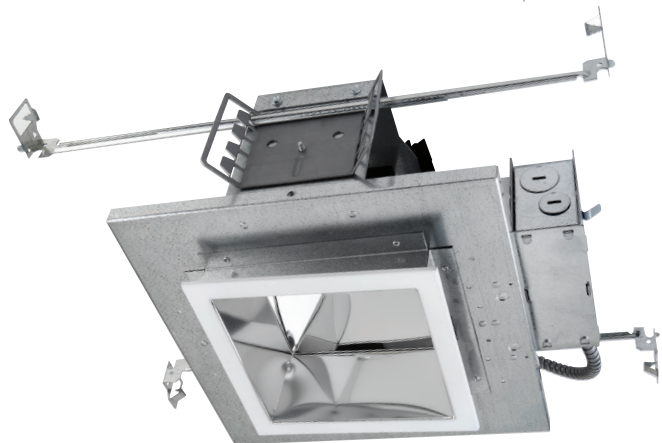
# VANTAGE LED

Vantage LED is our collection of advanced solid state lighting luminaires, born out of our commitment to engineering excellence and attention to the details that matter to lighting specifiers.



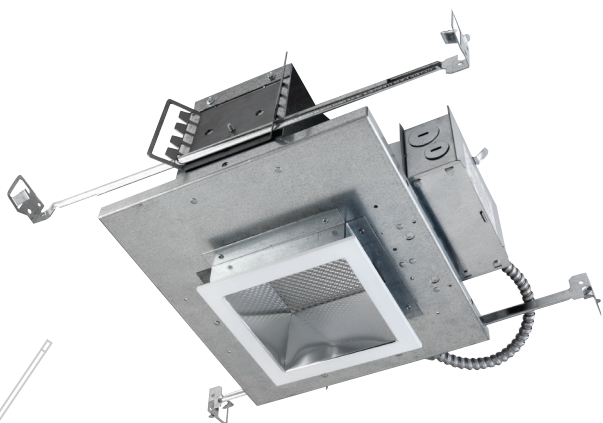
## Round Aperture

Downlights,  
Adjustable and Wall Wash;  
Open and Lensed



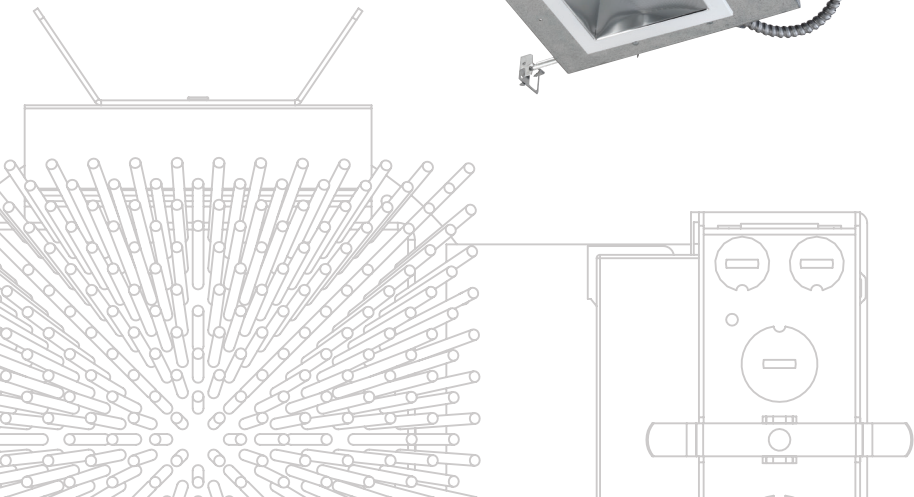
## Square Aperture

Downlights and Wall Wash;  
Open and Lensed






## Cylinders

Ceiling, Pendant  
and Wall Mount



# Product Collection

## At a Glance

	Round Aperture Downlights, Adjustable and Wall Wash	Square Aperture Downlights and Wall Wash	Cylinders
LED Module	Bridgelux® Vero Philips® Fortimo Sylvania® PrevaLED	Philips Fortimo	Bridgelux Vero Philips Fortimo Sylvania PrevaLED
Aperture	4" 6" 7" 8" 10"	4" 6"	8" 10" 12"
Rated Lumen Output	1100 1500 2000 3000 4000 5000 6000 8000	1100 1500 2000 3000	1100 1500 2000 3000 4000 5000 6000 8000
CCT	2700K 3000K 3500K 4000K 5000K	2700K 3000K 3500K 4000K	2700K 3000K 3500K 4000K 5000K
CRI	80-90	80	80-90
Reflector/Trim Options	Open Baffled Lensed Lensed Baffled Wall Wash	Open Lensed Lensed Wall Wash	Open
Finishes	Specular Clear Alzak Soft Glow Clear Etched Clear White Reflector Black Baffle, White Baffle	Specular Clear Alzak Soft Glow Clear Etched Clear White Reflector	Specular Clear Alzak Soft Glow Clear Etched Clear White Reflector Black Baffle, White Baffle
Certifications	 Suitable for Damp Locations. Wet Locations Under Covered Ceilings.	 Suitable for Damp Locations. Wet Locations Under Covered Ceilings.	 Indoor Only

All products come with a 5 year warranty.  
Retrofit and Remodel fixtures also available.



# Powered by World-Class Technology & Engineering

Vantage LED uses state-of-the-art LED engines and drivers from the industry's leading brands to deliver superior performance and value. Our LED systems are powered by innovative technologies, including:



## Bridgelux Vero

- Chip-on-Board (CoB) technology delivers an LED package with industry-leading 120 LPW module efficacy and lumen/\$ performance
- Tight color control down to 2 Standard Deviation Color Matching (SDCM) and CRI up to 90
- Proprietary lateral chip structure, now in its 11th generation, offers superior reliability and long lifetime of up to 50,000 hours to reduce total cost of ownership



## Philips Fortimo

- Remote Phosphor Technology delivers outstanding 110+ LPW module efficacy and quality white light with 3 SDCM color control
- Designed, developed and tested in conjunction with standard Philips Advance Xitanium driver for optimum reliability, built-in thermal protection, and 0-10V dimming
- Excellent lumen maintenance, color consistency and a long lifetime of up to 50,000 hours significantly reduces total cost of ownership



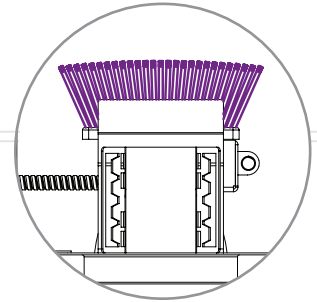
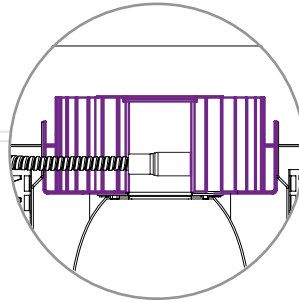
## Sylvania PrevaLED Cube

- Square, low-profile module with integrated optics delivers smooth, homogenous, near Lambertian light
- Optimally paired with standard Osram Optotronic driver to deliver up to 120 LPW module efficacy and full dimming capability
- Long lifetime of up to 50,000 hours significantly reduces total cost of ownership



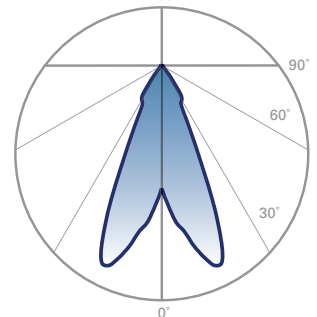
## Engineering Excellence

**Passively Cooled** – our luminaires rely primarily on well-engineered heat sinks for proper thermal management.

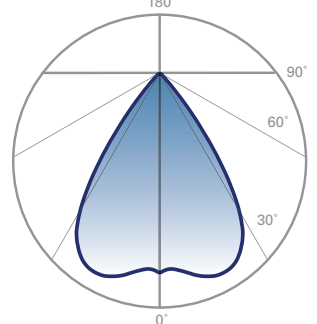


**Optical Performance** – Vantage Lighting offers a broad range of reflectors, finish treatments and lens options, providing lighting design professionals with unmatched flexibility to develop customized lighting solutions for each project. Finishes available range from highly Specular Clear Alzak to highly diffuse etched trims, all available in a variety of colors from clear to black. Standard lens options include Fresnel and Prismatic in both glass and acrylic media, along with the latest generation of highly efficient polymer films that produce a variety of distribution patterns ranging from narrow to very wide.

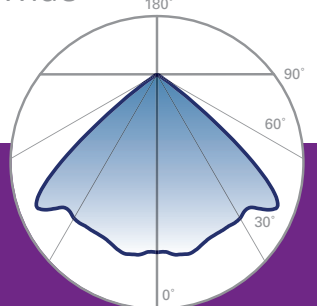
Narrow



Medium



Wide



# Performance. Delivered.

## Your Projects Deserve State-of-the-Art Technology and Performance.

Our LED luminaires are rated up to 8000 lumens and deliver quality white light with up to 99 LPW system efficacy, efficiently directed where needed.

## Performance and Value. Have both.

We offer a complete line of performance fixtures at tiered price points to help meet a wide range of project budgets. Don't settle for VE, specify Vantage LED.




### Get LED fixtures FAST.

**Vantage Velocity** is the fastest quick-ship program in the lighting industry, bringing you our most popular luminaires from factory to job site in as little as 3 days, not weeks.

State-of-the-Art Performance for a tremendous Value, delivered in days — that's Vantage **Performance. Delivered.**



Photo credit :  
Tahanto School  
Charles Mayer Photography



Vantage Lighting is a leading manufacturer of specification-grade recessed and surface downlights for commercial and institutional applications. Vantage offers a complete line of energy-efficient new construction, retrofit and remodel luminaires, with a variety of lamp and control options, aperture sizes, styles, mounting types, light distributions, and lumen packages. For over 20 years, specifiers have come to rely on Vantage for our ability to meet project design objectives, budgets, and schedule by consistently developing, manufacturing, and shipping quality lighting products on time.

[www.vantageltg.com](http://www.vantageltg.com)

Cover Photo Credit :  
Coalition School  
Photography : SGM Photography



76 Community Avenue  
Plainfield, CT 06374  
p: (860) 564 4512  
f: (860) 564 4854

