



F•Class Gen V EXPANDED

NOW Available
Square Apertures, Wall Washers,
Adjustables, Luna Drop Opal Acrylic,
Vandal-Resistant Housings &
Retrofits/Remodelers



750-7000 Lumens
Next-generation, High-lumen
4", 6", 8" & 10" Architectural Downlights
Extreme Shallow and IC Housing Options

Product Shown: AIC4VOFLED

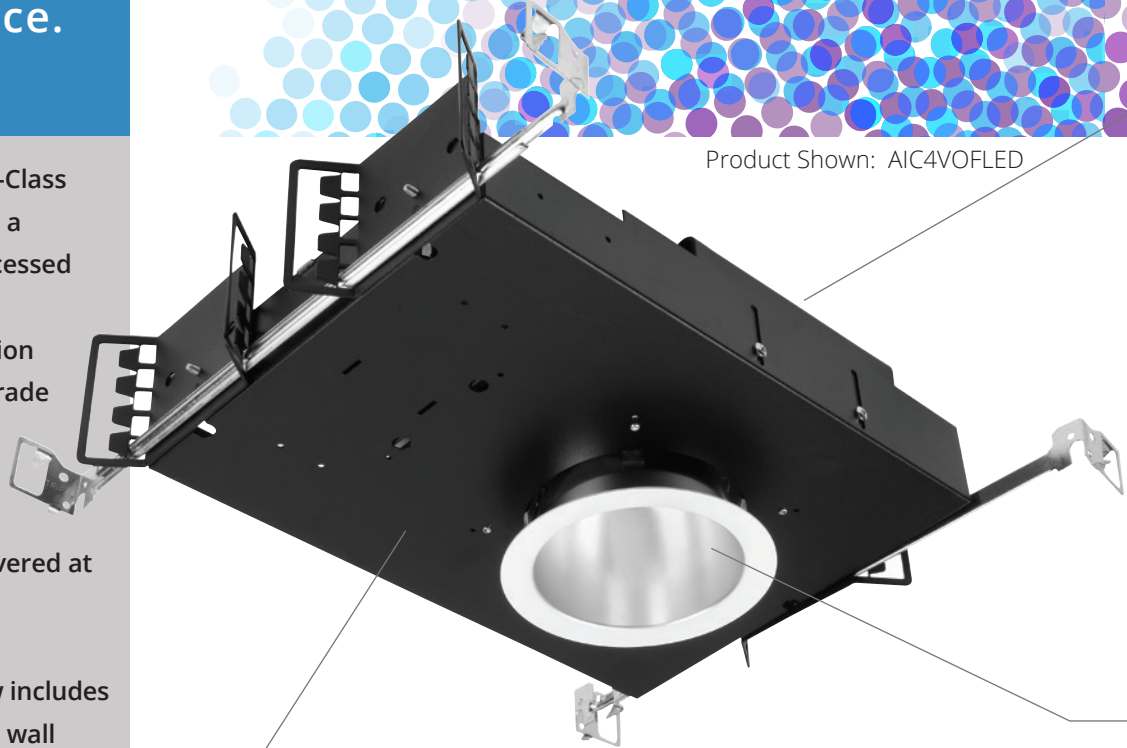
Versatility. Value. Velocity.

F•Class Gen V

Versatile Performance.

Vantage Lighting's newly expanded F-Class Gen V architectural series represents a significant leap in performance in recessed lighting. Combining industry-leading 750-7000 lumen output range, precision BeamShaper™ optics, specification-grade reflectors and trims, and smooth dimming down to black, the F-Class Gen V family provides designers state-of-the-art lighting tools, all delivered at an exceptional value.

Broader than ever, the collection now includes square apertures, specification-grade wall washers and adjustables, decorative Luna drop opal acrylic trims, vandal-resistant housings and retrofits/remodelers.

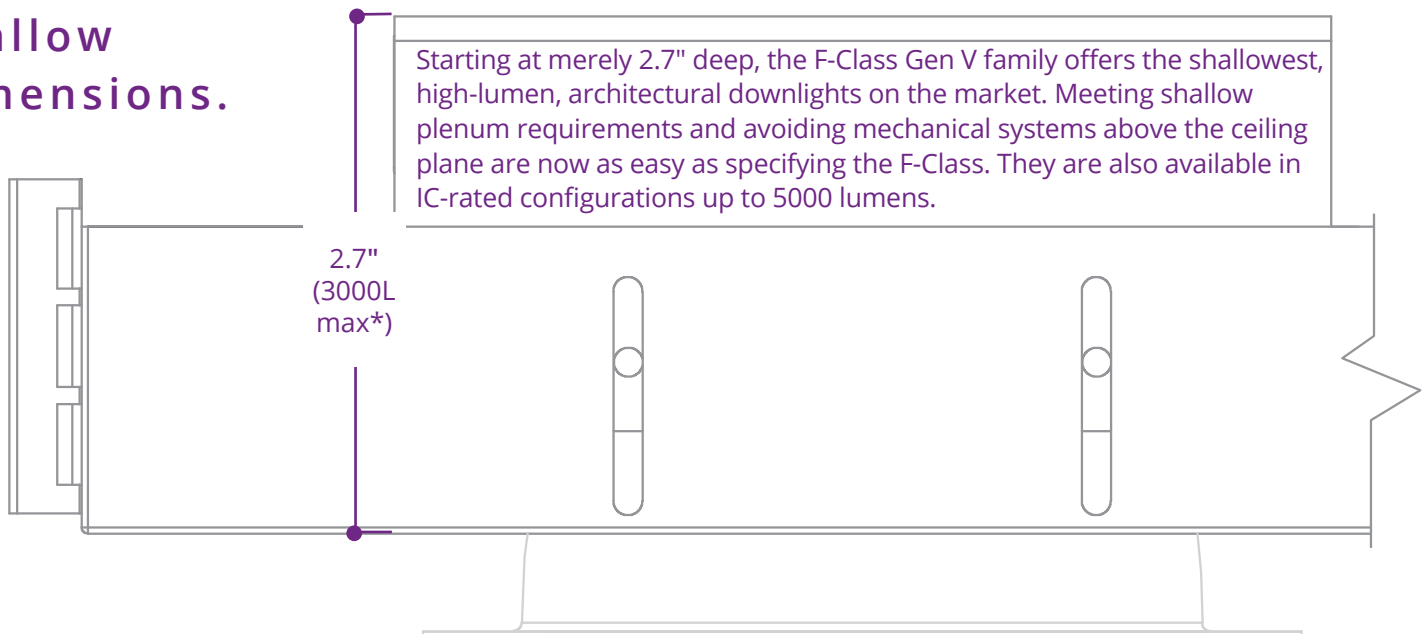


Product Shown: AIC4VOFLED

Laser-cut, Precision-engineered Frame

For high-quality construction at reduced costs while simultaneously minimizing material wastes and associated environmental impact

Shallow Dimensions.



Starting at merely 2.7" deep, the F-Class Gen V family offers the shallowest, high-lumen, architectural downlights on the market. Meeting shallow plenum requirements and avoiding mechanical systems above the ceiling plane are now as easy as specifying the F-Class. They are also available in IC-rated configurations up to 5000 lumens.

* Fixture depth = 3" at 4000L and 5000L outputs

Advanced Aluminum and Graphite Cooling Technology

For superior thermal management and long system rated life of 50,000 hours at 70% of initial lumen output ($L_{70} \geq 50,000$)



4" Round

A4VOFLED Open Downlight

A4VEFLED Lensed Downlight

AIC4VOFLED IC-Rated, Open Downlight

AIC4VEFLED IC-Rated, Lensed Downlight



6" Round

A6VOFLED Open Downlight

A6VEFLED Lensed Downlight

A6VOFLEDES Open Downlight, Extreme Shallow

A6VWOFLED Wide-Distribution, Open Downlight

AIC6VOFLED IC-Rated, Open Downlight

AIC6VEFLED IC-Rated, Lensed Downlight

AIC6VOFLEDES IC-Rated, Open Downlight, Extreme Shallow



8" & 10" Round

A8VOFLED 8" Open Downlight

A8VEFLED 8" Lensed Downlight

A8VOFLEDES 8" Open Downlight, Extreme Shallow

A8VWOFLED 8" Wide-Distribution, Open Downlight

AIC8VOFLED 8" IC-Rated, Open Downlight

AIC8VEFLED 8" IC-Rated, Lensed Downlight

AIC8VOFLEDES 8" IC-Rated, Open Downlight, Extreme Shallow

A10VOFLEDU 10" Open Downlight

A10VEFLEDU 10" Lensed Downlight

High-Flux LED Engine, 750–7000 Lumens

Delivers up to 107 LPW module efficacy and tight color control within 3-step MacAdam Ellipses, ensuring efficient and quality lighting solutions for both standard- and high-ceiling applications

Proprietary BeamShaper™ Optics

For maximum design flexibility, with 10–80° beam angles available at 10° increments

Spec-grade Reflector and Trim Finishes

Enable matching ceiling finishes with ease

Standard High-Performance LED Driver

Provides 0–10V dimming down to 1%, for a reliable, flicker-free lighting control in a wide range of architectural settings



6", 8" & 10" Round Retrofit/Remodeler

A6VOFLEDU (RET or RMD)

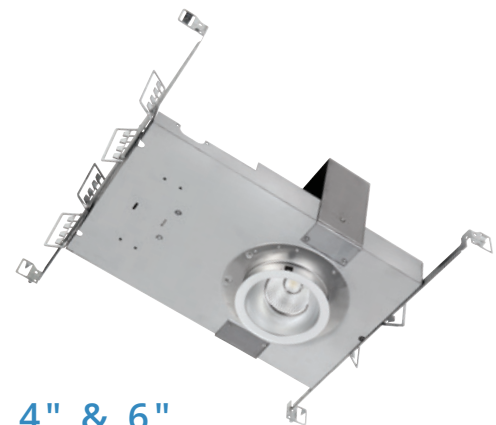
6" Open Downlight **Up to 5000 lumens**

A8VOFLEDU (RET or RMD)

8" Open Downlight **Up to 5000 lumens**

A10VOFLEDU (RET or RMD)

10" Open Downlight **Up to 5000 lumens**



4" & 6" Round Adjustable

➤ **Up to 3000 lumens**

➤ **33° vertical and 360° horizontal adjustability**

➤ **27° and 40° beam options**

A4VOFLEDADJ 4" Open Adjustable

A6VOFLEDADJ 6" Open Adjustable

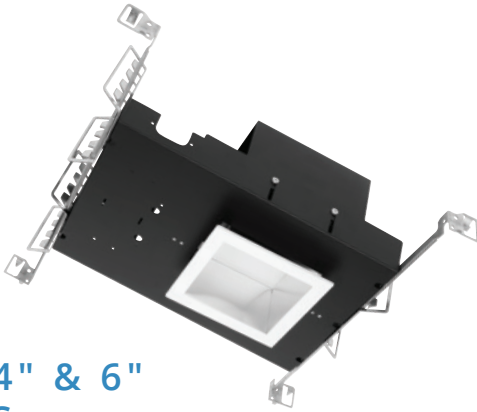
A8VOFLEDADJ 8" Open Adjustable

All products come with a 5-year warranty.
Meets 'Buy American' requirements (41 U.S.C. 8301-8305)
Manufactured and Listed to UL1598, ETL and CSA standards.
Suitable for Damp Locations. Wet Location under covered ceiling.
Indoor use only.



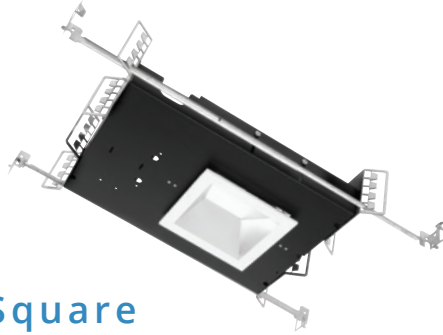
F•Class Gen V

Expanded Collection



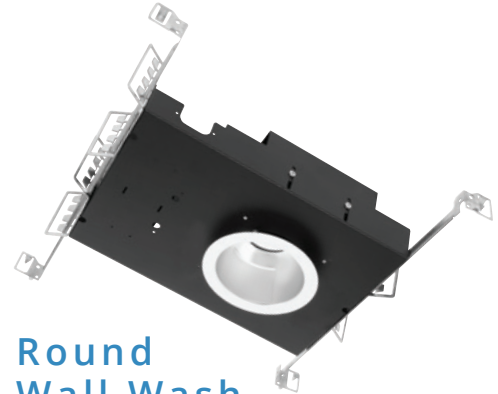
4" & 6" Square

- SQ44VEFLED** 4"x4" Enclosed Square
- SQ44VOFLED** 4"x4" Open Square
- SQ66VOFLED** 6"x6" Open Square
- SQ66VEFLED** 6"x6" Enclosed Square
- SQIC44VEFLED** 4"x4" Enclosed IC-Rated Square
- SQIC44OFLED** 4"x4" Open IC-Rated Square
- SQIC66VEFLED** 6"x6" Enclosed IC-Rated Square
- SQIC66VOFLED** 6"x6" Open Square IC-Rated



Square Wall Wash

- > Up to 7000 lumens**
- SQ44VEFLEDWW** 4"x4" Enclosed Square Wall Wash
- SQ66VEFLEDWW** 6"x6" Enclosed Square Wall Wash
- SQIC44VEFLEDWW** 4"x4" Enclosed Square IC-Rated Wall Wash
- SQIC66VEFLEDWW** 6"x6" Enclosed Square IC-Rated Wall Wash



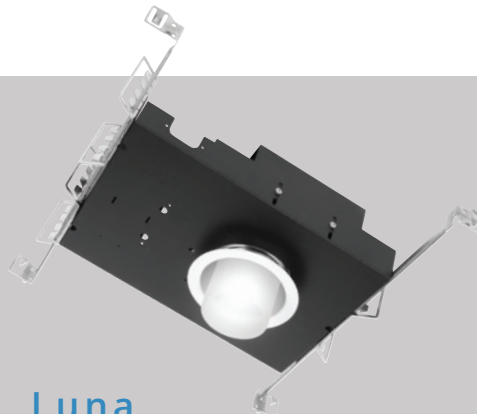
Round Wall Wash

- > Up to 7000 lumens**
- A4VOFLEDWW** 4" Open Wall Wash
- A6VOFLEDWW** 6" Open Wall Wash
- A8VOFLEDWW** 8" Open Wall Wash
- AIC4VOFLEDWW** 4" Open IC-Rated Wall Wash
- AIC6VOFLEDWW** 6" Open IC-Rated Wall Wash
- AIC8VOFLEDWW** 8" Open IC-Rated Wall Wash



Vandal Resistant

- > Up to 7000 lumens**
- VVR6VEFLED** 6" Enclosed Vandal Resistant
- VVR8VEFLED** 8" Enclosed Vandal Resistant
- VVRIC6VEFLED** 6" Enclosed IC-Rated Vandal Resistant
- VVRIC8VEFLED** 8" Enclosed IC-Rated Vandal Resistant



Luna

- > Up to 5000 lumens**

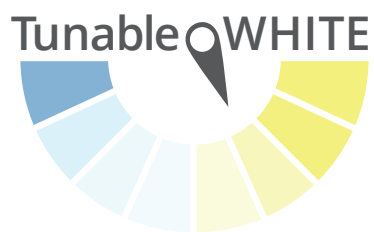
Round

- VGC4VEFLED** 4" Enclosed Luna
- VGC6VEFLED** 6" Enclosed Luna
- VGC8VEFLED** 8" Enclosed Luna
- VGCIC4VEFLED** 4" Enclosed IC-Rated Luna
- VGCIC6VEFLED** 6" Enclosed IC-Rated Luna
- VGCIC8VEFLED** 8" Enclosed IC-Rated Luna



Square

- VGCSQ44VEFLED** 4"x4" Enclosed Square Luna
- VGCSQ66VEFLED** 6"x6" Enclosed Square Luna
- VGCSQIC44VEFLED** 4"x4" Enclosed Square IC-Rated Luna
- VGCSQIC66VEFLED** 6"x6" Enclosed Square IC-Rated Luna



Tunable White

Vantage Lighting's simple and affordable Tunable White option is designed to bring personalized lighting to the masses by enabling users to: mimic the dynamic qualities of daylight in building interiors to support circadian functions; effortlessly adjust the color temperature between 2700K-5000K for optimal illumination, especially for the ever-changing displays in retail; and tune the lighting to meet a wide range of visual task requirements and individual preferences. The system delivers beautiful, high-quality light at 90 CRI, ensuring true color reproduction. Intelligent dual 0-10V control provides simple, easy-to-install dimming that delivers smooth, flicker-free performance down to black.

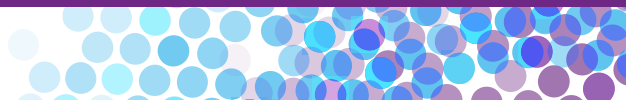


6", 8" AND 10" ROUND RETROFIT/REMODELER

Upgrade the lighting in existing spaces with Vantage Lighting's complete line of high-performance, round retrofit/remodeler downlights. Offered in outputs up to 5000 lumens, color temperatures from 2700K to 5000K, and dimming options down to dark, this product line is the industry-leading solution for retrofit and remodel applications.

Product Shown: RMD-A6VOFLEDU

F•Class Gen V
Control Options



F•Class Gen V

Performance Options

		750	1100	1500	2000	3000	4000	5000	6000	7000
LUMEN OUTPUTS:	IC RATED	●	●	●	●	●	●	●		
	NON-IC	●	●	●	●	●	●	●	●	●
	Extreme Shallow IC RATED^	●	●	●	●	●	●	●		
	Extreme Shallow NON-IC*	●	●	●	●	●	●	●		
CCT:	Tunable White	<div>2700K 3000K 3500K 4000K 5000K</div> <div>2700K - 5000K</div>								
CRI:		80+ 90+								
DISTRIBUTIONS:		<div><div>10°</div><div>20°</div><div>30°</div><div>40°</div><div>50°</div><div>60°</div><div>70°</div><div>80°</div></div> <div>Round Adjustables beam options: 27° or 40°</div>								
DIMMING:		0-10V, 0.1% 0-10V, 1% DMX EldoLED Dim to Dark, 0% Lutron Hi-Lume® Fade-to-Black, 1% Lutron 2-wire Lutron 3-wire Triac, 10%								
LENSES:		Prismatic Acrylic	Clear Glass	Prismatic Glass	Clear Polycarbonate	Frosted Polycarbonate				
FINISHES:		Soft Glow Clear	Specular Clear	White Painted						

* 6" and 8" fixtures only
[^] 8" fixtures only



181 Narragansett Park Drive
 East Providence, RI 02916
 p: (860) 564 4512

www.vantageltg.com