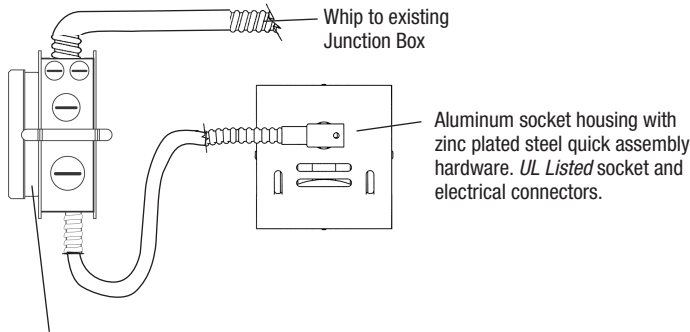


A r c h i t e c t u r a l G r a d e

Job Name _____

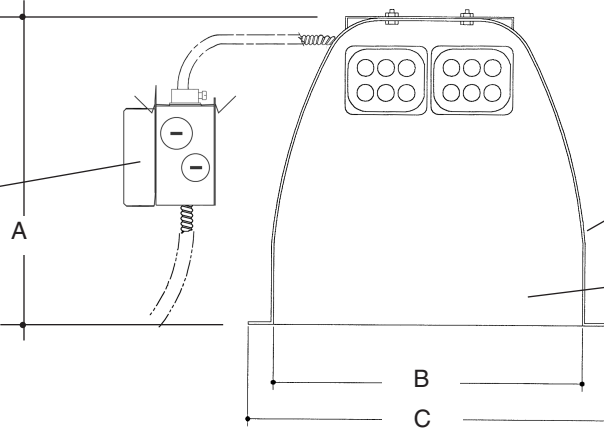
Type _____



H.F. 2 LT RETROFIT KIT OPEN

Heavy gauge electrogalvanized steel junction box, prewired and grounded with easy access from below, listed for through branch circuit wiring.

Electronic ballast, Class P, 50/60 HZ-120/277, Programmed Start, thermally protected, 98% Power Factor, 1.00 Ballast Factor, <10% THD, Class A sound rated. Minimum starting temperature -18°C/0°F.



	A	B	C
6"	5 1/2"	6 1/4"	7 1/2"
7"	6 1/2"	6 1/2"	7 3/4"
8"	7 1/2"	7 1/2"	8 3/4"
10"	9 1/2"	9 1/2"	10 3/4"

Electrogalvanized plated steel frame.
Heavy gauge spun aluminum low iridescent reflector with multi-groove baffle and self trimming white painted flange. Polished Flange available.

Rough in Kit – Horizontal Fluorescent 2-Lamp (Compact Fluorescent Twin or Quad Tube)

Catalog Number **RAXHF2** _____

	Wattage	Ballast	Voltage	Options
RA10HF2				
RA8HF2				
RA7HF2•	42W MAX. PLT	E	1	EM
RA6HF2•	32W PLT	DA	2	F
	26W DTT, PLT	DL	3	EMI
	18W DTT, PLT		4	
	13"W TT, DTT			

Ballast		
E	Electronic	(4 Pin Lamp)
DA	Dimming - Advance Mark X	(4 Pin Lamp)
DL	Dimming - Lutron	(4 Pin Lamp)
*	13 Watt Advance Mark VII Only	
Voltage		
1	120 Volts	
2	277 Volts	
3	347 Volts (Electronic Ballast only)	
4	208 Volts (Electronic Ballast only)	
Options ▲		
EM	Emergency Battery	
F	Fused	
EMI	Internal Mounted Emergency Test Switch	

• 1 Lamp only for Triple Tube - 2x26 DTT MAX

Electronic Multi-Tap Ballast 120V Thru 277V Factory Standard

Finishing Kit – Horizontal Fluorescent Open Reflector

Catalog Number _____

	Finish	Options
10600		
8600		
7600	SCL	PF
6600	SGO	
	WHT	

Finish (Factory Standard)

SCL	Specular Clear "Alzak" with White Flange
SGO	Specular Gold "Alzak" with White Flange
WHT	White Reflector with White Flange

Options ▲

PF	High Polished Flange
-----------	----------------------

Features

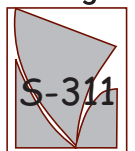
Manufactured and Listed to UL 1598, ETL and CSA standards.
Suitable for Damp Locations
Wet location under covered ceiling



▲ See Options and Finishes pages for a list of additional finishes and equipment.

Vantage reserves the right to change components, finishes or design details in any manner which does not alter the installed appearance or reduce performance and intended function.

Vantage



76 Community Avenue Plainfield, CT 06374
voice (860)564.4512 fax (860)564.4854
www.vantageitg.com

11/09

Luminaires