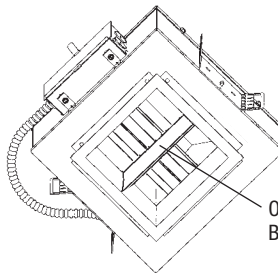
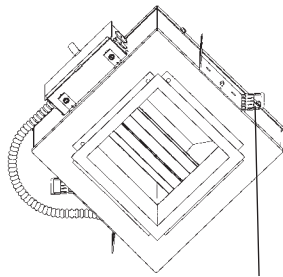


A r c h i t e c t u r a l S q u a r e s

Job Name _____

Type _____



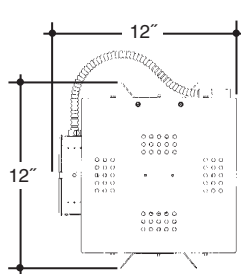
Optional Cross Baffle. (S35)

**6"x6"
H.F. 1 LT
OPEN
SQUARE**

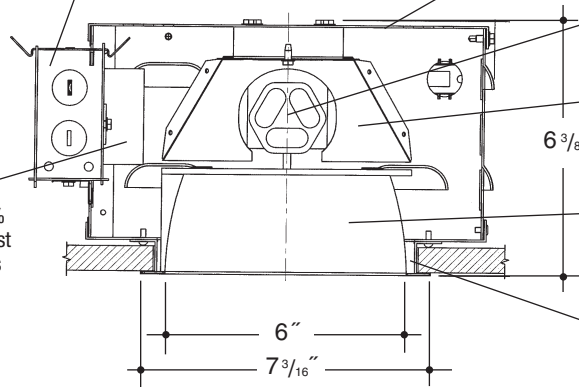
Adjustable height electrogalvanized plated steel mounting ears with cutouts for various mounting methods. Standard bars (included) are innovative and incorporate rigid formed cross sections, joist positioning tabs, integral nails, auxiliary nailholes, T-Bar slots and holes for locking bars to T-Bar using #8 self-tapping screws (by others). Bars extend 14"-24". Ears will also accept Caddy Bar #520 for fast installation in T-Bar ceilings, bars extend 27".

Heavy gauge electrogalvanized steel junction box, prewired and grounded with easy access from below. Listed for through branch circuit wiring.

Housing is formed of heavy gauge electrogalvanized steel with integral venting for cool operation and extended lamp life.



Electronic ballast, Class P, 50/60 HZ-120/277, Programmed Start, thermally protected, 98% Power Factor, 1.00 Ballast Factor, <10% THD, Class A sound rated. Minimum starting temperature -18°C/0°F. *UL Listed* component.



Aluminum socket housing with quick assembly hardware. *UL Listed* socket and electrical connectors.

Precision formed aluminum specular clear low iridescent "Alzak" upper reflector.

Square "Alzak" aperture trim, die formed, mitted corners, self trimming flange and positive spring retention clips.

Integral 3/4" plaster frame.

Rough In Kit – 6"x6" Square Horizontal Fluorescent 1-Lamp (Compact Fluorescent Triple or Quad Tube)

Catalog Number **VGS66HF1**

VGS66HF1

Wattage

Ballast

Voltage

Options

57W MAX. DT/E
42W PLT
32W PLT
26W DTT, PLT
18W DTT, PLT

E
DA
DL

1
2
3
4

EM*
EMI

Ballast

E

DA

DL

Voltage

1

2

3

4

Options ▲

EM*

Electronic (4 Pin Lamp)

Dimming - Advance Mark X (4 Pin Lamp)

Dimming - Lutron (4 Pin Lamp)

120 Volts

277 Volts

347 Volts (Electronic Ballast Only)

208 Volts

Emergency Battery

* (TOP COVER REMOVABLE FROM BELOW FOR EM ACCESS)

Internal Mounted Emergency Test Switch

Electronic Multi-Tap Ballast 120/277V Factory Standard

Finishing Kit – 6"x6" Square Horizontal Open Reflector

Catalog Number **VGS6600**

VGS6600

Finish

Options

SCL
SGO
SGC
ECL
WHT

PF
S35*

Finish (Factory Standard)

SCL

Specular Clear "Alzak" with White Flange

SGO

Specular Gold "Alzak" with White Flange

SGC

Soft Glow Clear "Alzak" (Semi-Spec) with White Flange

ECL

Etched Clear "Alzak" (Haze) with White Flange

WHT

White with White Flange

Options ▲

PF

High Polished Flange

S35*

Parabolic Cross Baffle

* EMI Not Available with Parabolic Cross Baffle

Features

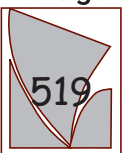
Manufactured and Listed to UL 1598, ETL and CSA standards.
Suitable for Damp Locations
Wet location under covered ceiling



▲ See Options and Finishes pages for a list of additional finishes and equipment.

Vantage reserves the right to change components, finishes or design details in any manner which does not alter the installed appearance or reduce performance and intended function.

Vantage



Luminaires

76 Community Avenue Plainfield, CT 06374

voice (860)564.4512 fax (860)564.4854

www.vantageeltg.com

01/10

Photometric Information

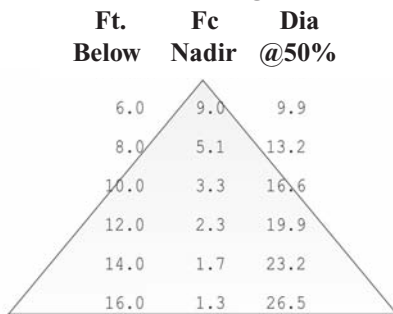
Product Number: VGS66HF126E1/2/6600SCL
Cylinder: 6"x6", Horizontal Mount Fluorescent
Reflector: 6" Horizontal Clear "Alzak" Reflector
LTL Test Number: 11952
Lamp(s) Source: (1) 26W DTT 4pin lamp rated at 1800 lumens
Total Luminaire Efficiency: 49.2%
CIE Type: Direct
Luminaire Spacing Criterion: 1.4/1.7/1.2
Luminous Diameter: 6.0

Product Number: VGS66HF132E1/2/6600SCL
Cylinder: 6"x6", Horizontal Mount Fluorescent
Reflector: 6" Horizontal Clear "Alzak" Reflector
LTL Test Number: 11953
Lamp(s) Source: (1) 32W DTT 4pin lamp rated at 2400 lumens
Total Luminaire Efficiency: 54.1%
CIE Type: Direct
Luminaire Spacing Criterion: 1.1/1.8/1.2
Luminous Diameter: 6.0

Zonal Lumen Summary

ZONE	LUMENS	%LAMP	%FIXTURE
0- 30	340	18.9	38.4
0- 40	594	33.0	67.0
0- 60	871	48.4	98.3
0- 90	886	49.2	100.0
90-180	0	0.0	0.0
0-180	886	49.2	100.0

Cone of Light



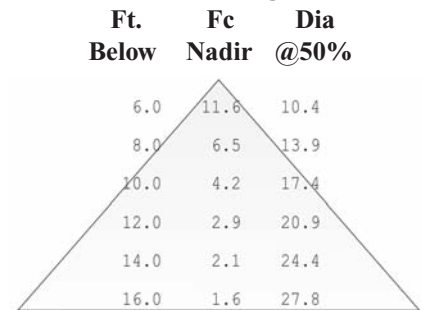
Coefficients of Utilization

RC	80				70				50				30				10				0
RW	70	50	30	10	70	50	30	10	50	30	10	50	30	10	50	30	10	50	30	10	0
0	59	59	59	59	57	57	57	57	55	55	55	52	52	52	50	50	50	49	49	49	49
1	55	54	52	51	54	53	51	50	51	50	49	49	48	47	47	46	46	45	45	45	45
2	52	49	47	45	51	48	46	44	47	45	43	45	44	43	44	43	42	41	41	41	41
3	49	45	42	40	48	44	42	39	43	41	39	42	40	38	41	39	38	37	37	37	37
4	45	41	38	35	44	40	37	35	39	37	35	38	36	34	37	35	34	33	33	33	33
5	42	37	34	31	41	37	33	31	36	33	31	35	32	30	34	32	30	29	29	29	29
6	39	34	30	28	38	34	30	28	33	30	27	32	29	27	31	29	27	26	26	26	26
7	36	31	27	25	36	30	27	24	30	27	24	29	26	24	28	26	24	23	23	23	23
8	34	28	24	21	33	27	24	21	27	24	21	26	23	21	26	23	21	20	20	20	20
9	31	25	21	19	30	25	21	19	24	21	18	23	21	18	23	20	18	17	17	17	17
10	29	22	19	16	28	22	19	16	22	19	16	21	18	16	21	18	16	15	15	15	15

Zonal Lumen Summary

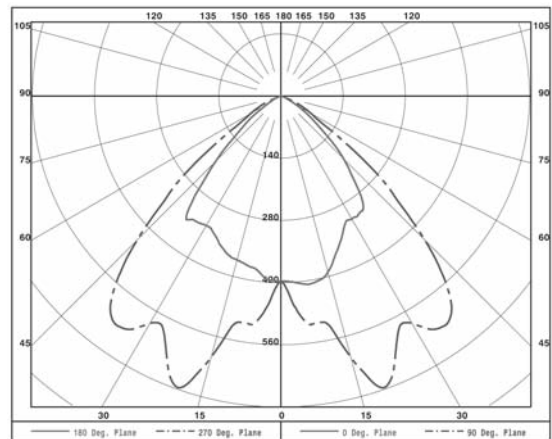
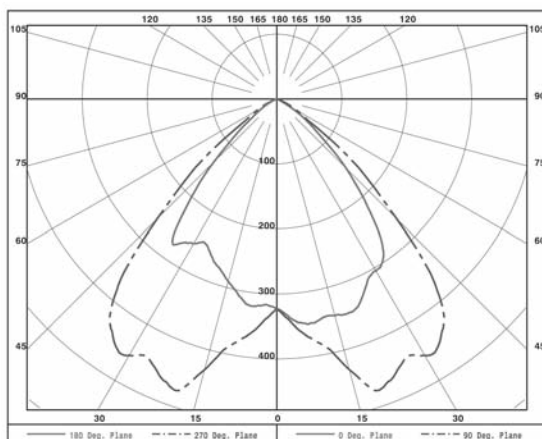
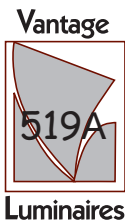
ZONE	LUMENS	%LAMP	%FIXTURE
0- 30	456	19.0	35.2
0- 40	805	33.5	62.0
0- 60	1271	53.0	98.0
0- 90	1297	54.1	100.0
90-180	0	0.0	0.0
0-180	1297	54.1	100.0

Cone of Light



Coefficients of Utilization

RC	80				70				50				30				10				0
RW	70	50	30	10	70	50	30	10	50	30	10	50	30	10	50	30	10	50	30	10	0
0	64	64	64	64	63	63	63	63	60	60	60	58	58	58	55	55	55	54	54	54	54
1	61	59	57	56	59	58	56	55	55	54	53	53	52	52	52	51	50	49	49	49	49
2	57	54	51	49	56	53	50	48	51	49	47	49	48	46	48	46	45	44	44	44	44
3	53	49	46	43	52	48	45	43	47	44	42	45	43	41	44	42	41	40	40	40	40
4	49	44	41	38	48	44	40	38	42	39	37	41	39	37	40	38	36	35	35	35	35
5	46	40	36	33	45	40	36	33	38	35	33	37	35	32	37	34	32	31	31	31	31
6	42	36	32	29	41	36	32	29	35	32	29	34	31	29	33	31	29	28	28	28	28
7	39	33	29	26	38	32	28	26	32	28	25	31	28	25	30	27	25	24	24	24	24
8	36	29	25	22	35	29	25	22	28	25	22	28	24	22	27	24	22	21	21	21	21
9	33	26	22	19	32	26	22	19	25	22	19	25	21	19	24	21	19	18	18	18	18
10	30	24	20	17	30	23	19	17	23	19	17	22	19	17	22	19	17	16	16	16	16



Photometric Information

Product Number: VGS66HF142E1/2/6600SCL
Cylinder: 6"x6", Horizontal Mount Fluorescent
Reflector: 6" Horizontal Clear "Alzak" Reflector
LTL Test Number: 11954
Lamp(s) Source: (1) 42W DTT 4pin lamp rated at 3200 lumens
Total Luminaire Efficiency: 52.6%
CIE Type: Direct
Luminaire Spacing Criterion: 1.2/1.9/1.2
Luminous Diameter: 6.0

Zonal Lumen Summary

ZONE	LUMENS	%LAMP	%FIXTURE
0- 30	570	17.8	33.9
0- 40	1006	31.4	59.8
0- 60	1640	51.2	97.4
0- 90	1683	52.6	100.0
90-180	0	0.0	0.0
0-180	1683	52.6	100.0

Cone of Light

Ft. Fc Dia
Below Nadir @50%



Coefficients of Utilization

RC	80				70				50				30				10				0	
	70	50	30	10	70	50	30	10	50	30	10	50	30	10	50	30	10	50	30	10		
0	63	63	63	63	61	61	61	61	58	58	58	56	56	56	54	54	54	53				
1	59	57	56	54	58	56	55	53	54	53	52	52	51	50	50	49	49	48				
2	55	52	49	47	54	51	49	47	49	47	46	48	46	45	46	45	44	43				
3	51	47	44	41	50	46	43	41	45	42	40	44	42	40	42	41	39	38				
4	48	43	39	36	47	42	39	36	41	38	36	40	37	35	39	37	35	34				
5	44	39	35	32	43	38	34	32	37	34	31	36	33	31	35	33	31	30				
6	41	35	31	28	40	34	31	28	33	30	28	33	30	27	32	29	27	26				
7	38	31	27	24	37	31	27	24	30	27	24	29	26	24	29	26	24	23				
8	35	28	24	21	34	28	24	21	27	23	21	26	23	21	26	23	21	20				
9	32	25	21	18	31	25	21	18	24	20	18	23	20	18	23	20	18	17				
10	29	22	18	16	29	22	18	16	22	18	16	21	18	16	21	18	16	15				

