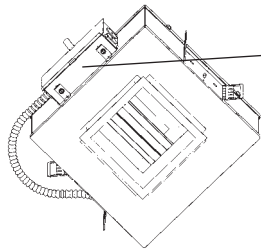


Architectural Squares

Job Name _____

Type _____



Heavy gauge electrogalvanized steel junction box, prewired and grounded with easy access from below. Listed for through branch circuit wiring.

Housing is formed of heavy gauge electrogalvanized steel with integral venting for cool operation and extended lamp life.

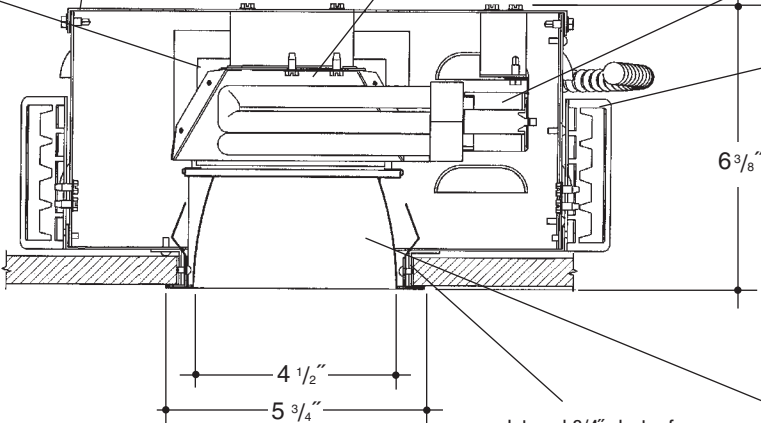
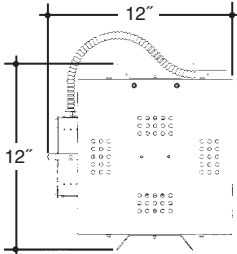
Precision formed aluminum specular clear low iridescent "Alzak" upper reflector.

**4"x4"
H.F. 1 LT
OPEN
SQUARE**

Electronic ballast, Class P, 50/60 HZ-120/277, Programmed Start, thermally protected, 98% Power Factor, 1.00 Ballast Factor, <10% THD, Class A sound rated. Minimum starting temperature -18°C/0°F. *UL Listed component.*

Aluminum socket housing with quick assembly hardware. *UL Listed* socket and electrical connectors.

Adjustable height electrogalvanized plated steel mounting ears with cutouts for various mounting methods. Standard bars (included) are innovative and incorporate rigid formed cross sections, joint positioning tabs, integral nails, auxiliary nailholes, T-Bar slots and holes for locking bars to T-Bar using #8 self-tapping screws (by others). Bars extend 14"-24". Ears will also accept Caddy Bar #520 for fast installation in T-Bar ceilings, bars extend 27".



Integral 3/4" plaster frame.

Square "Alzak" aperture trim, die formed, mitred corners, self trimming flange and positive spring retention clips.

Rough In Kit – 4.5"x4.5" Square Horizontal Fluorescent 1-Lamp (Compact Fluorescent Triple or Quad Tube)

Catalog Number **VGS44HF1**

VGS44HF1	Wattage	Ballast	Voltage	Options
	42W MAX. PLT	E	1	EM*
	32W PLT	DA	2	EMI
	26W DTT, PLT	DL	3	
	18W DTT, PLT		4	

Ballast		
E	Electronic	(4 Pin Lamp)
DA	Dimming - Advance Mark X	(4 Pin Lamp)
DL	Dimming - Lutron	(4 Pin Lamp)
Voltage		
1	120 Volts	
2	277 Volts	
3	347 Volts (Electronic Ballast Only)	
4	208 Volts	
Options ▲		
EM*	Emergency Battery	
	*(TOP COVER REMOVABLE FROM BELOW FOR EM ACCESS)	
EMI	Internal Mounted Emergency Test Switch	

Electronic Multi-Tap Ballast 120/277V Factory Standard

Finishing Kit – 4.5"x4.5" Square Horizontal Open Reflector

Catalog Number **VGS4400**

VGS4400	Finish	Options
	SCL	PF
	SGO	
	SGC	
	ECL	
	WHT	

Finish (Factory Standard)

SCL	Specular Clear "Alzak" with White Flange
SGO	Specular Gold "Alzak" with White Flange
SGC	Soft Glow Clear "Alzak" (Semi-Spec) with White Flange
ECL	Etched Clear "Alzak" (Haze) with White Flange
WHT	White with White Flange

Options ▲

PF	High Polished Flange
----	----------------------

Features

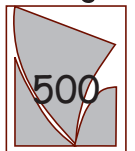
Manufactured and Listed to UL 1598, ETL and CSA standards.
Suitable for Damp Locations
Wet location under covered ceiling



▲ See Options and Finishes pages for a list of additional finishes and equipment.

Vantage reserves the right to change components, finishes or design details in any manner which does not alter the installed appearance or reduce performance and intended function.

Vantage



Luminaires

76 Community Avenue Plainfield, CT 06374
voice (860)564.4512 fax (860)564.4854
www.vantageeltg.com

01/10

Photometric Information

Product Number: VGS44HF126E1/2/4400SCL

Cylinder: 4"x4", Horizontal Mount Fluorescent

Reflector: 4" Horizontal Clear "Alzak" Reflector

LTL Test Number: 11946

Lamp(s) Source: (1) 26W DTT 4pin lamp rated at 1800 lumens

Total Luminaire Efficiency: 45.9%

CIE Type: Direct

Luminaire Spacing Criterion: 1.2/1.4/0.9

Luminous Diameter: 4.5

Zonal Lumen Summary

ZONE	LUMENS	%LAMP	%FIXTURE
0- 30	378	21.0	45.8
0- 40	603	33.5	73.0
0- 60	819	45.5	99.2
0- 90	826	45.9	100.0
90-180	0	0.0	0.0
0-180	826	45.9	100.0

Cone of Light

Ft. Fc Dia
Below Nadir @50%



Coefficients of Utilization

RC	80				70				50				30				10				0			
	RW	70	50	30	10	0	70	50	30	10	0	50	30	10	0	50	30	10	0	50	30	10	0	
0	55	55	55	55	53	53	53	53	51	51	51	49	49	49	47	47	47	46						
1	52	50	49	48	51	49	48	47	47	47	46	46	45	44	44	44	43	42						
2	49	46	44	43	48	46	44	42	44	42	41	43	41	40	41	40	39	39						
3	46	43	40	38	45	42	40	38	41	39	37	40	38	36	38	37	36	35						
4	43	39	36	34	42	39	36	34	38	35	33	37	35	33	36	34	33	32						
5	40	36	33	30	39	35	32	30	34	32	30	34	31	30	33	31	29	29						
6	38	33	30	28	37	33	30	27	32	29	27	31	29	27	31	28	27	26						
7	35	30	27	25	34	30	27	25	29	26	24	29	26	24	28	26	24	23						
8	33	27	24	22	32	27	24	22	27	24	22	26	23	22	26	23	22	21						
9	30	25	21	19	29	25	21	19	24	21	19	24	21	19	23	21	19	18						
10	28	23	19	17	27	22	19	17	22	19	17	22	19	17	21	19	17	16						

Product Number: VGS44HF132E1/2/4400SCL

Cylinder: 4"x4", Horizontal Mount Fluorescent

Reflector: 4" Horizontal Clear "Alzak" Reflector

LTL Test Number: 11947

Lamp(s) Source: (1) 32W DTT 4pin lamp rated at 2400 lumens

Total Luminaire Efficiency: 38.0%

CIE Type: Direct

Luminaire Spacing Criterion: 1.1/1.9/1.1

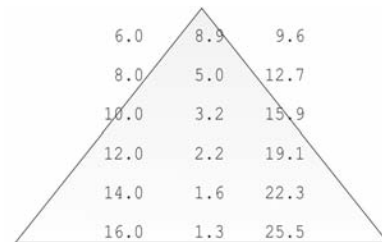
Luminous Diameter: 4.5

Zonal Lumen Summary

ZONE	LUMENS	%LAMP	%FIXTURE
0- 30	323	13.5	35.4
0- 40	552	23.0	60.6
0- 60	899	37.5	98.7
0- 90	911	38.0	100.0
90-180	0	0.0	0.0
0-180	911	38.0	100.0

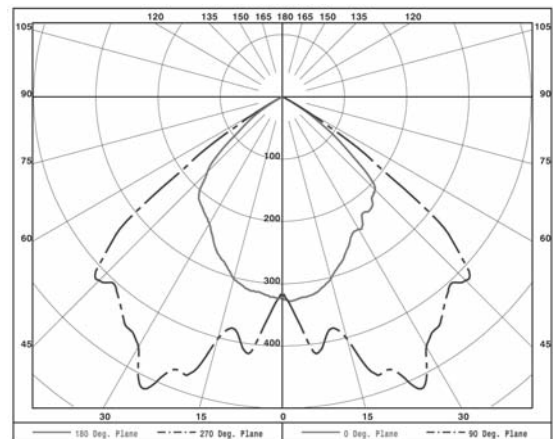
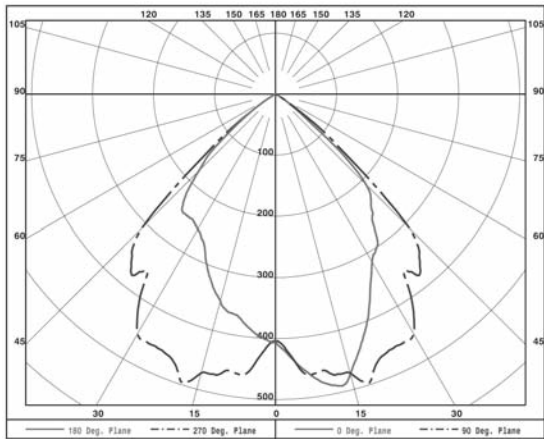
Cone of Light

Ft. Fc Dia
Below Nadir @50%



Coefficients of Utilization

RC	80				70				50				30				10				0			
	RW	70	50	30	10	0	70	50	30	10	0	50	30	10	0	50	30	10	0	50	30	10	0	
0	45	45	45	45	44	44	44	44	42	42	42	40	40	40	39	39	39	38						
1	43	41	40	39	42	40	39	38	39	38	37	37	37	36	36	36	35	34						
2	40	38	36	34	39	37	35	34	36	34	33	35	33	32	34	33	32	31						
3	37	34	32	30	36	34	32	30	33	31	29	32	30	29	31	30	28	28						
4	35	31	28	27	34	31	28	26	30	28	26	29	27	26	28	27	25	25						
5	32	28	25	23	31	28	25	23	27	25	23	26	24	23	26	24	23	22						
6	30	25	23	21	29	25	22	20	25	22	20	24	22	20	23	21	20	19						
7	27	23	20	18	27	23	20	18	22	20	18	22	19	18	21	19	18	17						
8	25	21	18	16	25	20	17	16	20	17	15	19	17	15	19	17	15	15						
9	23	18	15	13	23	18	15	13	18	15	13	17	15	13	17	15	13	13						
10	21	17	14	12	21	16	14	12	16	13	12	16	13	12	15	13	12	11						



Photometric Information

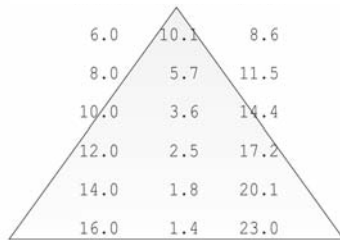
Product Number: VGS44HF142E1/2/4400SCL
Cylinder: 4"x4", Horizontal Mount Fluorescent
Reflector: 4" Horizontal Clear "Alzak" Reflector
LTL Test Number: 11948
Lamp(s) Source: (1) 42W DTT 4pin lamp rated at 3200 lumens
Total Luminaire Efficiency: 26.4%
CIE Type: Direct
Luminaire Spacing Criterion: 0.9/1.6/1.0
Luminous Diameter: 4.5

Zonal Lumen Summary

ZONE	LUMENS	%LAMP	%FIXTURE
0- 30	323	10.1	38.2
0- 40	543	17.0	64.3
0- 60	837	26.2	99.2
0- 90	844	26.4	100.0
90-180	0	0.0	0.0
0-180	844	26.4	100.0

Cone of Light

Ft. Fc Dia
Below Nadir @50%



Coefficients of Utilization

RC	80				70				50				30				10				0
	70	50	30	10	70	50	30	10	50	30	10	50	30	10	50	30	10	50	30	10	
0	31	31	31	31	31	31	31	31	29	29	29	28	28	28	27	27	27	26			
1	30	29	28	27	29	28	28	27	27	27	26	26	26	25	25	25	24				
2	28	26	25	24	27	26	25	24	25	24	23	24	23	23	23	23	22				
3	26	24	23	21	26	24	22	21	23	22	21	22	21	20	22	21	20				
4	24	22	20	19	24	22	20	19	21	20	18	20	19	18	20	19	18				
5	23	20	18	17	22	20	18	17	19	18	16	19	17	16	18	17	16				
6	21	18	16	15	21	18	16	15	17	16	15	17	16	15	17	15	14				
7	19	16	14	13	19	16	14	13	16	14	13	15	14	13	15	14	13				
8	18	15	13	11	18	15	13	11	14	13	11	14	12	11	14	12	11				
9	16	13	11	10	16	13	11	10	13	11	10	12	11	10	12	11	10				
10	15	12	10	9	15	12	10	9	12	10	9	11	10	9	11	10	9				

