

I n s t a l l a t i o n I n s t r u c t i o n s

VERTICAL COMPACT FLUORESCENT

Reflector Kit Installation

1) Take the socket cup housing that is attached to the junction box by a flex conduit (Figure A) and slide the socket cup into the reflector neck holding the two spring clips that protrude from the cup and secure them to the neck slots of the reflector. (Figure B) The fixture must have 3" of clearance from all insulation (IC Rated fixtures excluded).

Warning - Power Must be OFF before energizing or relamping fixture.

2) Next insert the lamp before energizing to avoid ballast damage. Once that is done push the reflector in through the ceiling cutout so that the four positioned roto clips bite the reflector securing it from falling out. (Figure C)

Fixture Maintenance Instructions

- 1) Replace lamps every 8000 hours or when needed.
- 2) Clean reflector with a damp cloth.

End-of-Life Circuit

All CFL and twin tube electronic ballasts have a standard end-of-life circuit which reduces overheating of broken lamp cathodes and minimizes potential of lamp melting or cracking.

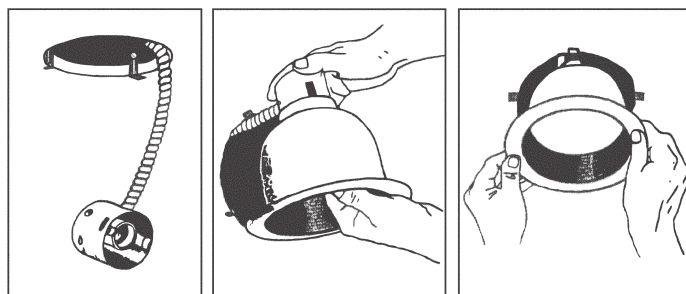
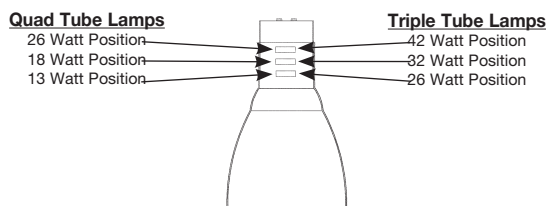


Figure A

Figure B

Figure C



7" and 8" Lamp Positioning

▲ See Options and Finishes pages for a list of additional finishes and equipment.

Vantage reserves the right to change components, finishes or design details in any manner which does not alter the installed appearance or reduce performance and intended function.

