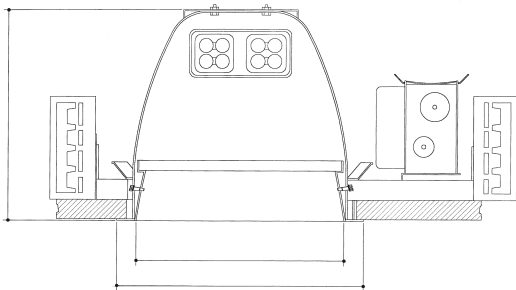


Installation Instructions

Job Name _____

Type _____

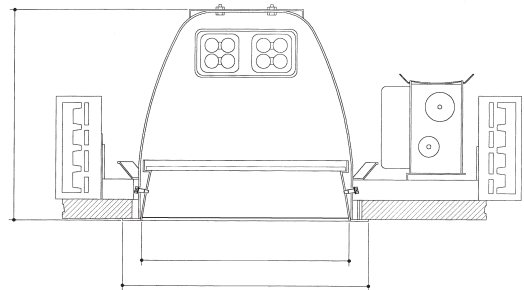
TMR TAMPER-RESISTANT



Lens sealed to holder and tamper-resistant screws.

- Screws:** Threaded, pan-head screws with two holes, screwed into nut, screwed into splay and reflector for vandal resistance.
- Silicone:** Clear, high-quality 2-base silicone (glue and hardener) for sealing.
- Epoxy:** Clear, high-quality epoxy used to secure nut to reflector.
- Tool:** Tamper-specific screwdriver included.

TMP TAMPER-PROOF



Lens sealed to holder and tamper-resistant screws with a clear polycarbonate underlay safety lens.

- Screws:** Threaded, pan-head screws with two holes, screwed into nut, screwed into splay and reflector for vandal resistance.
- Silicone:** Clear, high-quality 2-base silicone (glue and hardener) for sealing.
- Epoxy:** Clear, high-quality epoxy used to secure nut to reflector.
- Lens:** Polycarbonate clear underlay for increased vandal resistance.
- Tool:** Tamper-specific screwdriver included.

Features

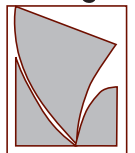
Manufactured and Listed to UL 1598,
ETL and CSA standards.
Suitable for Damp Locations
Wet location under covered ceiling



▲ See Options and Finishes pages for a list of additional finishes and equipment.

Vantage reserves the right to change components, finishes or design details in any manner which does not alter the installed appearance or reduce performance and intended function.

Vantage



Luminaires

76 Community Avenue Plainfield, CT 06374
voice (860) 564.4512 fax (860) 564.4854
www.vantageitg.com

09/08