

HORIZONTAL COMPACT FLUORESCENT

Horizontal CF Installation Instructions

Standard luminaires come in two different parts, the first is the frame in kit. The second is the reflector kit. The luminaire frame in kit can be installed into many different type of ceilings with many different thicknesses but the maximum thickness is limited to a two inch thick ceiling. The Frame in kit must be installed by a qualified Electrician. The heavy gauge junction box is pre-wired with a ground wire. The junction box is positioned for easy ballast access and removal. The junction box has many different knockout holes for different length power wiring. The fixture must have 3" of clearance from all insulation (IC Rated fixtures excluded).

Frame In Kit Installation

1) Extend the plated steel hanger bars, supplied by Vantage Lighting, Inc., to snugly meet the trusses. One method to secure the hanger bars is by drilling a standard drywall screw through the hanger bars into the trusses. Proceed to secure the second set of hanger bars so that the luminaire is securely mounted.

2) Once the line is wired, by a qualified electrician, to the ballast and the ceiling is installed, the aperture hole must be cut out to the inside dimension provided by the fixture cutsheet. Warning- The ceiling hole cannot exceed the flange diameter or the reflector kit will not cover the ceiling cut out properly.

Reflector Kit Installation

1) Take the socket housing that is attached to the junction box by a flex conduit and slide the housing into the reflector so that the sockets are facing the window of the reflector. Each socket housing is supplied with two self tapping reflector mounting screws these must be placed through the reflector to screw into the socket housing thus securing the reflector to the socket housing.

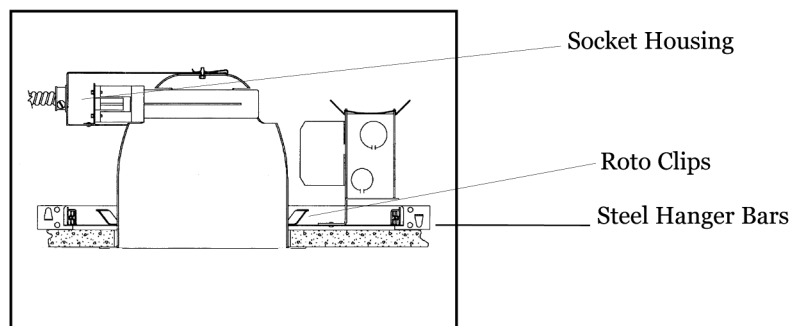
Warning - Power Must be OFF before energizing or relamping fixture.

2) Next insert the lamp before energizing to avoid ballast damage. Once that is done push the reflector in through the ceiling cutout so that the four positioned roto clips bite the reflector securing it from falling out.

Maintenance Instructions

1) Replace lamps every 8000 hours or when needed.

2) Clean Reflector with a soft damp cloth to remove unwanted blemishes.



▲ See Options and Finishes pages for a list of additional finishes and equipment.

Vantage reserves the right to change components, finishes or design details in any manner which does not alter the installed appearance or reduce performance and intended function.

