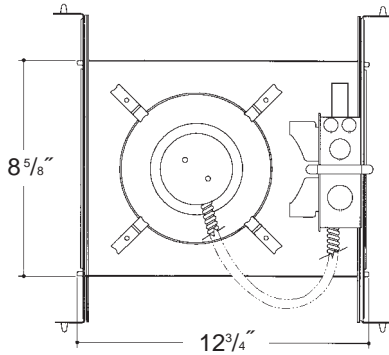


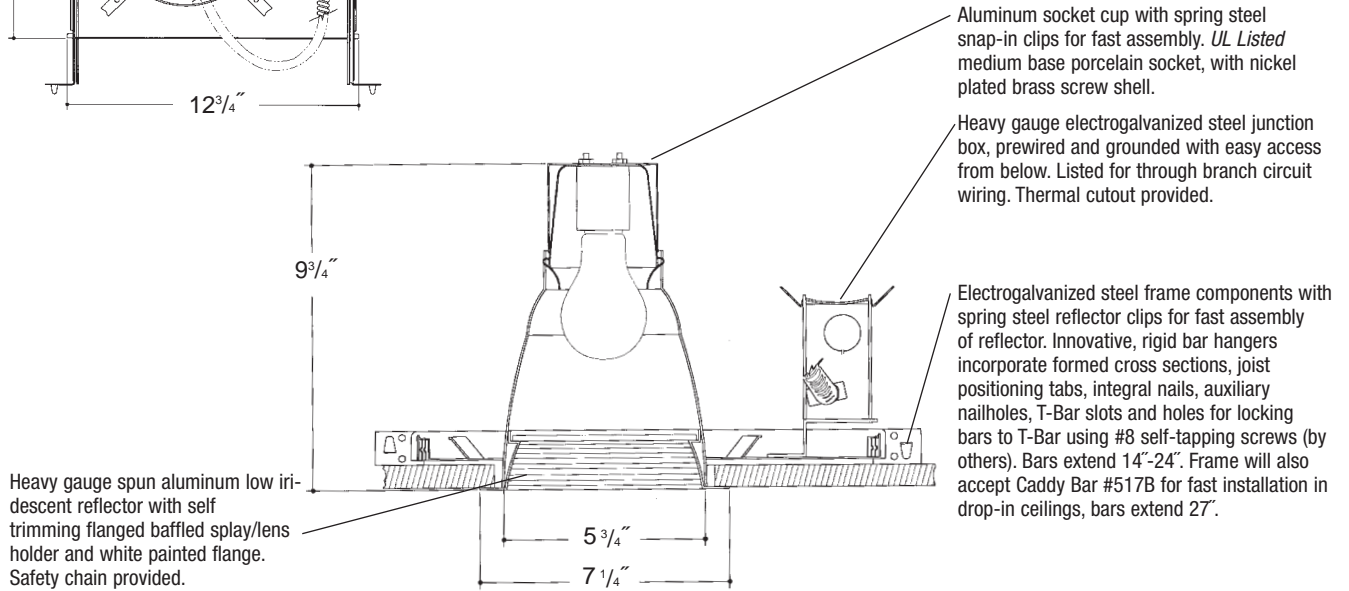
C o m m e r c i a l G r a d e

Job Name _____

Type _____



6" LENSED BAFFLED INCANDESCENT



Rough in Kit – 6" Incandescent (100W A21; 100W A19)

Catalog Number **6INC** _____

6INC

Wattage

Options

100W MAX. A21
100W A19

277V SD
R

Options ▲

277V SD
R

Step Down Transformer 277V to 120V Remodeler

Finishing Kit – 6" Incandescent Lensed Reflector – clear reflector standard with Black or White Baffled Splay and self trim flange

Catalog Number **60** _____

60

Lens

Finish

Options

6021 - Tempered Clear Lens
6024 - Tempered Prismatic Lens (C73 Pattern)
6026 - Tempered Fresnel Lens
6028 - Tempered Flat Alba Lens
6029 - Tempered Drop Opal Lens

SCL/BL
SCL/WH
WHT/WH
WHT/BL

WL

Finish (Factory Standard)

SCL/BL Specular Clear "Alzak" with Black Baffled Splay
SCL/WH Specular Clear "Alzak" with White Baffled Splay
WHT/WH White Reflector with White Baffled Splay
WHT/BL White Reflector with Black Baffled Splay

Options ▲

WL

Sealed Lens and Gasketed Flange

Features

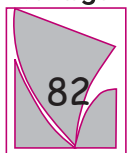
Manufactured and Listed to UL 1598, ETL and CSA standards.
Suitable for Damp Locations
Wet location under covered ceiling



▲ See Options and Finishes pages for a list of additional finishes and equipment.

Vantage reserves the right to change components, finishes or design details in any manner which does not alter the installed appearance or reduce performance and intended function.

Vantage



Luminaires

76 Community Avenue Plainfield, CT 06374
voice (860)564.4512 fax (860)564.4854
www.vantageltg.com

06/07