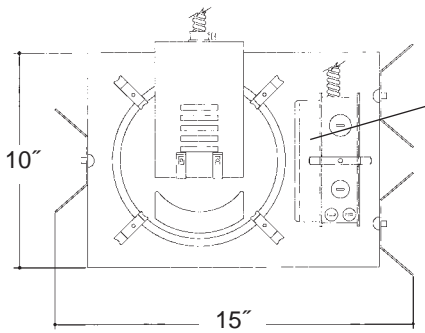


Job Name _____

Type _____

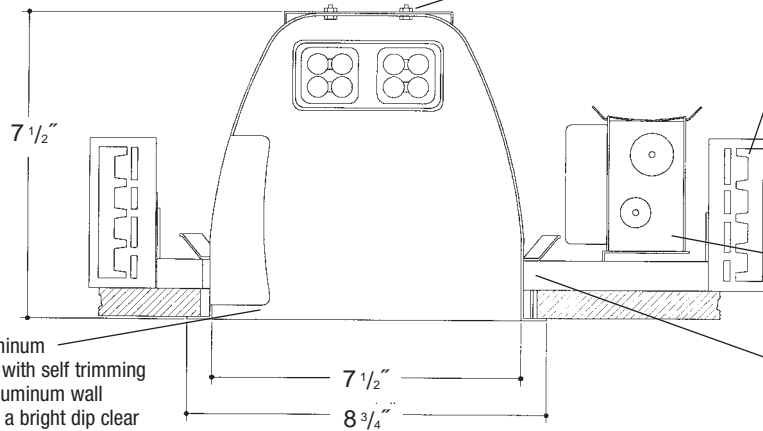


Electronic ballast, Class P, 50/60 HZ-120/277, Programmed Start, thermally protected, 98% Power Factor, 1.00 Ballast Factor, <10% THD, Class A sound rated. Minimum starting temperature -18°C/0°F.
Magnetic ballast, High Power Factor, thermally protected, minimum starting temperature 10°C/50°F.
UL Listed component.

8" H.F. OPEN WALL WASH

Aluminum socket housing with zinc plated steel quick assembly hardware. *UL Listed* socket and electrical connectors.

Adjustable height electrogalvanized plated steel mounting ears with cutouts for various mounting methods. Standard bars (included) are innovative and incorporate rigid formed cross sections, joist positioning tabs, integral nails, auxiliary nailholes, T-Bar slots and holes for locking bars to T-Bar using #8 self-tapping screws (by others). Bars extend 14"-24". Ears will also accept Caddy Bar #520 for fast installation in T-Bar ceilings, bars extend 27".



Heavy gauge spun aluminum low iridescent reflector with self trimming white painted flange. Aluminum wall washing kicker plate in a bright dip clear finish. Polished Flange available.

Heavy gauge electrogalvanized steel junction box, prewired and grounded with easy access from below, listed for through branch circuit wiring.

Electrogalvanized plated steel frame.

Rough in Kit – 8" Horizontal Fluorescent 2-Lamp (Compact Fluorescent Twin or Quad Tube)

Catalog Number **A8HF2**

A8HF2	Wattage	Ballast	Voltage	Options
	26W MAX. DTT	E	1	EM
	18W DTT	H	2	F
	13*W TT, DTT	DA	3	R
		DL	4	PR
				EMI

Ballast		
E	Electronic	(4 Pin Lamp)
H	High Power Factor	(2 Pin Lamp)
DA	Dimming - Advance Mark X	(4 Pin Lamp)
DL	Dimming - Lutron	(4 Pin Lamp)
*	13 Watt Advance Mark VII Only	
Voltage		
1	120 Volts	
2	277 Volts	
3	347 Volts (Electronic Ballast only)	
4	208 Volts (Electronic Ballast Only)	
Options ▲		
EM	Emergency Battery	
F	Fused	
R	Remodeler	
PR	Plaster Ring	
EMI	Internal Mounted Emergency Test Switch	

1-Lamp – Replace **A8HF2** with **A8HF1**

Electronic Multi-Tap Ballast 120V Thru 277V Factory Standard

Finishing Kit – 8" Horizontal Fluorescent Open Reflector Downlight Wall Washer

Catalog Number **8700**

8700	Finish	Options
	SCL	PF
	SGO	DWW
		CWW

Finish (Factory Standard)

SCL	Specular Clear "Alzak" with White Flange
SGO	Specular Gold "Alzak" with White Flange

Options ▲

PF	High Polished Flange
DWW	Double Wall Washer
CWW	Corner Wall Washer

Features

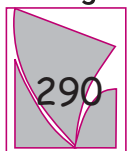
Manufactured and Listed to UL 1598, ETL and CSA standards.
Suitable for Damp Locations
Wet location under covered ceiling



▲ See Options and Finishes pages for a list of additional finishes and equipment.

Vantage reserves the right to change components, finishes or design details in any manner which does not alter the installed appearance or reduce performance and intended function.

Vantage



76 Community Avenue Plainfield, CT 06374
voice (860) 564.4512 fax (860) 564.4854
www.vantageitg.com

06/07

Luminaires

Photometric Information

Product Number: A8HF226E1/8700SCL
Frame In Kit: 8" Horizontal Mount Fluorescent
Reflector: 8" Horizontal Clear "Alzak" Reflector with semi-specular wall wash section
LTL Test Number: 06415/06443
Lamp(s) Source: (2) 26W DTT 4 pin lamps rated at 1800 lumens
Total Luminaire Efficiency: 59.1%
CIE Type: Direct
Luminaire Spacing Criterion: 1.5/1.2/1.8
Luminous Diameter: 7.500

Illumination on the Wall

These calculations are based on five luminaires located three feet from wall, three feet on center. 'Below fixture' values are located directly beneath the center luminaire. 'Between fixture' values are located between center and immediately adjacent luminaires.

DISTANCE FROM CEILING (IN FEET)	BELOW FIXTURE (VERTICAL FC)	BETWEEN FIXTURES (VERTICAL FC)
1	16.6	16.4
2	37.6	37.2
3	45.9	45.2
4	37.3	35.8
5	28.1	26.2
6	21.3	19.7
7	16.1	15.0
8	12.5	11.6
9	9.82	9.17
10	7.81	7.35
11	6.26	5.92
12	5.07	4.81

Coefficients of Utilization

RC	80				70				50				30				10				0
RW	70	50	30	10	70	50	30	10	50	30	10	50	30	10	50	30	10	50	30	10	0
0	70	70	70	70	69	69	69	69	66	66	66	63	63	63	60	60	60	59			
1	66	64	62	60	64	62	60	59	60	58	57	57	56	55	55	54	54	52			
2	61	57	54	51	60	56	53	51	54	52	49	52	50	48	50	49	47	46			
3	57	51	47	44	55	50	47	44	49	46	43	47	45	42	46	44	42	40			
4	52	46	42	38	51	45	41	38	44	40	37	43	39	37	41	39	36	35			
5	48	41	36	33	47	40	36	33	39	35	32	38	35	32	37	34	32	30			
6	44	37	32	28	43	36	32	28	35	31	28	34	31	28	33	30	28	26			
7	40	33	28	25	39	32	28	24	32	27	24	31	27	24	30	27	24	23			
8	37	29	24	21	36	29	24	21	28	24	21	27	24	21	27	23	21	20			
9	34	26	21	18	33	26	21	18	25	21	18	24	21	18	24	20	18	17			
10	31	24	19	16	31	23	19	16	23	18	16	22	18	16	22	18	15	14			

