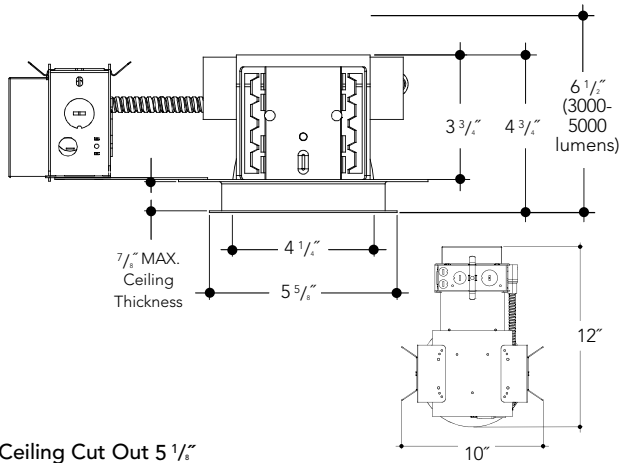


DIMENSIONS



Ceiling Cut Out 5 1/2"

FEATURES

Fortimo LED DLM Flex Systems

New Fortimo LED Downlight Module (DLM) Flex systems now provide the latest advances, including high quality LED options to satisfy both functional and performance requirements along with excellent energy efficiency and color consistency. For practical and general lighting applications, the Fortimo LED DLM Flex Module is an excellent solution.

Its direct white mid-power LED technology combines high light quality and energy efficiency levels over 100 Lm/W, offering superior price/performance along with low maintenance costs and a long lifetime of 50,000 hours. Wide range of lumen packages are available: 1100, 1500, 2000, 3000, 4000 and 5000.

Features and Benefits

- High energy efficiency system up to 107 lm/W.
- Wide range of lumen packages from 1100-5000 lm.
- High quality of light with CRI 80 and 3 SDCM color consistency.
- Philips Xitanium driver features internal thermal protection and 0-10V dimming to 1% of lumen output.
- Input volts 120-277V.
- Minimum 50,000 hours of life at L₇₀ standard.
- Smart systems with Philips Advance Xitanium drivers.
- 5 year warranty on LED module and driver.

Frame

Heavy duty galvanized steel components including frame, adjustable mounting ears and junction box. Fixture is pre-wired and grounded with easy access from below, listed for through branch circuit wiring.

Standard mounting bars (included) incorporate rigid formed cross sections and include joist positioning tabs, integral nails, auxiliary nailholes, T-Bar slots and holes for locking to grid using self-tapping screws (supplied by others). Mounting ears will accept our standard bars (14"-24" ext), optional Caddy #517B (27" ext) and other mounting methods.

Insulation must be kept 3" away from fixture. Listed for damp locations.

REFLECTOR KIT

OPEN - LED - ROUND

LED 4" Aperture

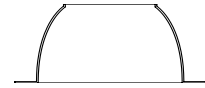
L4060 4" LED Open Round

Finish Options

- SCL Specular Clear "Alzak"
- SGC Soft Glow Clear
- ECL Etch Clear
- WHT White Reflector

Options

- PF Polished Flange



OPEN BAFFLED - LED - ROUND

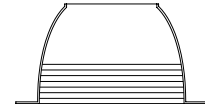
LED 4" Aperture

L4050 4" LED Open Baffled Round

Finish Options

Specify reflector finish option - see above, then add baffle finish color

- BL Black Baffle
- WH White Baffle



WALL WASH - LED - ROUND

LED 4" Aperture

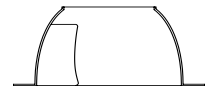
L4160 4" LED Wall Wash Round

Finish Options

- SCL Specular Clear "Alzak"
- SGC Soft Glow Clear
- ECL Etch Clear
- WHT White Reflector

Options

- PF Polished Flange



All trims supplied standard with white painted flange.



Manufactured and Listed to UL 1598, ETL and CSA standards. Suitable for Damp Locations. Wet location under covered ceiling.



ORDERING INFORMATION

EXAMPLE: A4VPLEDSS-1535K-L4060-SCL

Wattage LED	Housing	Lumens	Kelvin	Reflector	Finish	Options
See Chart Below	A4VPLEDSS	-11 = 1100 -15 = 1500 -20 = 2000 -30 = 3000 -40 = 4000 -50 = 5000	27K = 2700K 30K = 3000K 35K = 3500K 40K = 4000K	L4060 Baffled L4050 Wall Wash L4160	SCL SGC ECL WHT Baffle BL WH	EM EMI PF DL-3 DL-2 TDM Shower Light Only AT

Lumens	Wattage*
1100-3K	10.8
1100-4K	10.3
1500-3K	15.1
1500-4K	14.4
2000-3K	20.6
2000-4K	19.6
3000-3K	30.8
3000-4K	29.3
4000-3K	TBD
4000-4K	TBD
5000-3K	52.8
5000-4K	50.2

*Actual Wattage/Lumens may vary.

Options

- AT - Air Tight Rating
- EM - Emergency Battery
- EMI - Emergency Battery w/ Internal Mounted Test Switch
- PF - Polished Flange
- DL-3 - Lutron 3-Wire
- DL-2 - Lutron 2-Wire
- Not available on 5000 Lumen
- TDM - Triac Dimming Driver

Vantage reserves the right to change components, finishes or design details in any manner which does not alter the installed appearance or reduce performance and intended function.

*See LED-DD page for decorative trims options.
▲ See Options pages for other options and finishes.